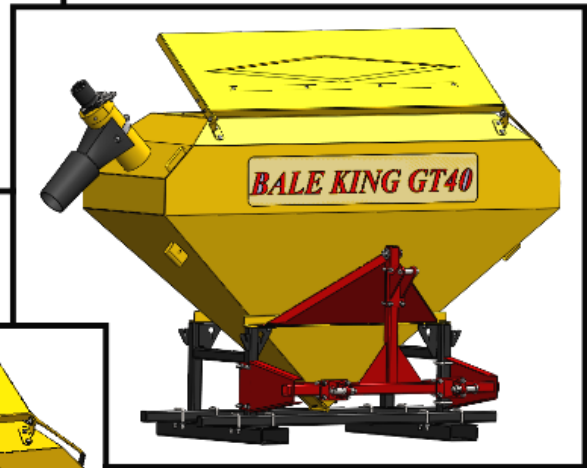
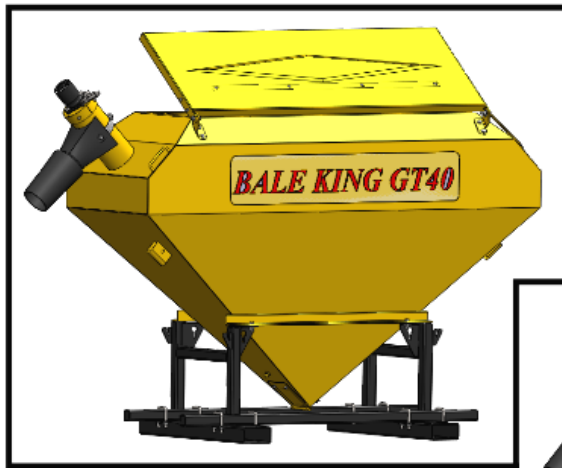




# BRIDGEVIEW



## ***BALE KING GT40***

### ***Grain Feeder***

### ***Operator's & Parts Manual***

Last Update: January 2025





**Your Authorized Dealer:**

**Your Serial Number:**

The Serial Number is located on the tank.



# TABLE OF CONTENTS

<u>INTRODUCTION</u> .....	4
WARRANTY INFORMATION .....	4
SAFETY .....	5
PRECAUTIONS .....	6
SAFETY DECALS: .....	7
GT40:.....	8
GT40 THREE POINT HITCH:.....	9
GT40 TRAILER (HYDRAULIC): .....	9
GT40 TRAILER (ELECTRIC): .....	10
UNIQUE FEATURES.....	12
TIRE INFLATION & RATING .....	13
GRAIN TANK .....	13
HYDRAULIC DRIVEN: .....	15
ELECTRIC DRIVEN:.....	15
BATTERY PACK:.....	15
CHARGING:.....	15
SPECIFICATIONS: .....	16
<u>PARTS</u> .....	17
GRAIN TANK ASSEMBLY: .....	17
AUGER SPOUT AND LID OPENER .....	19
ELECTRIC DRIVE COMPONENTS: .....	21
HYDRAULIC DRIVE COMPONENTS: .....	23
FORK STAND:.....	24
THREE POINT HITCH:.....	25
TRAILER FRAME: .....	27
TRAILER ELECTRIC COMPONENTS: .....	29
STAND ELECTRIC COMPONENTS: .....	30
DECALS:.....	31
<u>HYDRAULIC SCHEMATICS</u> .....	32
<u>ELECTRICAL SCHEMATICS</u> .....	33



## INTRODUCTION

Thank you for purchasing a **Bale King GT40**. With the proper operation and service as outlined in this manual, the Bale King GT40 will provide you with years of trouble free operation.

This is a complete safety, operation and parts manual for the Bale King GT40. The manual covers in detail how to safely and effectively use your new machine. The procedures outlined in this manual should be followed to ensure safe operation and longevity of your machine. The parts manual covers all parts you may need to order in case of accident or breakdown. Please read completely through this manual before beginning operation of your new machine.

## WARRANTY INFORMATION

Bridgeview Manufacturing Inc. provides warranty to the **BALE KING GT40** series to its original owner for a period of one year from the date of purchase.



<b>Normal Farm Use</b>
One year warranty covers parts and labour.

- Warranty covers **defects** in material and workmanship.
- Warranty **does not** cover damage to the machine and its components if the operator does not follow the operating instructions in the operator's manual.
- Warranty **does not** cover normal wear and tear.
- Warranty will be **VOID** and Bridgeview Manufacturing Inc. is not liable in any way if the Bale King GT40 is used for any purpose other than its intended use.
- Tire warranty is covered by the **Tire Manufacturer**

All warranty service must be handled through an authorized Bale King dealer. Any repairs after the warranty period are the owner's responsibility. Any **overtime** requested by the owner to have the machine repaired during the warranty period will be the owner's responsibility. Warranty is at the dealership and **no** travel time will be reimbursed. Freight costs associated with warranty repairs are not reimbursable. Warranty does not cover downtime. Warranty will be **VOID** if any component is altered or modified in any way, unless written permission is given by Bridgeview Manufacturing.

**NOTE:** *Bridgeview Manufacturing Inc. reserves the right to make changes or improvements at any time without notice or obligation.*



## SAFETY



**ATTENTION! STAY ALERT! THE SAFETY OF YOU AND OTHERS IS INVOLVED!**

### Signal Words:



**DANGER** indicates an imminently hazardous situation, which if not avoided will result in death or serious injury.

**WARNING** indicates a potentially hazardous situation, which if not avoided could result in death or serious injury.

**CAUTION** indicates a potential hazardous situation exists, which if not avoided may result in minor or moderate injury.

**NOTICE** indicates a property damage message.

**IMPORTANT** indicates critical information to be aware of.

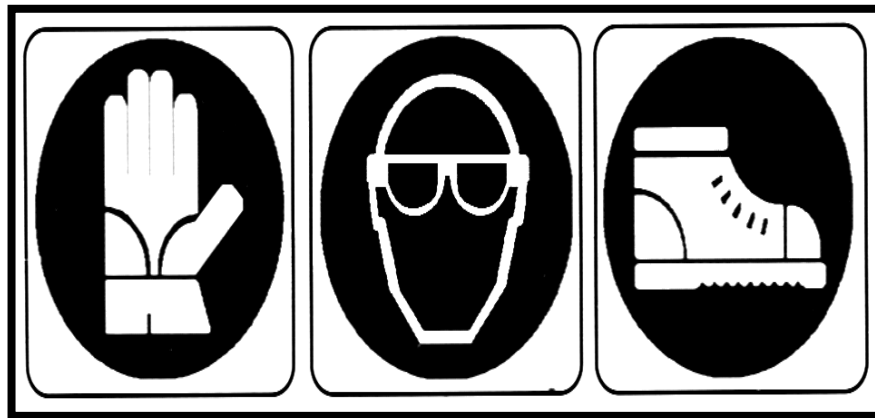


## PRECAUTIONS

The following safety precautions **MUST** be followed to ensure safe operation of the Bale King GT40.

- **ALWAYS** turn **OFF** the **SELF-PROPELLED VEHICLE** when leaving the operating platform.
- **DO NOT** enter the tank while in operation.
- **DO NOT** clean tank while in operation.
- **DO NOT** stick any device into the tank to clear debris while the machine is in operation.
- **ALWAYS** turn off the machine when cleaning, or hooking/unhooking the machine.

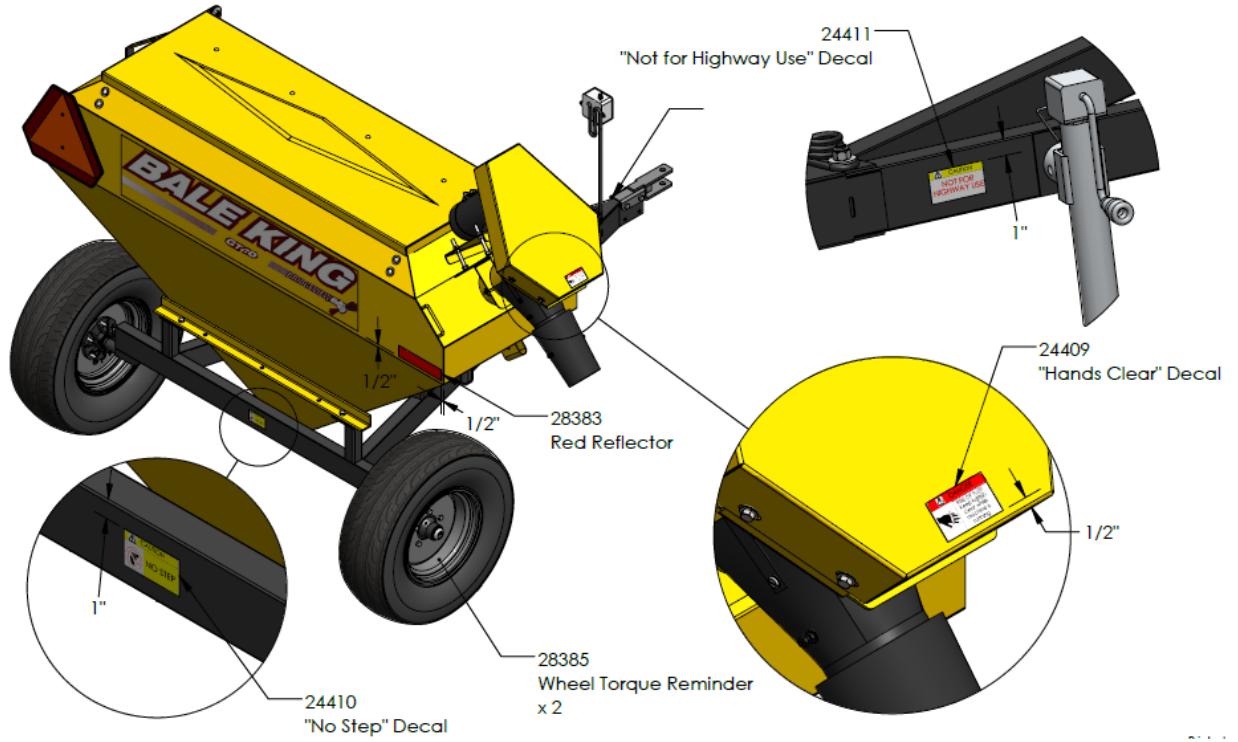
**BEFORE ATTEMPTING ANY REPAIR PROCEDURES,  
ALWAYS USE APPROPRIATE EQUIPMENT SUCH AS  
SAFETY GLASSES, SAFETY SHOES & GLOVES**





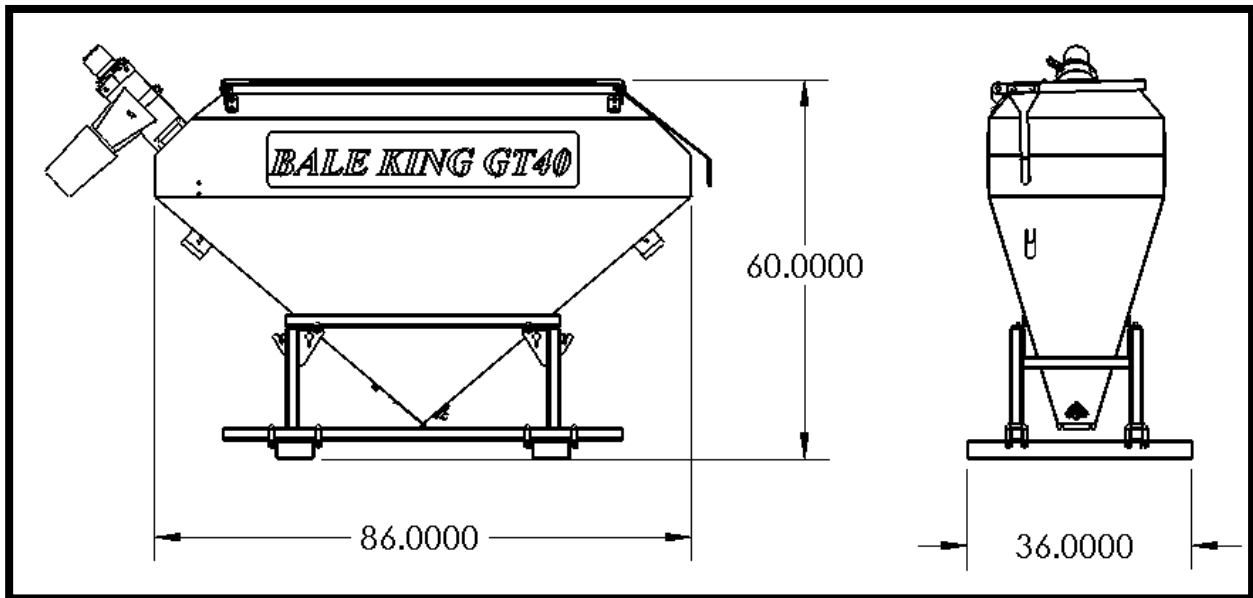
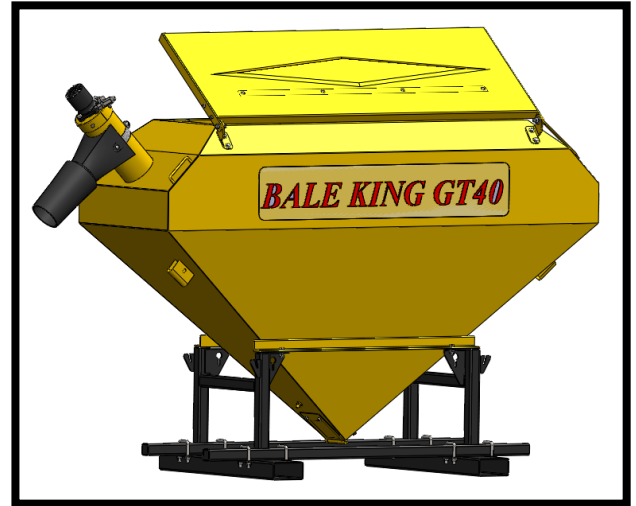
**SAFETY DECALS:**

GT40  
Trailer Decals





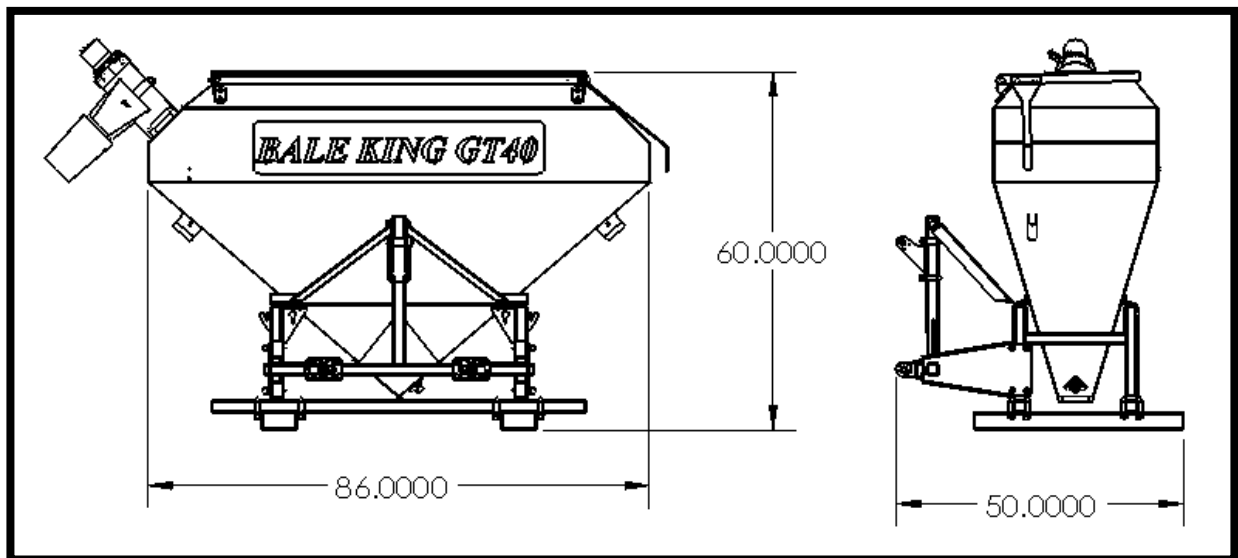
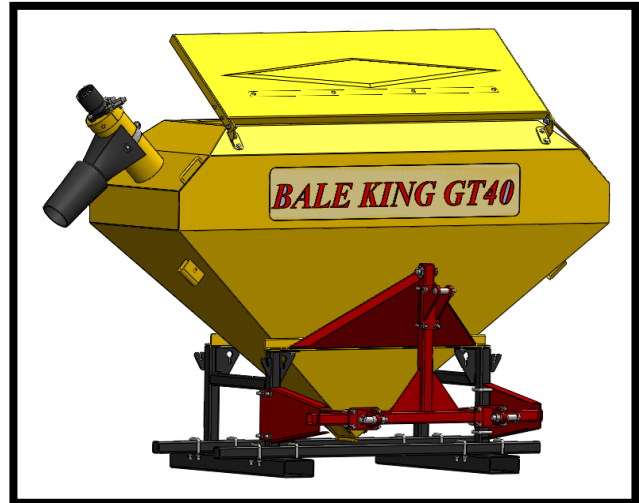
**GT40:**





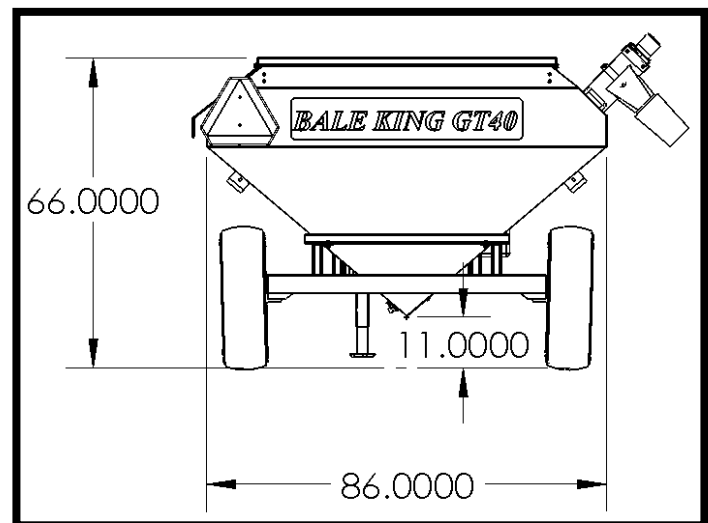
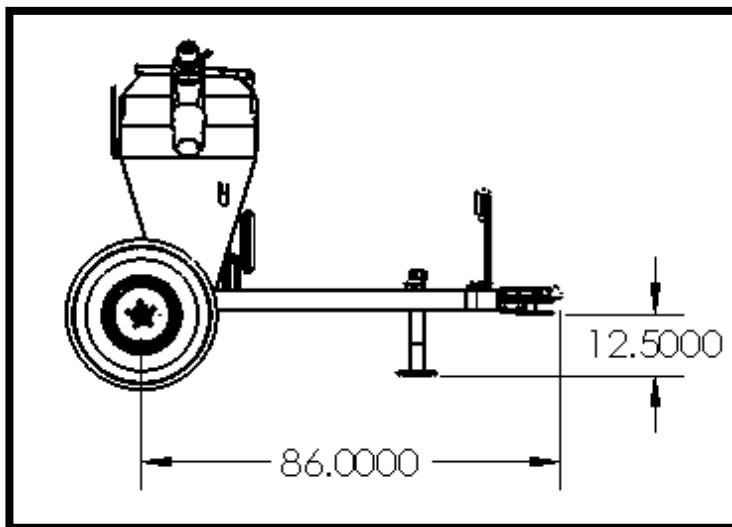


**GT40 Three Point Hitch:**



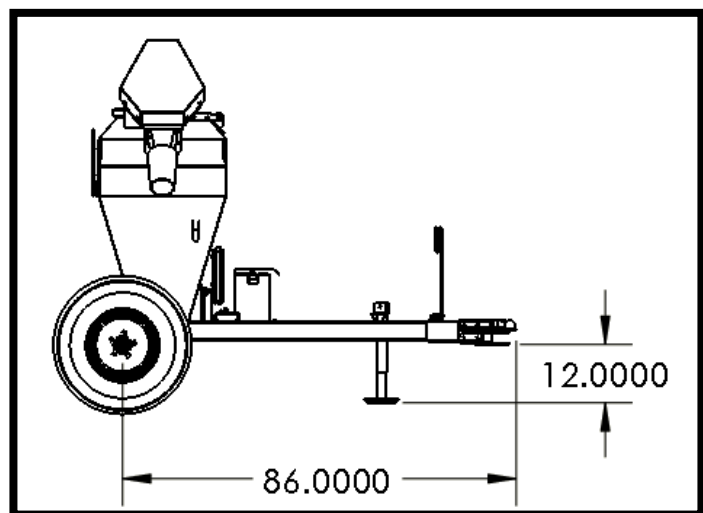
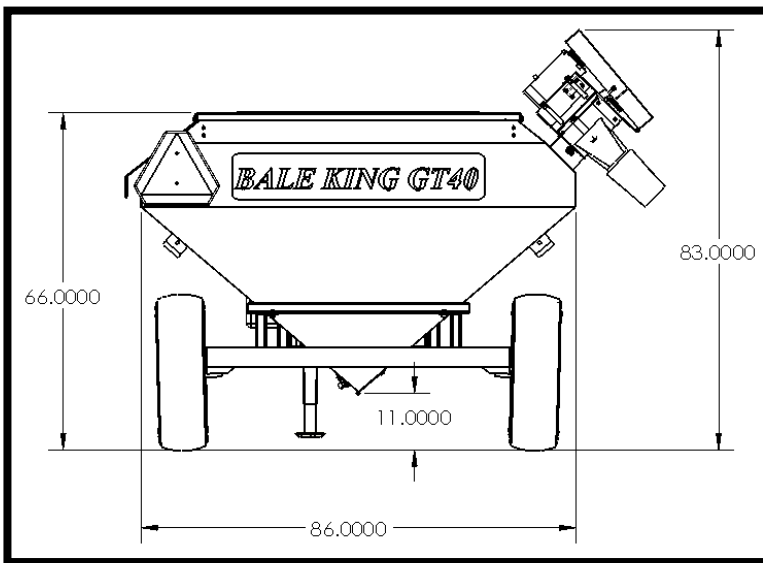
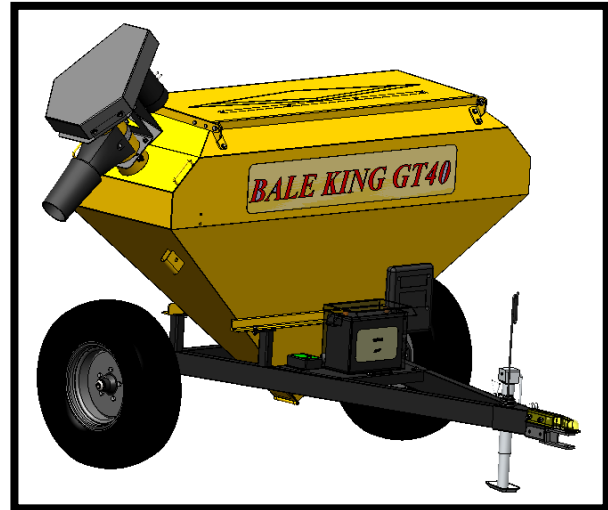


**GT40 Trailer (Hydraulic):**





**GT40 Trailer (Electric):**





## UNIQUE FEATURES

- ❖ Sturdy 12 gauge steel construction for added strength.
- ❖ Rugged foundation frame for better structural integrity.
- ❖ Largest lid opening in its class.
- ❖ Opening is handled by our easy gas shock assisted mechanism.
- ❖ Weather proof and rodent proof.
- ❖ Easy grain flow with steep angled tank.
- ❖ Hydraulic or 12V Electric power unit.
- ❖ Powder coat paint
- ❖ Handy bottom cleanout gate
- ❖ Compatible with Front end loader, Truck, side by side, Tractor etc.
- ❖ Shock proof battery box
- ❖ On board Charger for charging battery
- ❖ Circuit breaker protection
- ❖ 40 bushel tank capacity
- ❖ 30 ft long control cord for dispensing feed
- ❖ Group 27 deep cycle battery



## TIRE INFLATION & RATING

Check for proper tire inflation	<b>35 PSI</b>
Replace any damaged tires	<b>P215/70 R15</b>
Check and tighten wheel bolts on a regular basis	<b>90 ft-lb</b>



# CAUTION

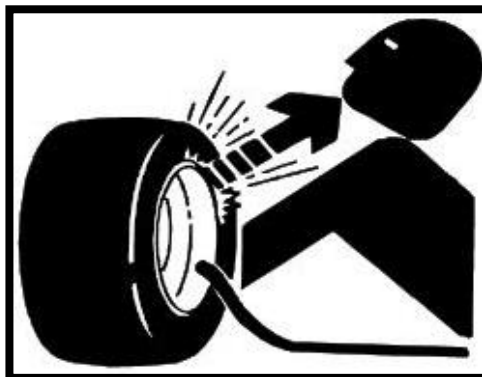
DO Not Exceed 40 Km/h (25 MPH).  
*BALE KING* uses implement tires & hubs. Transporting this machine at higher speeds is unsafe.



- Proper tire inflation will help alleviate a puncture problem when pulling and operating the machine on rough terrain.
- Maximum speed for agricultural tires is 25 mph or 40 km/h.
- The Bale King GT40 trailer is provided with 1800 lb wheel hubs for better load safety.

**NOTE:** *Warranty does not cover damaged rims and hubs due to loose wheel bolts. Tire warranty is covered by the tire manufacturer.*

**NOTE:** *When inflating tires, use a clip-on chuck and extension hose long enough to allow you to stand to one side and NOT in front of or over the tire assembly.*





## GRAIN TANK

Grain tank capacity is approximately 40 bushels. A *hydraulic or 12V electric* driven auger elevates the grain and drops it in a pile, windrow or bunk.

A door is provided at the bottom of the tank for clean out if required.

The tank is filled through the lid at the top.



**LID NOTE:** *Make sure the lid opening is facing backward to prevent it from opening while transporting the GT40 Tank/Trailer.*

**WARNING:** *Watch your fingers while closing lid.*



### HYDRAULIC DRIVEN:

The Bale King GT40 is provided with a set of hydraulic hoses to operate the grain tank auger. The hydraulic schematic is provided at the end of this manual.

### ELECTRIC DRIVEN:

The machine is equipped with a 12V (DC) electric motor.

**NOTE:** *Electric motor warranty is covered by the manufacturer.*

### BATTERY PACK:

The bale king GT40 is powered by a 12V deep cycle battery.

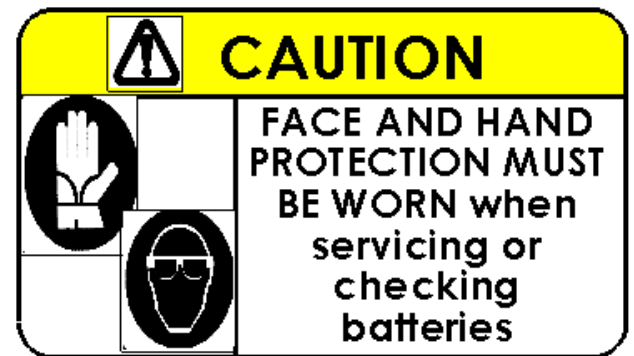
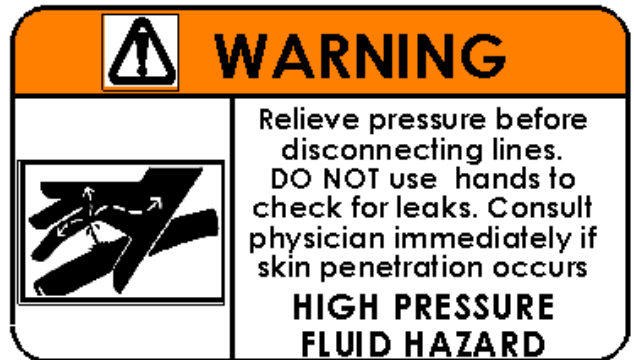
**WARNING:** *Risk of explosive gasses*

*Working in vicinity of a lead-acid battery is dangerous. Batteries generate explosive gasses during normal battery operating.*

### CHARGING:

The bale king GT40 is provided with an automatic charging and battery status monitoring system. It is completely automatic and may be left connected to both AC power and to the battery that it is charging for a long period of time. However, it is prudent to periodically check both the battery and the charger for normal operation during these extended charging periods.

Read and understand the provided manual before using the battery charger.





**SPECIFICATIONS:**

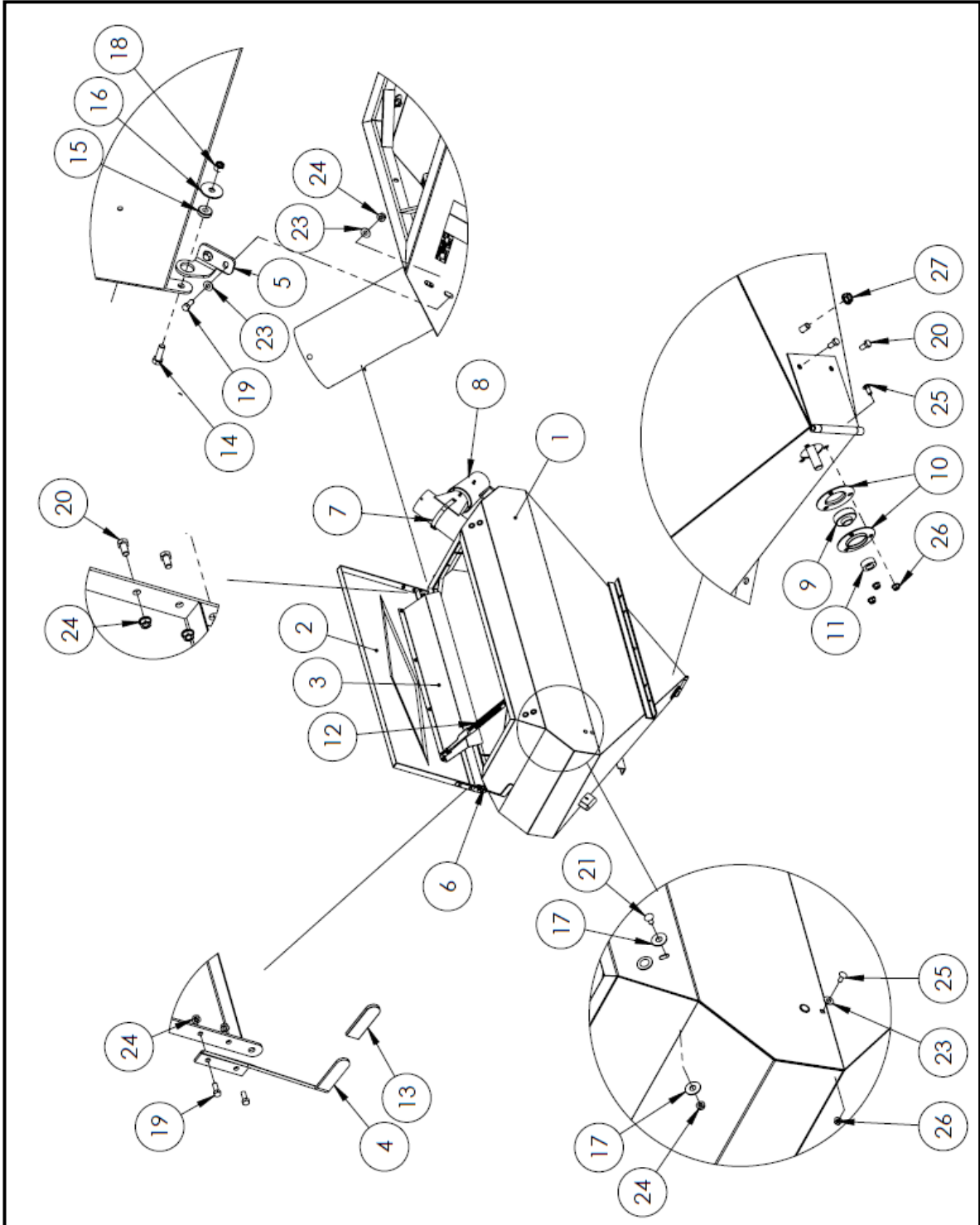
<b>SPECS</b>	<b>GT40 Pallet Fork</b>	<b>GT40 3-Point Hitch</b>	<b>GT40 Trailer</b>
Mount	Front End Loader Forks	Tractor	Tractor, Truck
Approx Capacity	40 Bushel		
Bottom Cone Angle	50°		
Empty Weight (lb)	650 (H) / 800 (E)	700 (H) / 850 (E)	770 (H) / 850 (E)
Dimensions (WxHxL)	86x60x36	86x60x48	86x66x86
Drive	Hydraulic or Electric Driven		
Jack	----	----	5000lb
Lid	Ground Operated, Full Opening, Gas Shock Assisted		
Construction	12 gauge Material		
Hitch	----	----	Optional (Ball/Clevis)
Flow Rate	Do Not Exceed 14 gpm		
Pressure	Do Not Exceed 1800 psi		
Auger	6" Auger		
Tires	----	----	P215/70 R15 Tire & Rim(AG)
Clean Out Door	Bottom of Tank		
Finish	Powder Coat		
Safety Chain	Yes		----
Unload Time	2.5 Min		





# PARTS

## Grain Tank Assembly:

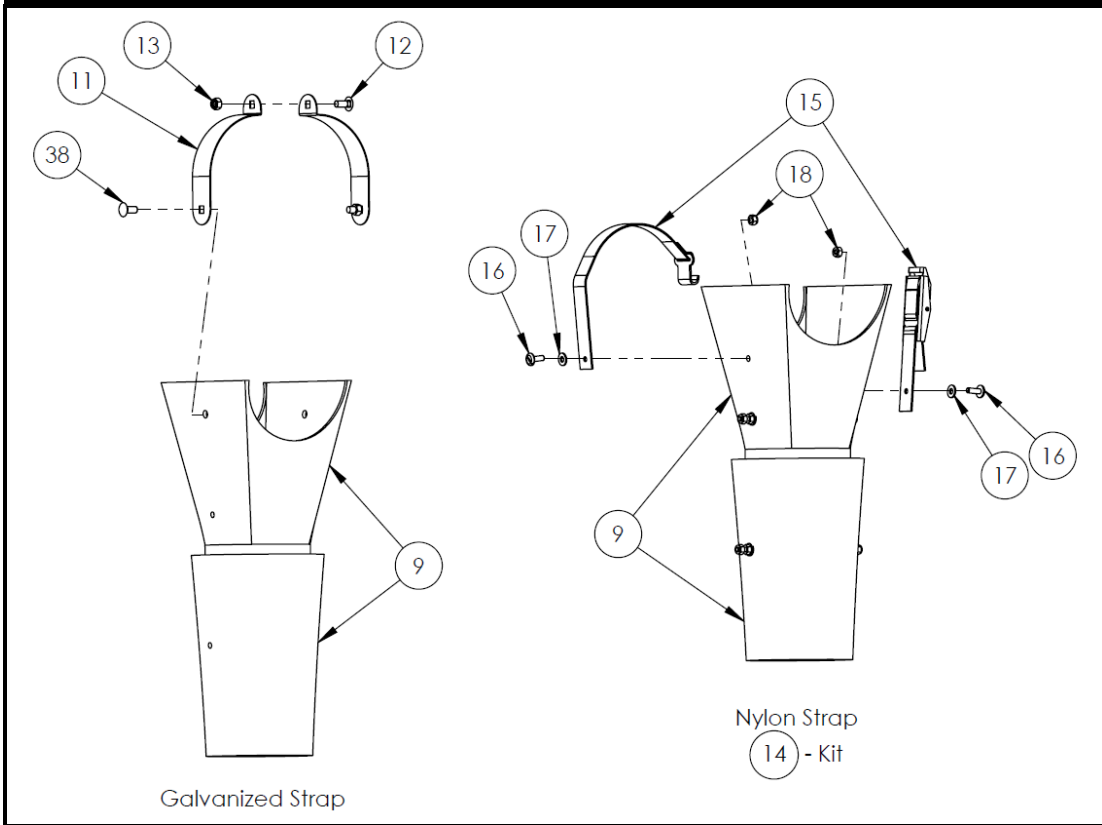
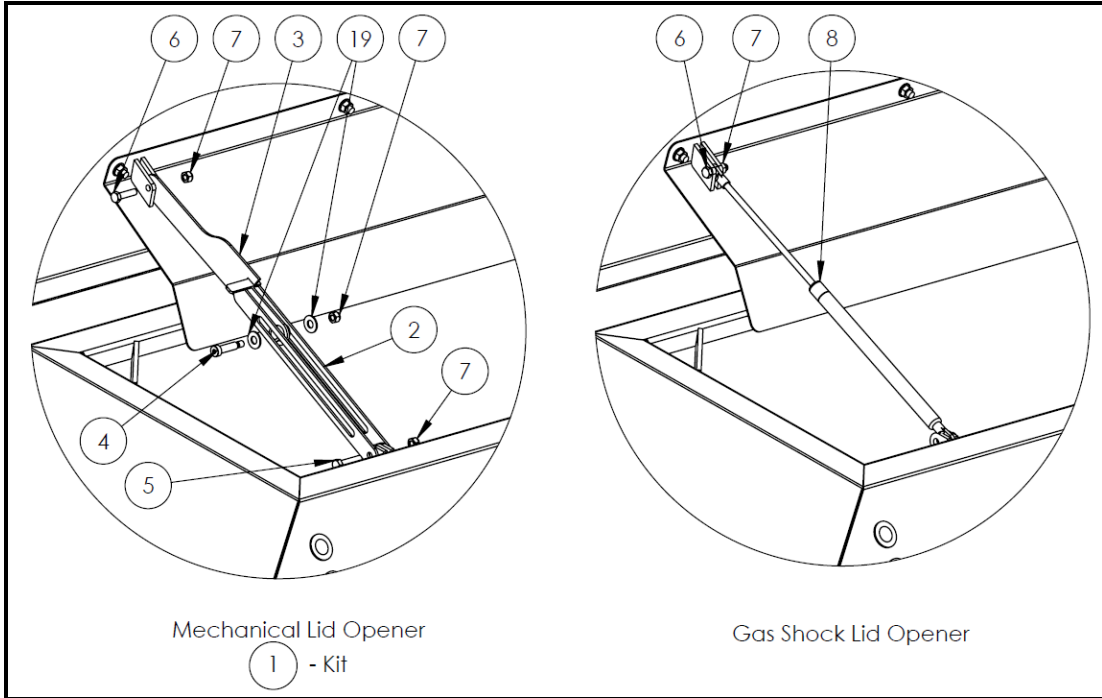




ITEM NO	DESCRIPTION	ID NO	QTY
1	Grain Tank	22714	1
2	Grain Tank Lid	22713	1
3	Grain Tank Lid Baffle	22707	1
4	Grain Tank Lid Handle	22711	1
5	GT Lid Right Hinge	22709	1
6	GT Lid Left Hinge	22708	1
7	<i>See breakdown</i>		
8	<i>See breakdown</i>		
9	Bearing	10366	1
10	Bearing Flange	10368	2
11	Bearing Lock Collar	10367	1
12	<i>See breakdown</i>		
13	Rubber Handle	10297	1
14	Bolt, 1/2 x 1-1/2"	10174	2
15	Bushing, 1/2 ID x 1-1/4" OD	10239	2
16	Fender Washer, 1/2"	10238	2
17	Flat Washer, 1/2"	11668	8
18	Nut, 1/2" Nylon Lock	10241	2
19	Bolt, 3/8 x 1"	13806	6
20	Bolt, 3/8 x 3/4"	11816	4
21	Carriage Bolt, 3/8 x 3/4"	14072	4
22	Fin Bolt, 3/8 x 3/4"	10807	4
23	Flat Washer, 3/8"	11667	12
24	Nut, 3/8" Serrated Flange	10271	16
25	Carriage Bolt, 5/16 x 3/4"	11662	7
26	Nut, 5/16" Serrated Flange	11814	7
27	Nut, 1/2" Serrated Flange	10273	1



## Auger Spout and Lid Opener

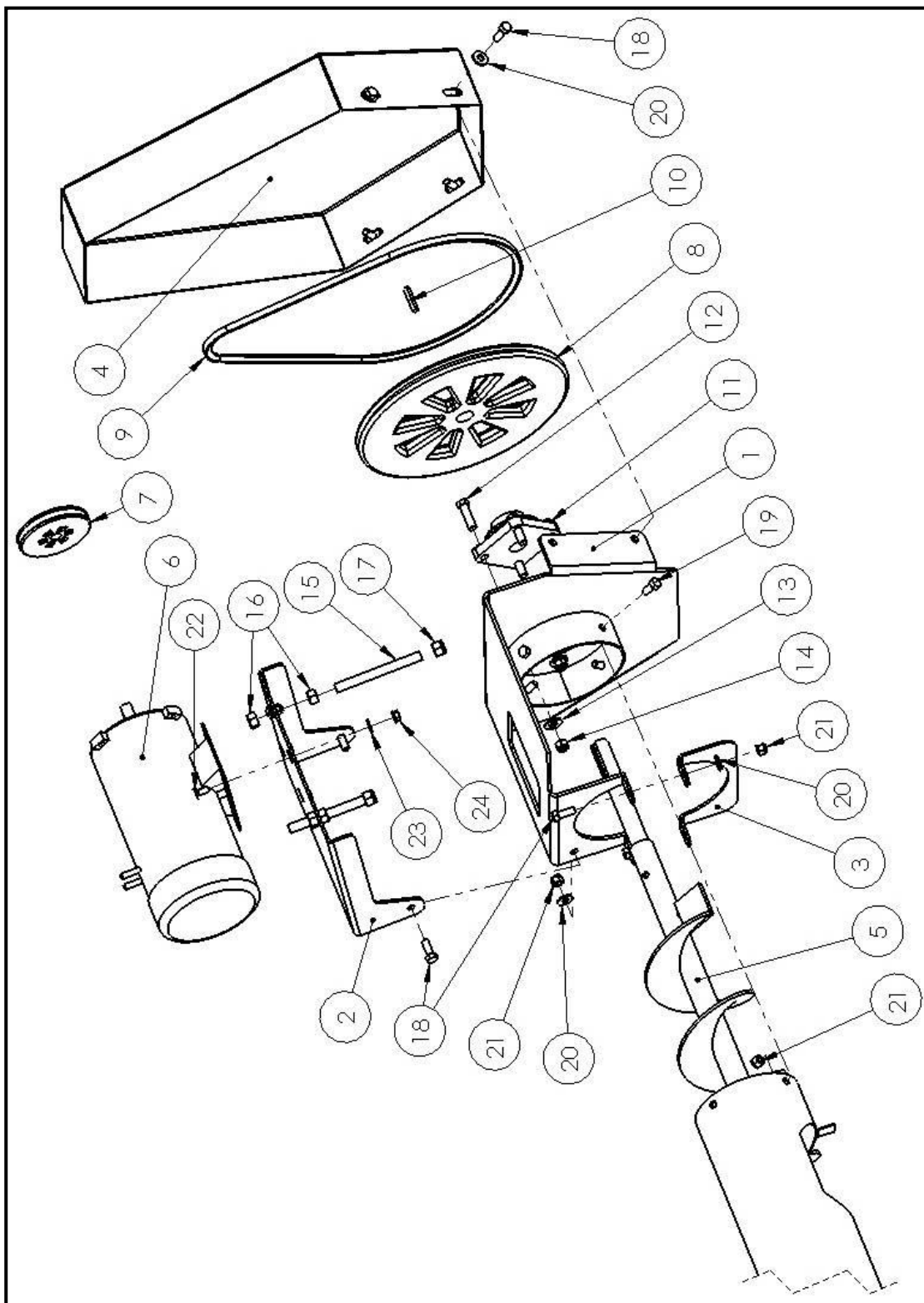




ITEM NO	DESCRIPTION	ID NO	QTY
1	Mechanical Lid Opener Kit *(Includes 2-7)	31149	1
2	Lid Linkage Bottom	31146	1
3	Lid Linkage Top	31229	1
4	3/8" Shoulder Bolt	31103	1
5	5/16 x 1-1/2" Bolt	22618	1
6	5/16 x 1-1/4" Bolt	24418	1
7	5/16" Nylon Lock Nut	11815	3
8	Gas Shock Lid Opener	16808	1
9	Auger Spout	10543	1
11	Galvanized Strap	11307	2
12	5/16 x 3/4" Carriage Bolt	11662	3
13	5/16" Nylon Lock Nut	11815	3
14	Nylon Strap Kit	32038	1
15	Nylon Strap (2-piece)	25122	1
16	1/4 x 3/4" Truss Head Bolt	17638	2
17	1/4" Flat Washer	11666	2
18	1/4" Nylon Lock Nut	11664	2
19	3/8" Flat Washer	11667	2



## Electric Drive Components:

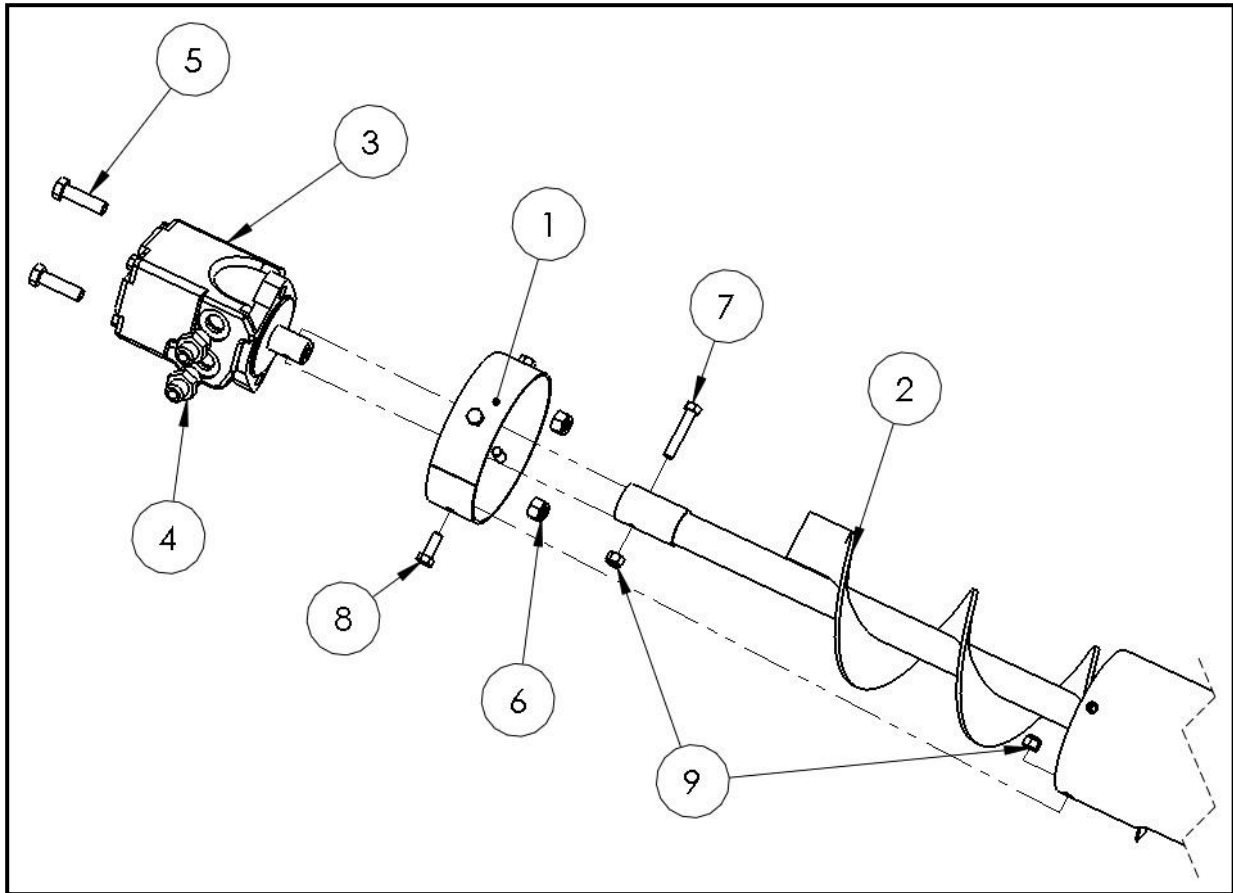




ITEM NO	DESCRIPTION	ID NO	QTY
1	Motor Base Plate	24395	1
2	Motor Pivot Plate	24396	1
3	Motor Base Plate Clamp	24394	1
4	Belt Guard	24393	1
5	6" Auger (Electric Drive)	24404	1
6	Electric Motor	24037	1
7	Drive Sheave Bushing	24030 24031	1 1
8	Driven Sheave Bushing	24032 24033	1 1
9	Belt, A46	24034	1
10	Key, 1/4 x 1/4 x 1-1/2"	21005	1
11	Bearing Housing Bearing	24043 24042	1 1
12	Bolt, 7/16 x 1-1/2"	12381	4
13	Flat Washer, 7/16"	18988	4
14	Nut, 7/16" Nylon Lock	10799	4
15	Threaded Rod	24399	2
16	Nut, 1/2"	10177	4
17	Nut, 1/2" Nylon Lock	10241	2
18	Bolt, 3/8 x 1"	13806	8
19	Bolt, 3/8 x 3/4"	11816	4
20	Flat Washer, 3/8"	11667	8
21	Nut, 3/8" Nylon Lock	10806	8
22	Carriage Bolt, 5/16 x 3/4"	11662	4
23	Flat Washer, 5/16"	12496	4
24	Nut, 5/16" Nylon Lock	11815	4



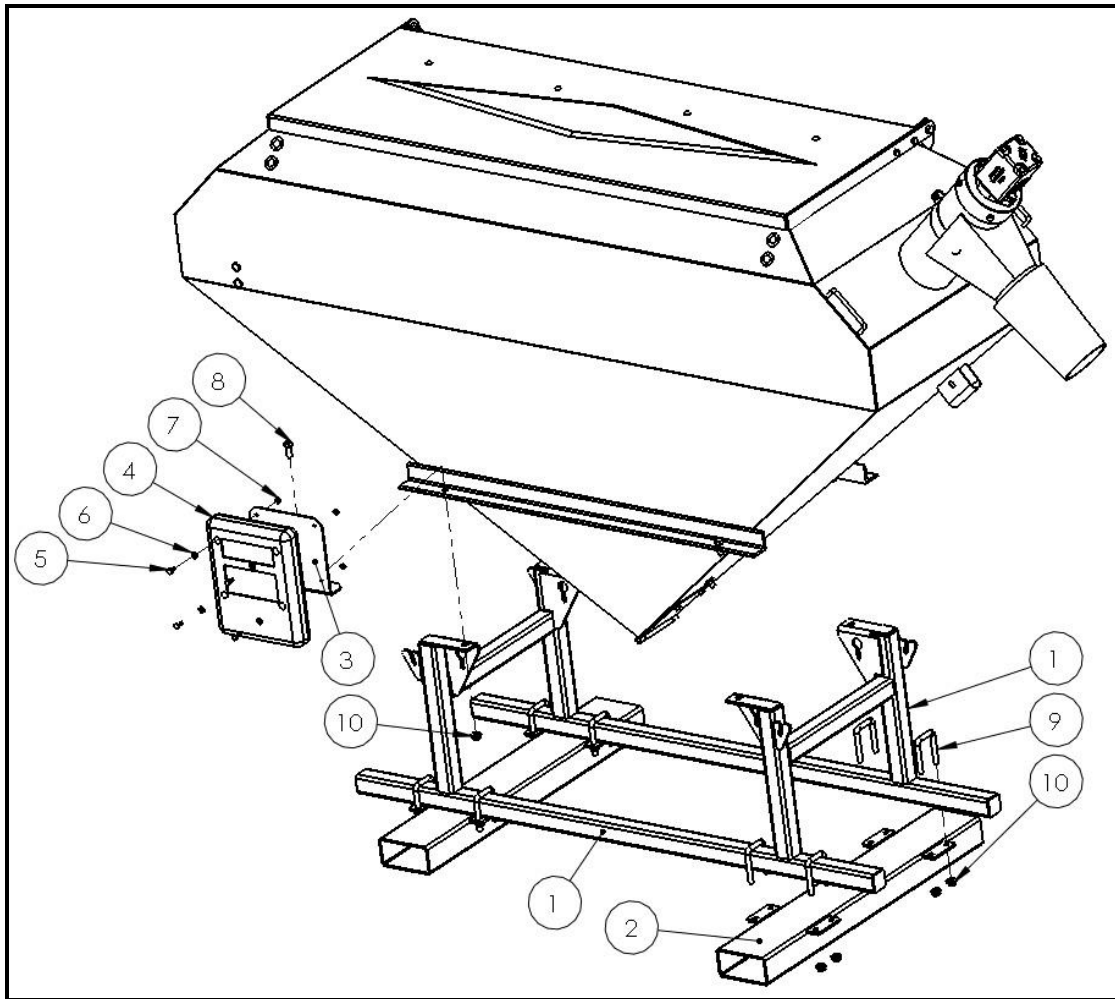
## Hydraulic Drive Components:



ITEM NO	DESCRIPTION	ID NO	QTY
1	Motor Mount Collar	22710	1
2	6 Inch Auger, Hydraulic Drive	13427	1
3	Hydraulic Motor	10533	1
4	Hydraulic Fitting, 10MB-8MJ	10161	2
5	Bolt, 1/2 x 1-3/4"	10805	2
6	1/2" Nylon Nut	10241	2
7	Bolt, 3/8 x 2"	10279	1
8	Bolt, 3/8 x 3/4"	11816	4
9	3/8" Nylon Nut	10806	5



**Fork Stand:**

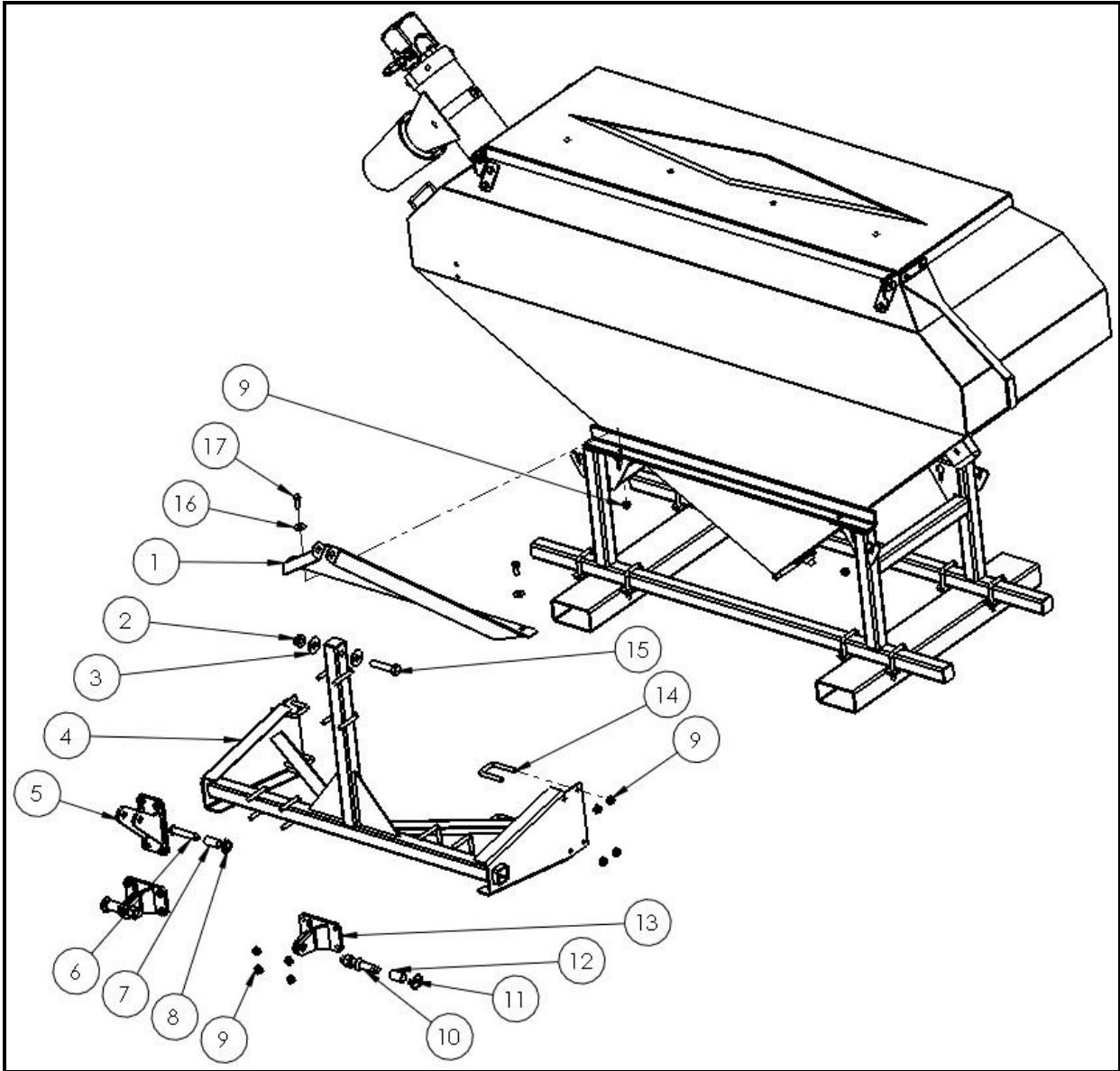


ITEM NO	DESCRIPTION	ID NO	QTY
1	Grain Feeder Tank Stand	22789	1
2	Grain Feeder Tank Fork Slider	22799	2
3	Manual Holder Bracket	24391	1
4	Manual Holder	22409	1
5	Bolt, 1/4 x 3/4"	11809	4
6	Flat Washer, 1/4"	11666	4
7	Nut, 1/4" Nylon Lock	11664	4
8	1/2 x 1-1/4" Bolt	10240	4
9	U-Bolt, 1/2 x 2 x 3-1/4"	23590	8
10	Nut, 1/2" Serrated Flange	10273	20
-	Chain, 1/4 x 40"	14636	2





### Three Point Hitch:

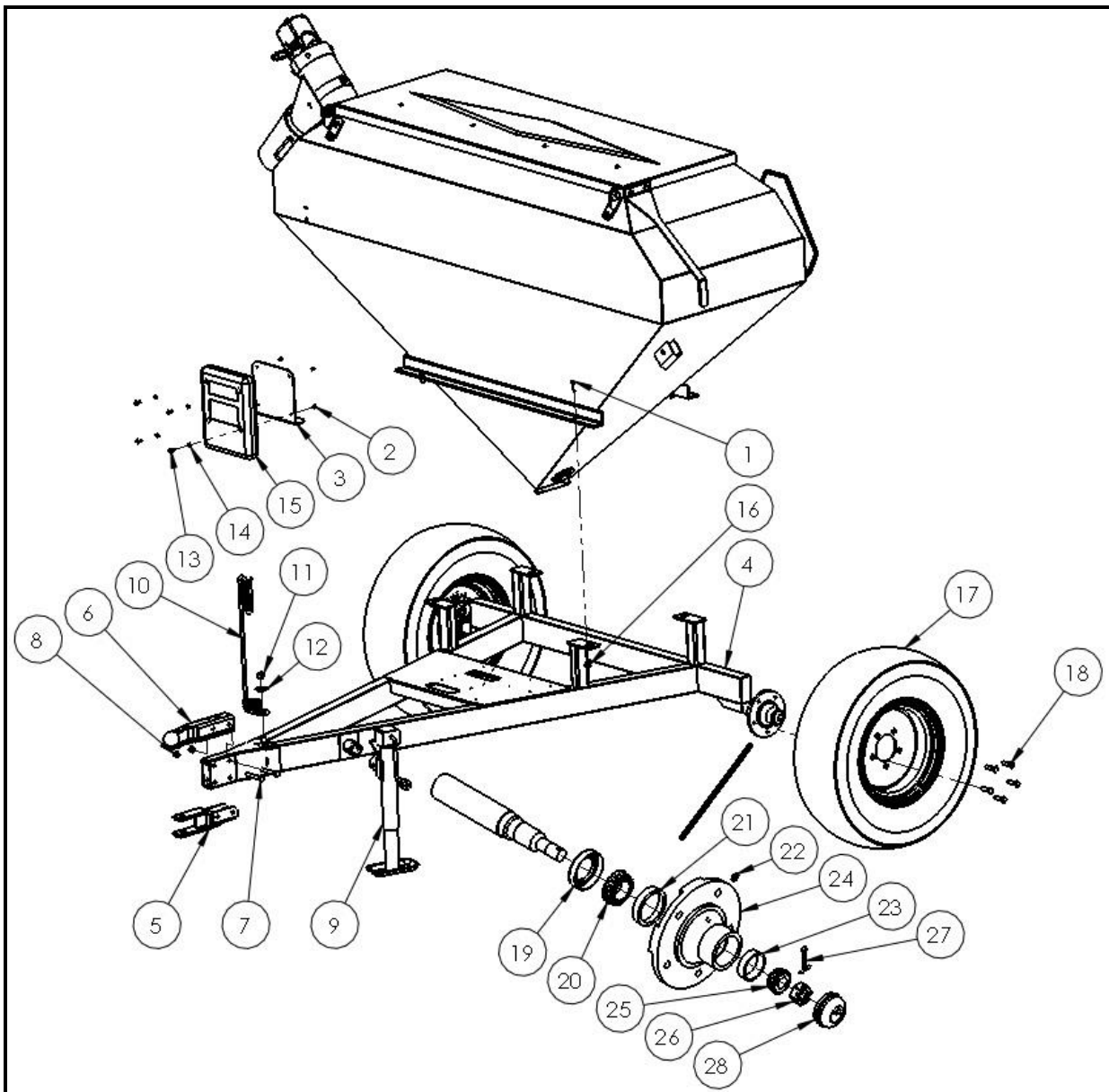




ITEM NO	DESCRIPTION	ID NO	QTY
1	Upper Mounting Bracket	22816	1
2	Nut, 3/4" Serrated Flange	16076	1
3	Flat Washer, 3/4"	13717	2
4	Three Point Hitch Frame	24369	1
5	Three Point Hitch Upper Clevis	24371	1
6	Pin, 3/4 x 3"	23613	1
7	Bushing, 1 OD x 3/4 ID x 1-15/16" L	23612	1
8	Lynch Pin, 3/16"x1 1/4"	13233	1
9	Nut, 1/2 Serrated Flange	10273	24
10	Pin, 7/8" x 1-3/4"	23609	2
11	Lynch Pin, 3/8" x 1-1/4"	23611	2
12	Bushing, 1-1/8 OD x 7/8 ID x 1-3/4" L	23610	2
13	Three Point Hitch Bottom Clevis	24370	2
14	U-Bolt, 1/2 x 2 x 3-1/4"	23590	10
15	Bolt, 3/4 x 3-1/2"	13757	1
16	Flat Washer, 1/2"	11668	2
17	Bolt, 1/2 x 1-1/4"	10240	4



## Trailer Frame:

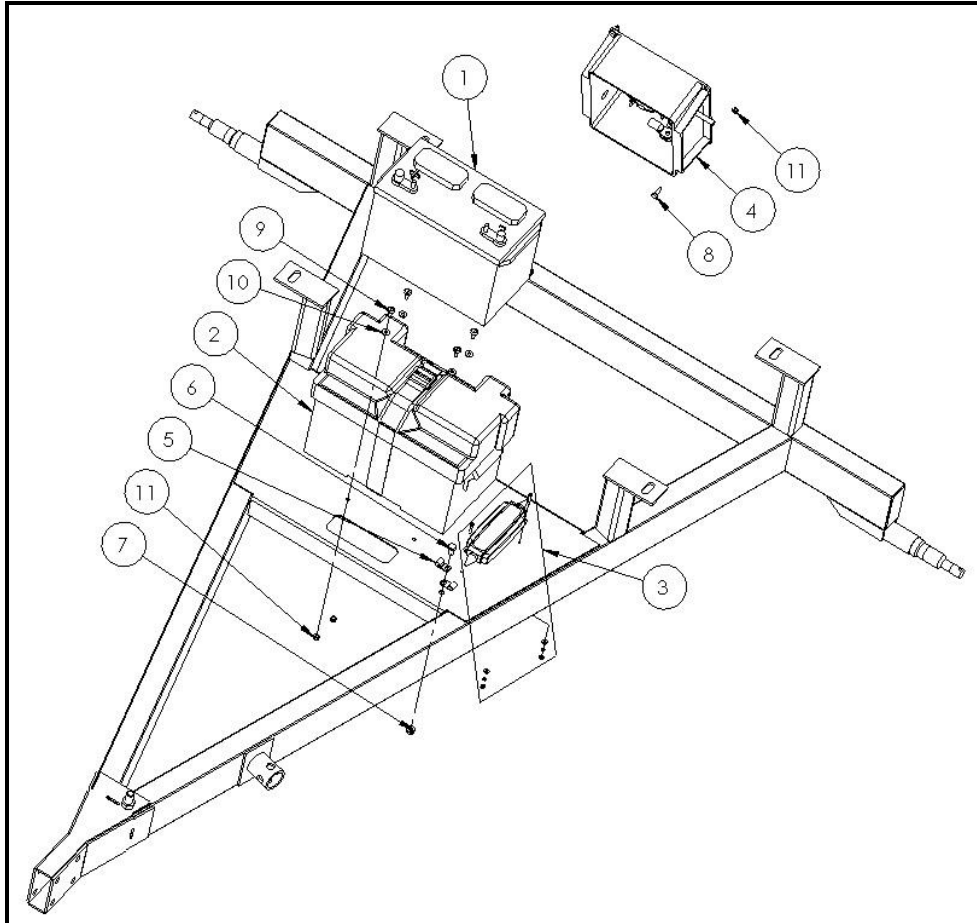




ITEM NO	DESCRIPTION	ID NO	QTY
1	1/2"x1 1/4" Bolt	10240	4
2	1/4" Nylon Lock Nut	11664	4
3	Manual bracket	24391	1
4	Main V Frame	24401	1
5	Clevis Hitch	24402	1
6	Trailer Coupler 2" Ball Class 2	21783	1
7	1/2"x3 1/4" Bolt	15403	2
8	1/2" Nylon Lock Nut	10241	2
9	Side Wind Jack	18034	1
10	Spring Hose Holder (Straight)	17967	1
11	5/8" Nylon Lock Nut	10364	1
12	5/8" Flat Washer	13975	1
13	1/4"x3/4" Bolt	11809	4
14	1/4" Flat Washer	11666	4
15	Operator's Manual Box	22409	1
16	1/2" Serrated Flange Nut	10273	4
17	Tire & Rim	-	2
18	1/2"x1-3/4" Wheel Stud Bolt	16307	10
19	Seal SE11	16306	1
20	Inner Bearing LM67048	10082	1
21	Inner Bearing Cup LM67010	10083	1
22	Grease Zerk	16364	1
23	Outer Bearing Cup LM11910	16304	1
24	Hub * Includes zerk and bearing cups	16724	1
25	Outer Bearing LM11949	16305	1
26	Castle Nut	16358	1
27	Cotter Pin	11669	1
28	Dust Cap	16308	1



## Trailer Electric Components:

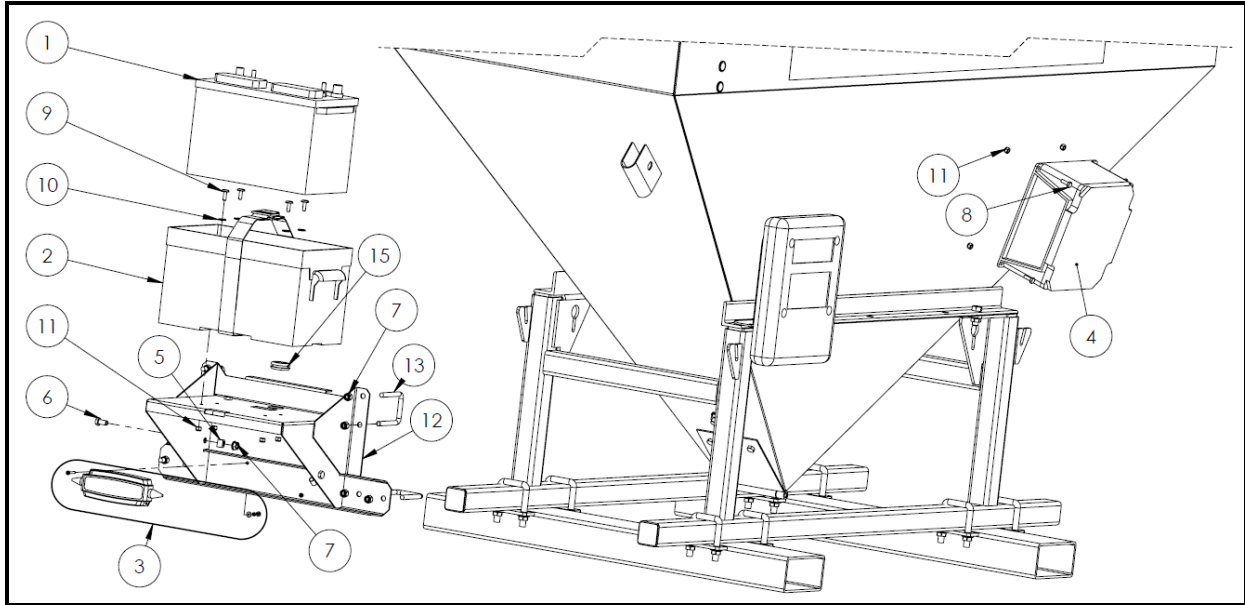


ITEM NO	DESCRIPTION	ID NO	QTY
1	Battery, 12VDC, Group 27 Deep Cycle	24036	1
2	Battery Box	24038	1
3	Battery Charger with Hardware *	24041	1
4	Junction Box	27330	1
5	Wire Clamp	13629	2
6	3/8 x 3/4" Bolt	11816	1
7	3/8" Serrated Flange Nut	10271	1
8	1/4 x 3/4" Bolt	11809	4
9	1/4 x 3/4" Truss-head Bolt	17638	4
10	1/4" Flat Washer	11666	4
11	1/4" Nylon Lock Nut	11664	8

\* NOTE: Deltran chargers use #10 hardware, CTEK chargers use #8 hardware. All replacement chargers will be shipped with appropriate mounting hardware.



## Stand Electric Components:

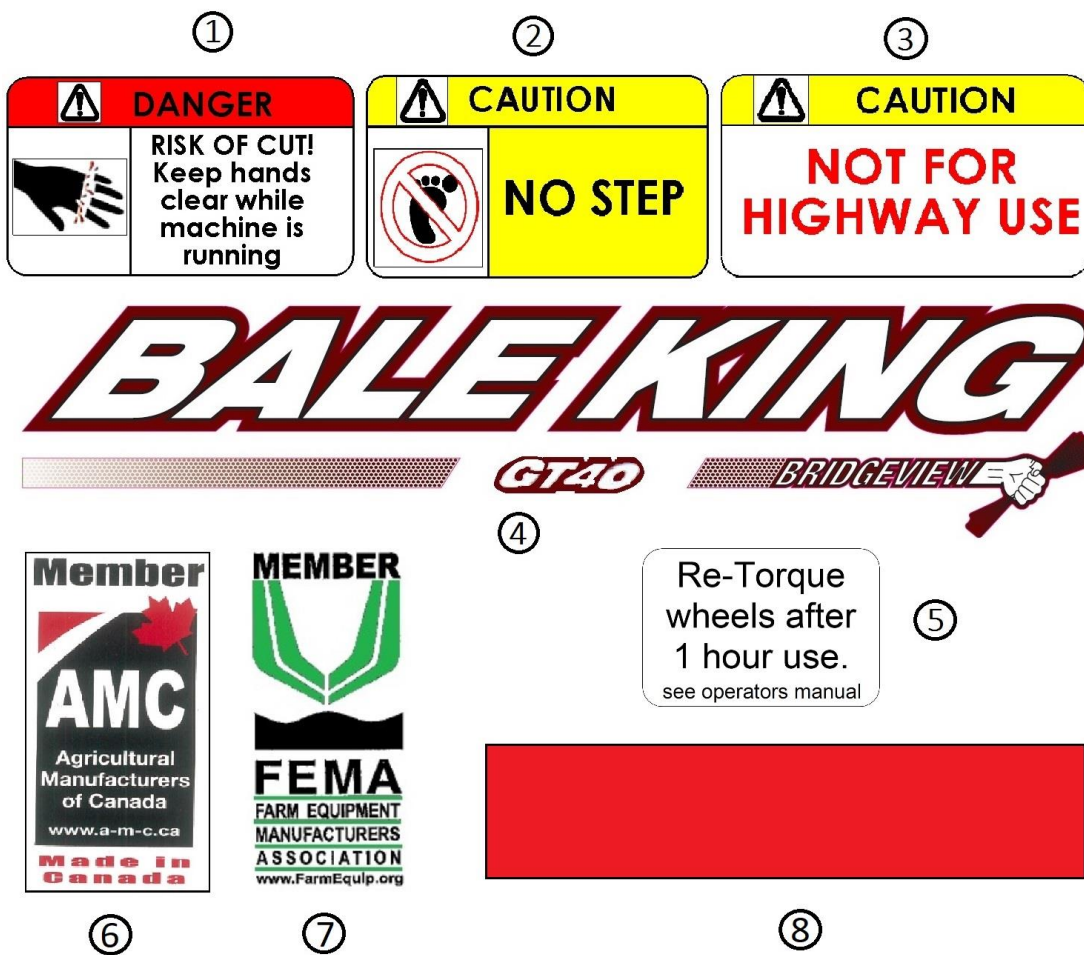


ITEM NO	DESCRIPTION	ID NO	QTY
1	Battery, 12VDC, Group 27 Deep Cycle	24036	1
2	Battery Box	24038	1
3	Battery Charger with Hardware *	24041	1
4	Junction Box	27330	1
5	Wire Clamp	13629	3
6	3/8 x 3/4" Bolt	11816	3
7	3/8" Serrated Flange Nut	10271	3
8	1/4 x 3/4" Bolt	11809	4
9	1/4 x 3/4" Truss-head Bolt	17638	4
10	1/4" Flat Washer	11666	4
11	1/4" Nylon Lock Nut	11664	8
12	Battery Stand	31028	1
13	3/8 x 2 x 3" U-bolt	21459	4
14	Grommet	20655	1

\* NOTE: Deltran chargers use #10 hardware, CTEK chargers use #8 hardware. All replacement chargers will be shipped with appropriate mounting hardware.



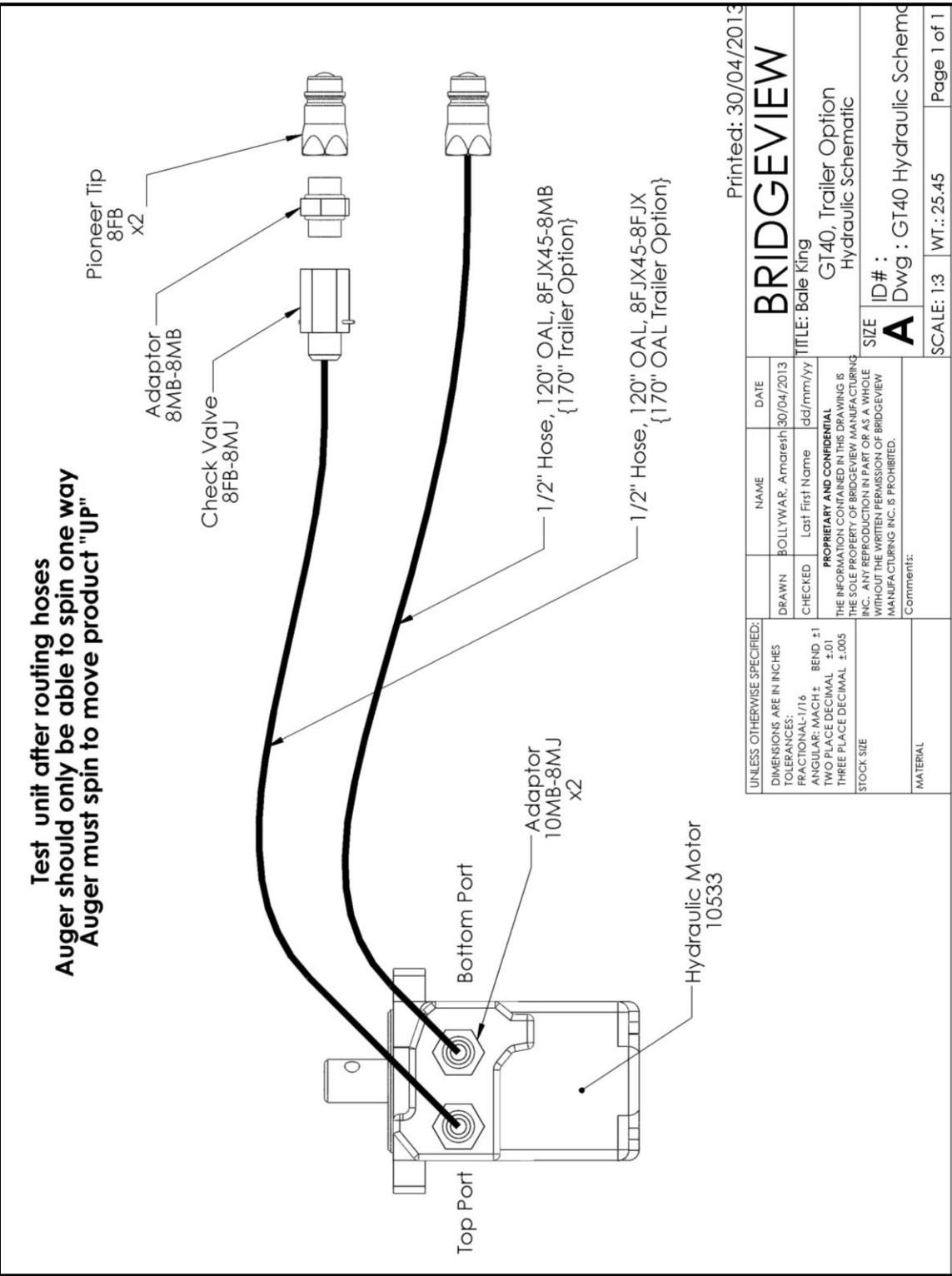
**Decals:**



ITEM NO	DESCRIPTION	ID NO	QTY
1	Decal, "Hands Clear"	24409	1
2	Decal, "No Step"	24410	1
3	Decal, "Not for Highway Use"	24411	1
4	Decal, "Bale King GT40"	23532	2
5	Wheel Torque Reminder	28385	2
6	Decal, AMC	12239	1
7	Decal, FEMA	25347	1
8	Red Reflector	28383	1



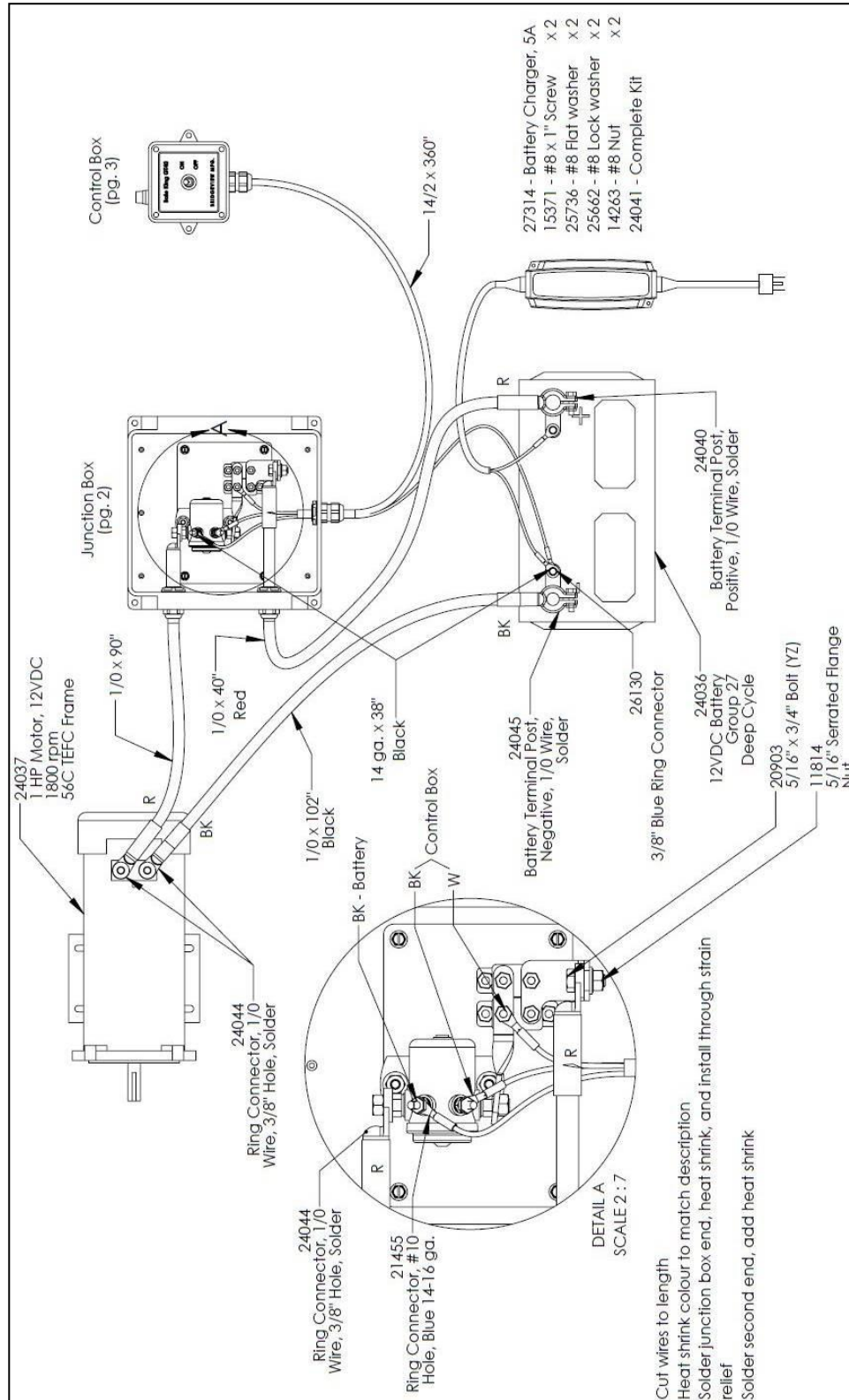
# HYDRAULIC SCHEMATICS

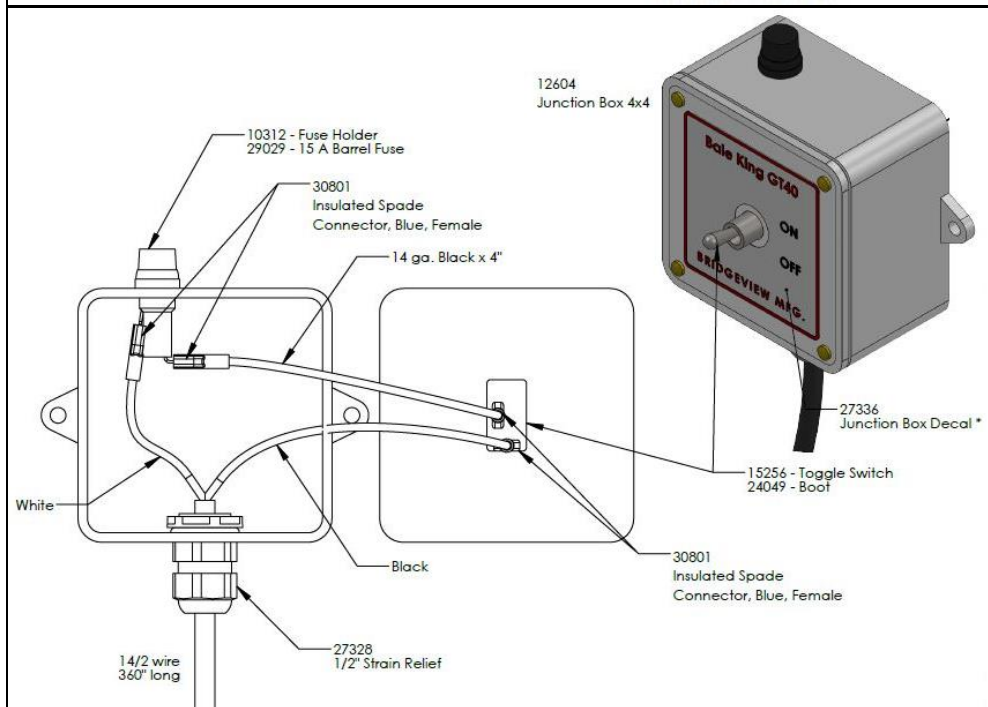
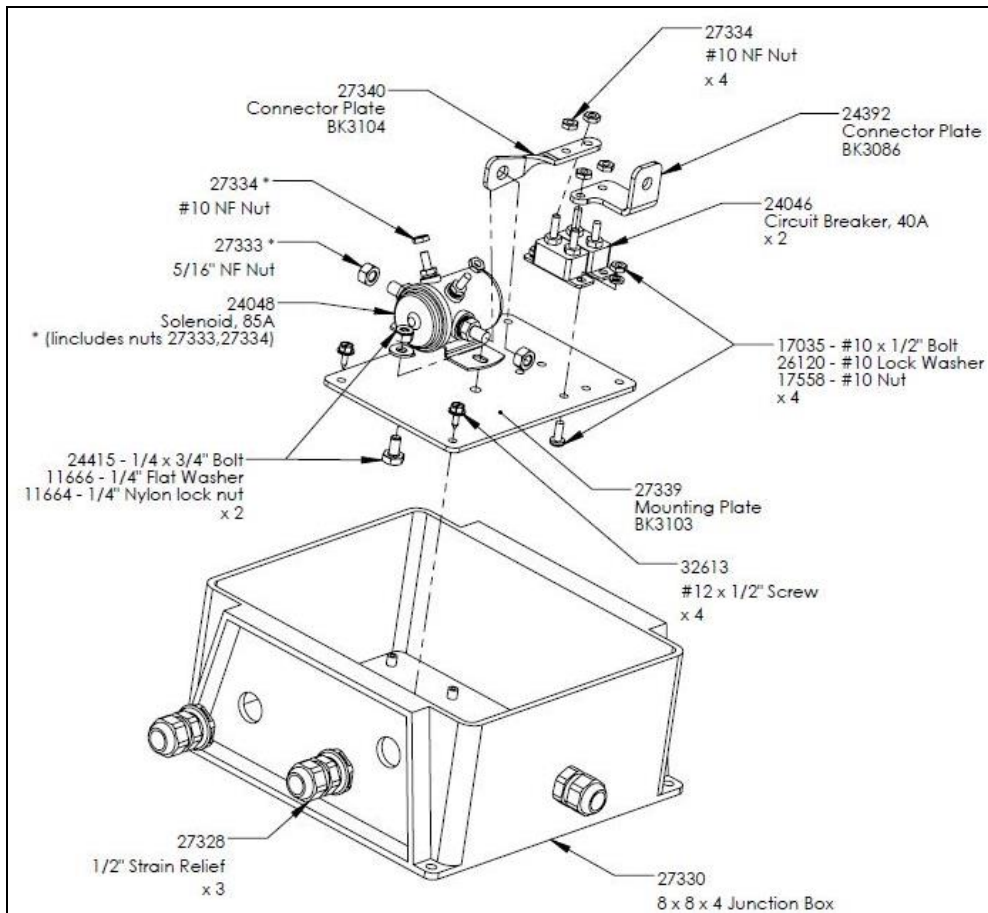






## ELECTRICAL SCHEMATICS







## NOTES

---

---

---

---

---

---

---

---

---

---

---

---

---

---

---

---

---

---

---

---

---

---

---

---

---

---

---

---

---

---

**BRIDGEVIEW MANUFACTURING INC.**  
**P.O. BOX 4, HWY 22**  
**GERALD, SASK. S0A 1B0**  
**CANADA**  
**Ph: 306-745-2711**  
**Fax: 306-745-3364**  
**Email: [bmi@sasktel.net](mailto:bmi@sasktel.net)**  
**[www.bridgeviewmanufacturing.com](http://www.bridgeviewmanufacturing.com)**