



BRIDGEVIEW MFG. INC.



BALE KING BRX850

Bale Carrier



Set-Up Instructions

Last Updated: February 26, 2025

BRIDGEVIEW MANUFACTURING INC.

P.O BOX 4, HWY 22

GERALD, SASK. S0A 1B0

CANADA

Ph: 306-745-2711

Fax: 306-745-3364

Email: bmi@sasktel.net

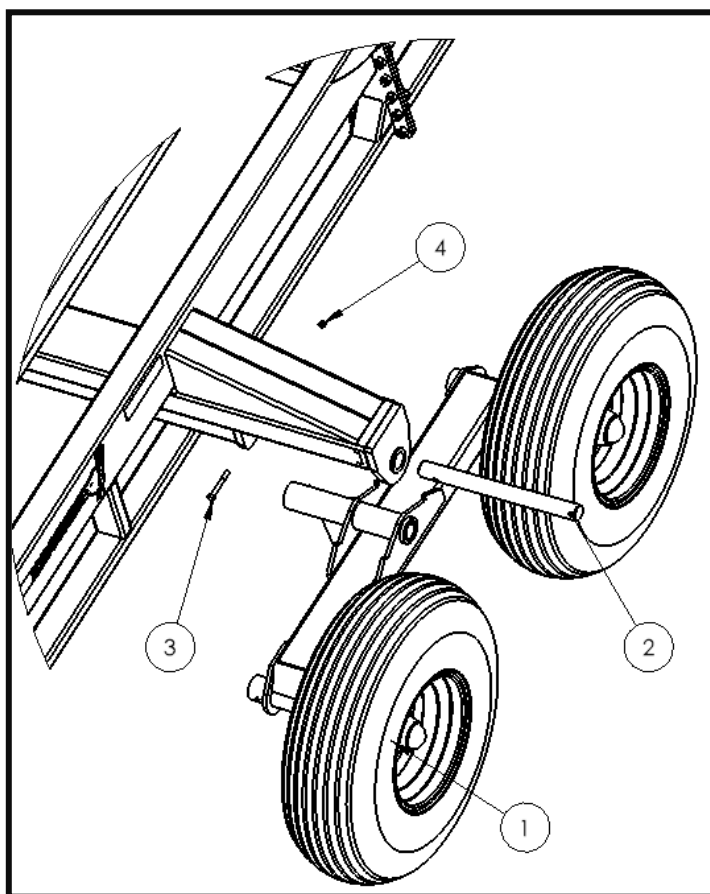
www.bridgeviewmanufacturing.com



When your new Bale King BRX850 arrives by flatbed truck, there are a few things that must be done to get it ready for use. This manual provides step-by-step instructions. Not all instructions are relevant to every machine.

1. Installing Axles

Install the axles, with wheel assemblies, onto the machine if your machine was shipped without the axles installed. There is a left and a right axle for each machine. The **long side** of the axle goes towards the **front of the machine** and is orientated as shown below.



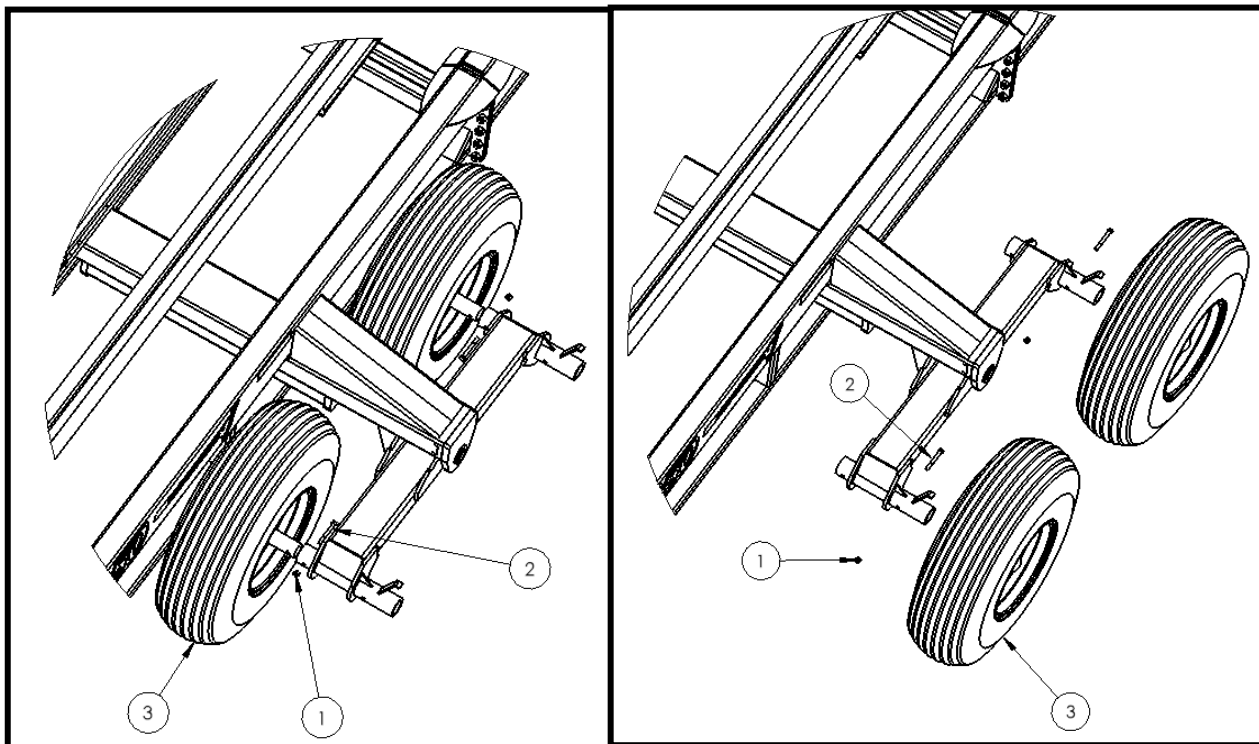
Item #	Description	ID number	QTY.
1	Rocking Axle Weldment Right	34789	1
	and (Left)	(34782)	1
	Tire 14L-16.1 SL	22851	4
	Option (Tire 16.5 L -16.1)	(12850)	(4)
	6500 lb Axle Spindle	29679	4



	9/16" x 3/4" NF Wheel Stud	10347	32
2	Pivot Pin	34814	2
3	1/2" x 4" Bolt	23540	2
4	1/2" Stover Lock Nut	14393	2

2. Rotate Axle Spindles (14L-16.1 Tires)

- Rotate the axle spindles on the right axle. Remove the 1/2" x 4" Bolts and 1/2" Nylon Lock Nuts holding the spindles onto the rocking axle.
- Reinstall Spindles on the outside on the outside of the axle using the removed hardware.

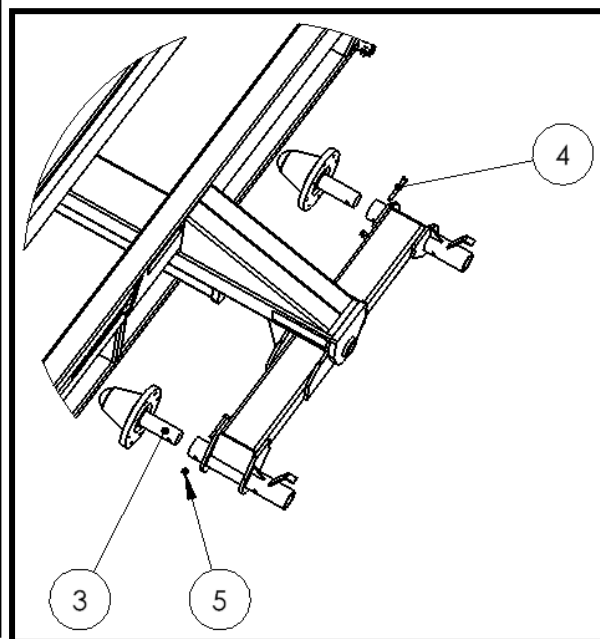
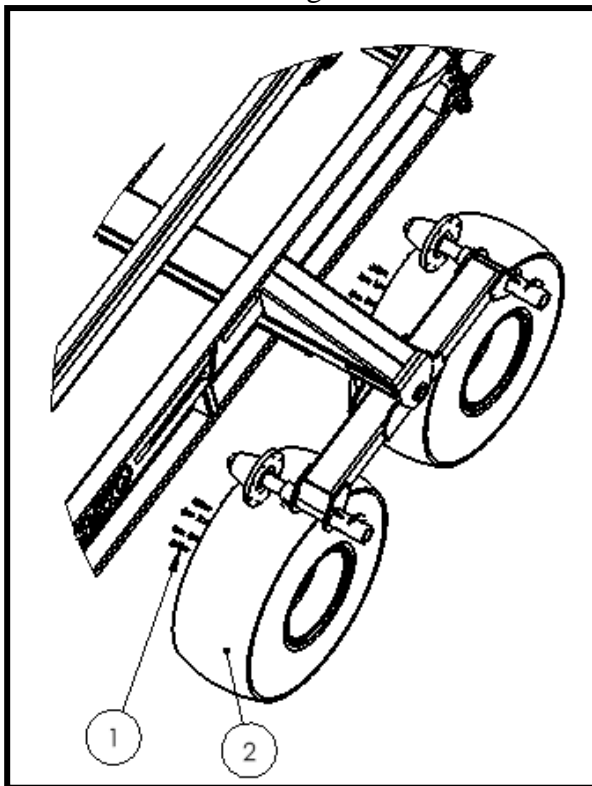


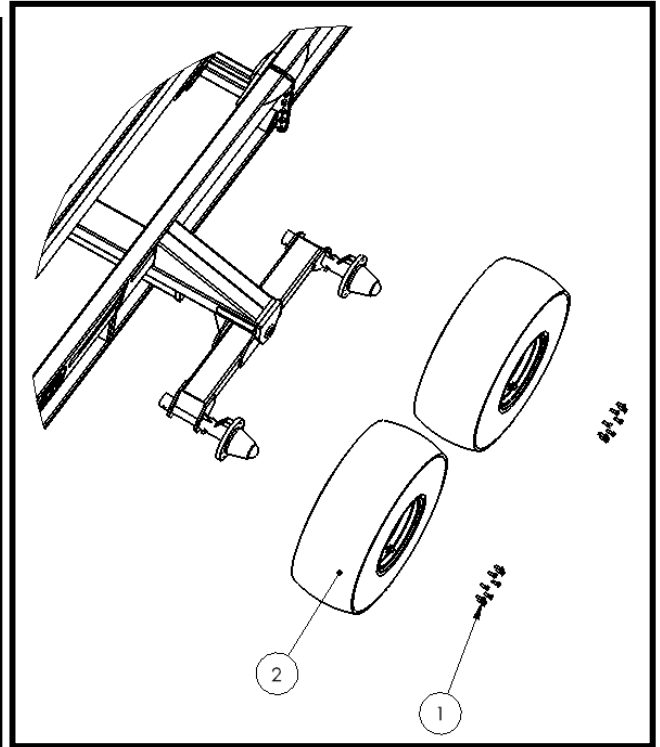
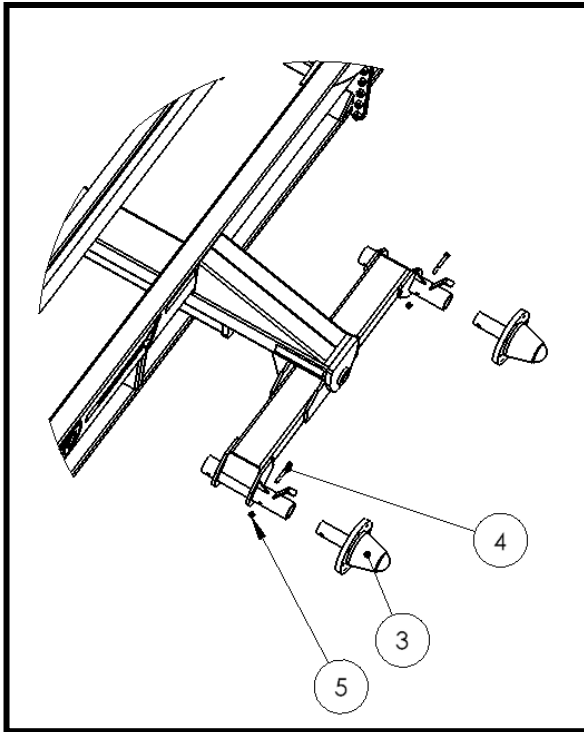
Item #	Description	ID number	QTY.
1	1/2" Nylon Lock Nut	10241	2
2	1/2" x 4" Bolt	23540	2
3	Tire 14L-16.1 SL	22851	2
	6500 lb Axle Spindle	29679	2
	9/16" x 3/4" NF Wheel Stud	10347	16



2.a Rotate Axle Spindles (16.5L-16.1 Tires)

- Remove the flipped tires, from the right-hand side of the machine, by undoing the 9/16" x 3/4" NF Wheel Studs.
- Remove the Spindles by removing the 1/2" x 4" Bolts and 1/2" Nylon Lock Nuts holding the spindles onto the rocking axle.
- Install the Spindles on the outside of the axle using the 1/2" x 4" Bolts and 1/2" Nylon Lock Nuts
- Install the tires using the 9/16" x 3/4" NF Wheel Studs.



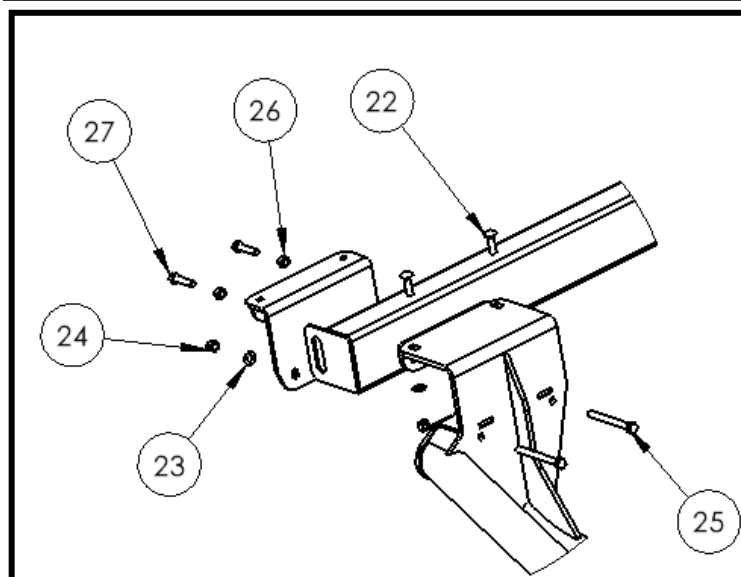
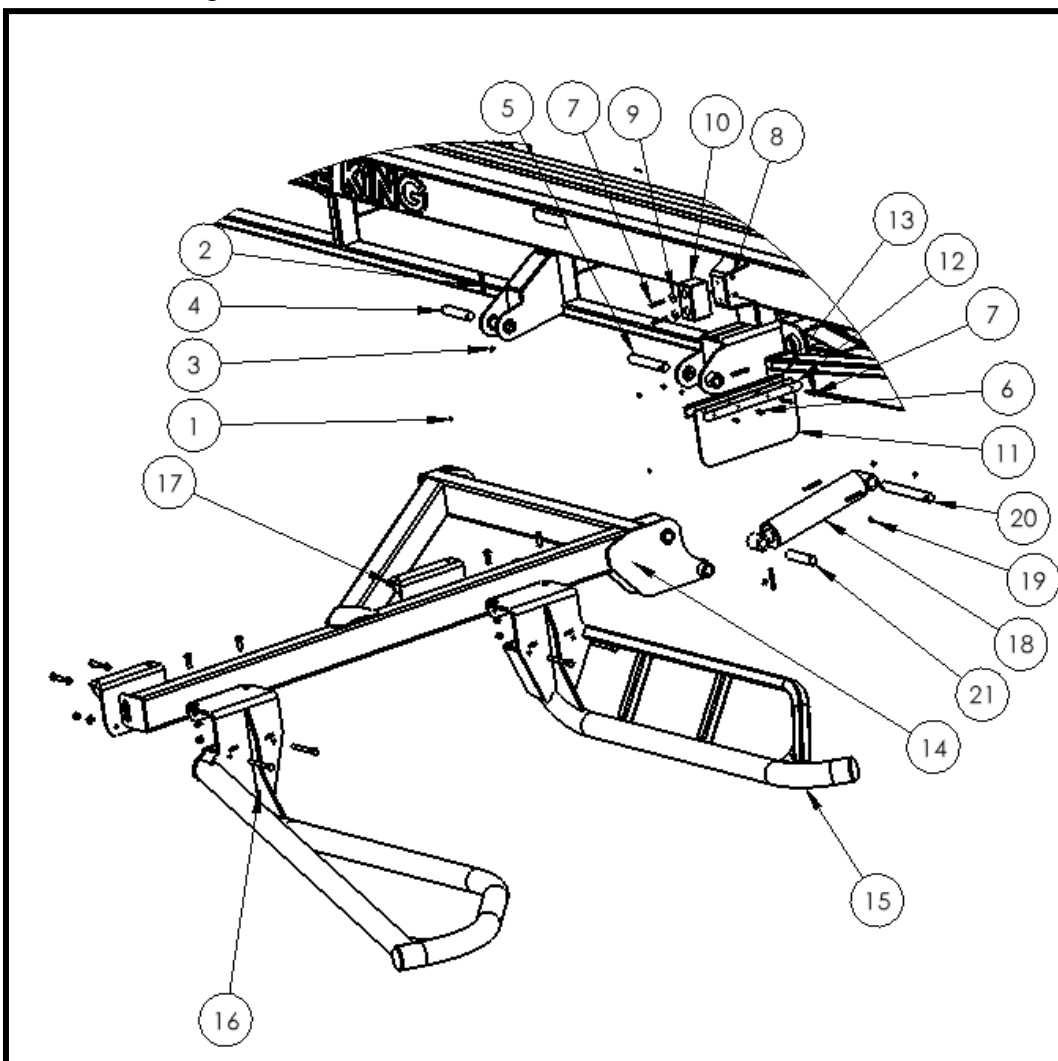


Item #	Description	ID number	QTY.
1	9/16" x 3/4" NF Wheel Stud	10347	16
2	Tire 16.5 L -16.1	12850	2
3	6500 lb Axle Spindle	29679	2
4	1/2" x 4" Bolt	23540	2
5	1/2" Nylon Lock Nut	10241	2



Lifting Arm

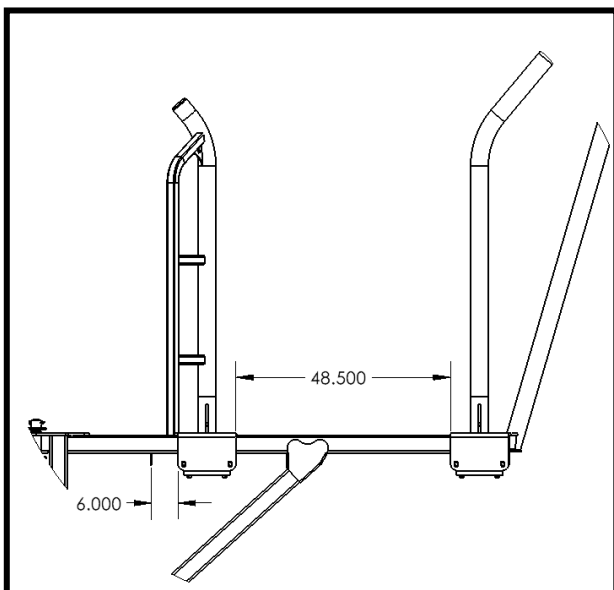
Install the lifting arm, inside fork tine, and outside fork tine.





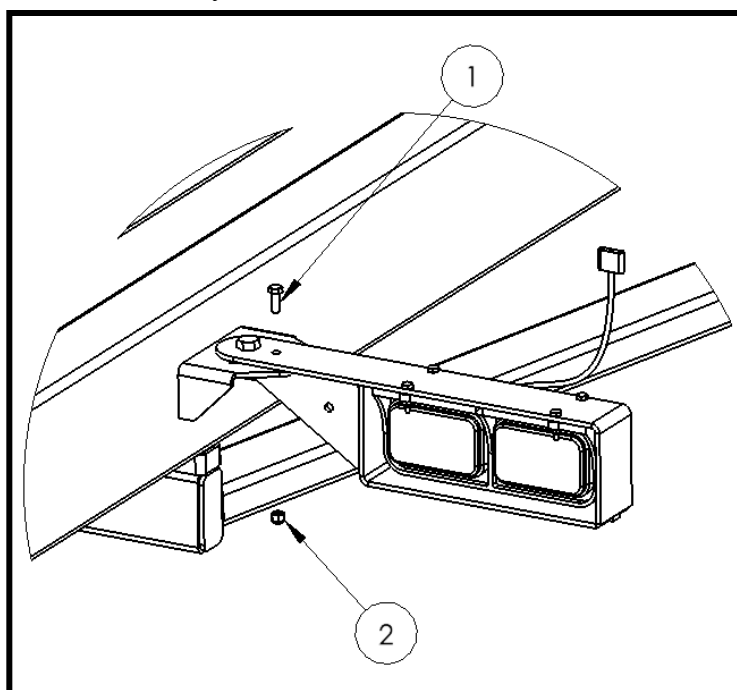
Item #	Description	ID number	QTY.
1	¼” -28 Self Tapping Grease Zerk	16364	2
2	7/16” x 3” Bolt	21784	5
3	7/16” Nylon Lock Nut	10799	5
4	Side Arm Pin 6.25	27346	1
5	Side Arm Pin 9.625”	32041	1
6	3/8” x 1” Bolt	13806	2
7	3/8” x 2 ½” Bolt	26307	4
8	3/8” Nylon Lock Nut	10806	6
9	3/8” Fender Washer	13773	2
10	Dock Bumper 6” x 3 ½” x3 ½”	34142	1
11	Mudflap	26303	1
12	Mudflap Bracket 1	26304	1
13	Mudflap Bracket 2	26305	1
14	Side Arm	27750	1
15	Inside Fork	34967	1
16	Outside Fork	34969	1
17	Fork Tine Clamp	34788	2
18	Hydraulic Cylinder (4 x 14 x 2 0 Deg)	24459	1
19	¼” -28 Self Tapping Grease Zerk 90 Deg	16389	2
20	Side Arm Float Pin 12.375	34599	1
21	Side Arm Cylinder Pin 6.75	24131	1
22	5/8” x 2” Bolt Carriage	16361	4
23	5/8” Flat Washer	13975	8
24	5/8” Nylon Lock Nut	10364	8
25	5/8”x 6” UNC Bolt	34762	4
26	5/8” Hex Nut	10176	4
27	5/8” x 2 ½” Bolt Full Thread	10008	4

Position the forks in desired position and tighten fasteners. Bridgeview Manufacturing recommends spacing the inside fork 6” from the inside stop and leave a gap of 48 ½” between fork tines as an initial setting for 6’ bales. The fork tines can later be adjusted to meet the operator’s preferences.



3. Rotate Lights

Rotate the lights out on the machine, as seen in the picture below. Remove the 3/8" x 1" Bolts and 3/8" Nylon Lock Nuts locking the rotation of the light brackets. Rotate light brackets so that the light bracket is perpendicular to the machine. Reinstall the 3/8" x 1" Bolts and 3/8" Nylon Lock Nuts.

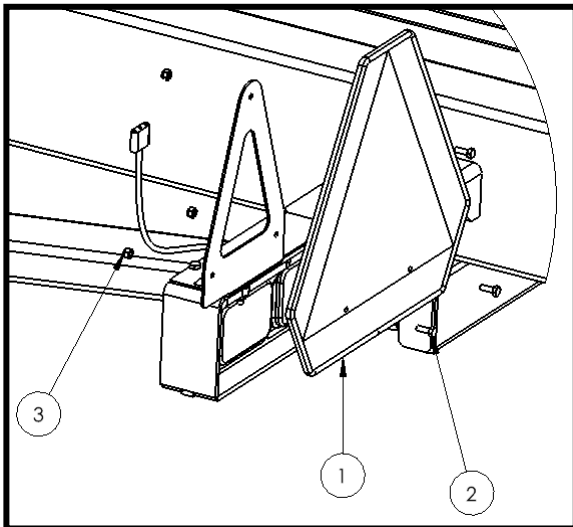


Item #	Description	ID number	QTY.
1	3/8" x 1" Bolt	13806	2
2	3/8" Nylon Lock Nut	10806	2



4. Install SMV Sign

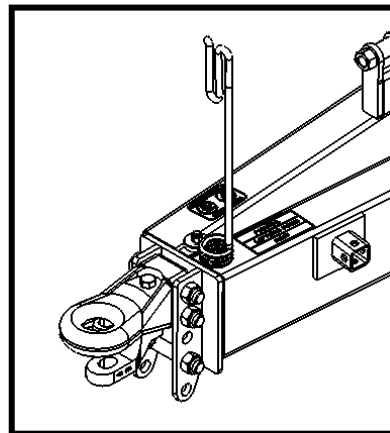
Install the SMV sign on top of the left light using 1/4" x 3/4" bolts and 1/4" nylon lock nuts



Item #	Description	ID number	QTY.
1	SMV Sign Kit	22411	1
2	1/4" x 3/4" Bolt	11809	3
3	1/4" Nylon Lock Nut	17967	3

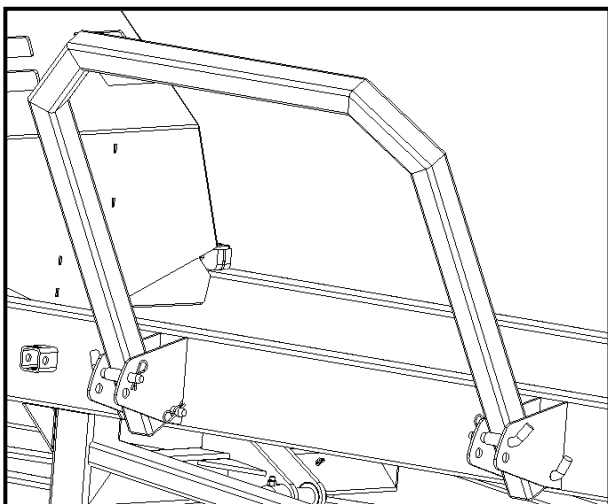
5. Rotate Hose Holder

Rotate hose holder so it is orientated as shown below. Route hydraulic hoses and electrical wire through the hose holder.



6. Install Roll Over Stop

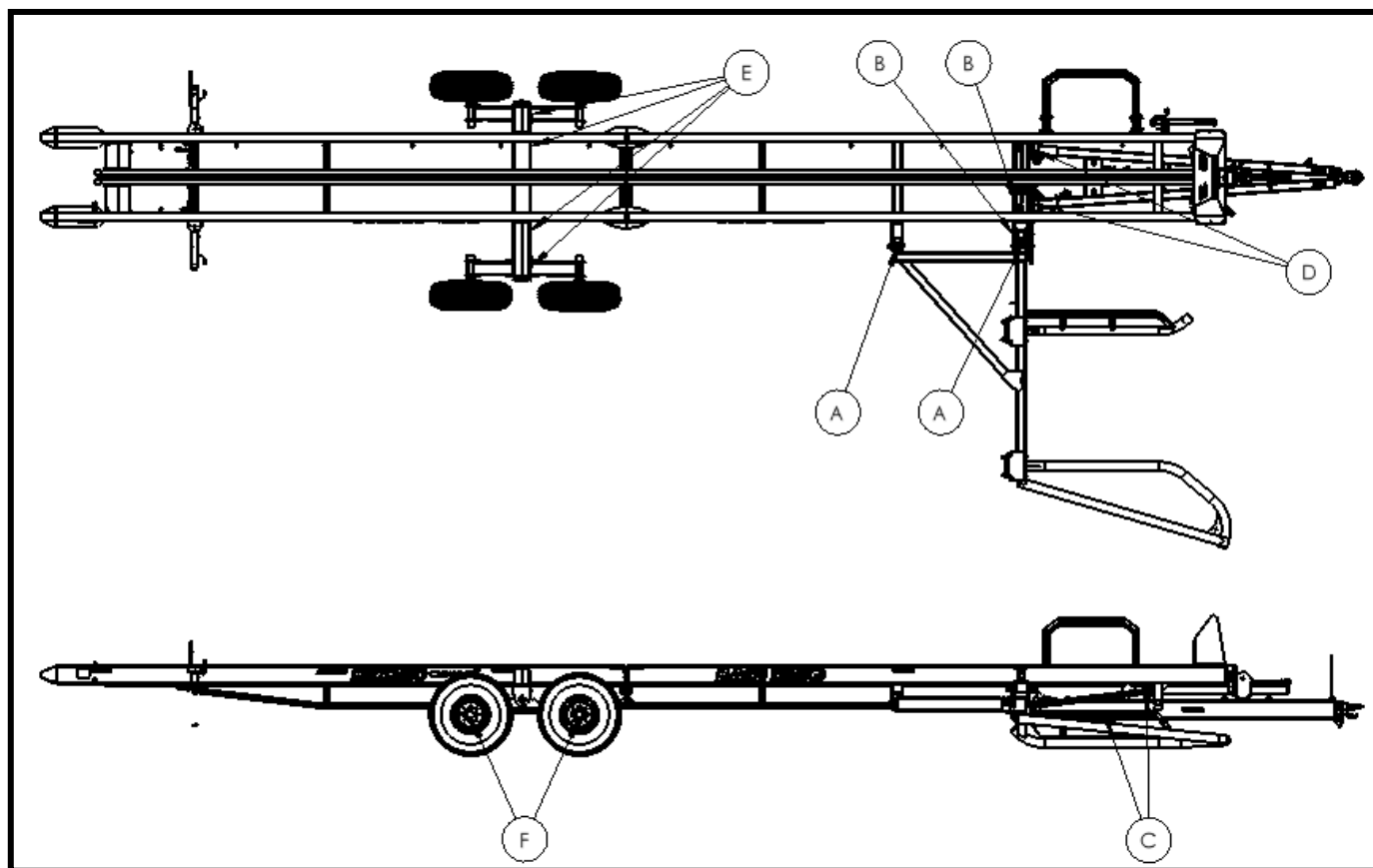
Install the roll over stop using the bent pins provided. Install in the highest position.





7. Final Inspection

- Before operation, the machine should be checked over for any loose hardware, etc.
- Check that the Tire Pressure is 52 PSI (3.59 Bar) for the 14L -16.1 Tires or 36 PSI (2.48 Bar) for the 16.5L – 16.1 Tires. Check that the wheel studs are torqued to 125 ft lb (170 Nm).
- All grease fittings should be checked for accepting grease.



Check the functionality of the hydraulics:

- Deck Tilts up and down all the way with deck resting on the A Frame when it is lowered
- Arm lifts up and down
- pusher runs moves all the way along the deck and the hydraulic stops are functioning properly