



BRIDGEVIEW MFG. INC.



***HOPPER CONE FAN AND RADIATOR
MOUNTING KITS***



Installation Manual

Last Updated: July 31, 2024



BRIDGEVIEW MANUFACTURING INC.

P.O BOX 4, HWY 22
GERALD, SASK. S0A 1B0
CANADA

Ph: 306-745-2711

Fax: 306-745-3364

Email: bmi@sasktel.net

www.bridgeviewmanufacturing.com



TABLE OF CONTENTS

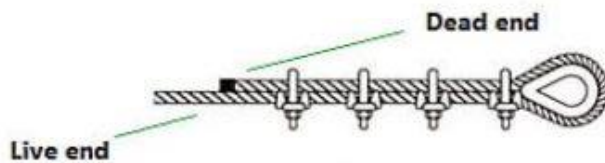
Introduction.....	1
19474 – Fan Mounting Kit - Edwards 10hp HFC Fan.....	2
19475 – Fan Mounting Kit - Edwards 3/5/7.5 hp HFC Fan	3
20681 – DRYAIR Radiator Hanging Kit.....	4
29567 – DRYAIR Radiator Hanging Kit – Larger Rad 2017	6
NOTES.....	8



Introduction

This manual covers the installation of fan mounting kits and radiator mounting kits to be used with Bridgeview Manufacturing Hopper Cones with Jet Stream Aeration. There are two fan mounting kits available for purchase. Kit 19474 is used to mount an Edwards/Keho 10-30 HP High Speed Centrifugal Fan. Kit 19475 is to mount an Edwards 3/5/7.5 HP Centrifugal Fan. There are two mounting kits for DRYAIR Radiators', 20681 and 29567. This manual only covers the hanging of the devices for information on the setup and operation of these units refer to the literature provided by their respective manufactures'.

Always saddle the live side of the cable with the cable clamp.



U-Bolt of all wire rope clips
on dead end of rope



U-Bolt of all wire rope clips
on live end of rope

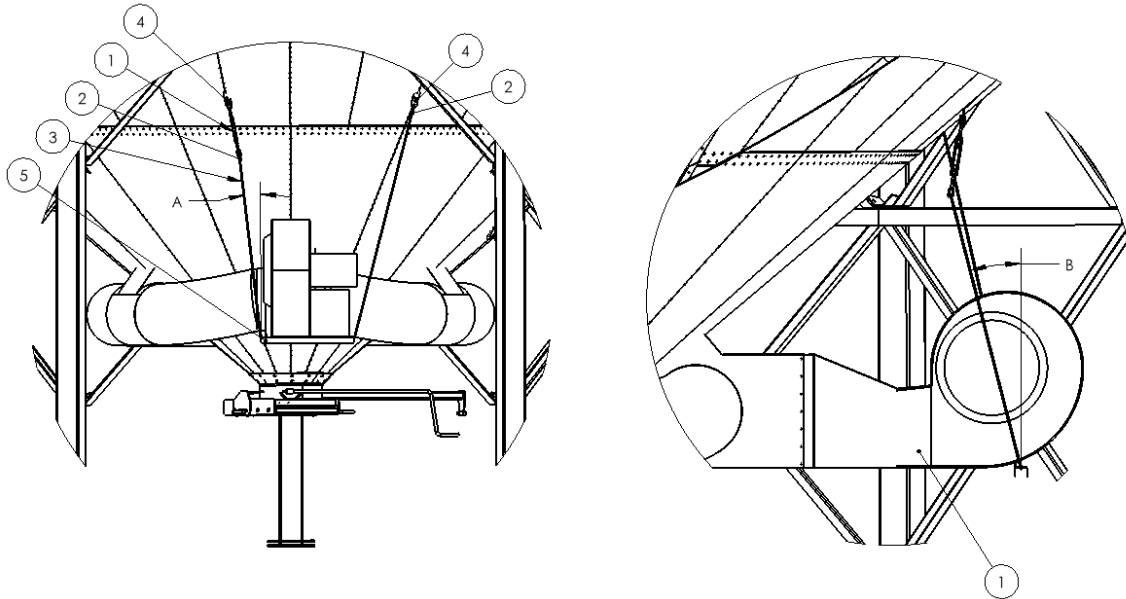


Never stagger wire rope
clips





19474 – Fan Mounting Kit - Edwards 10hp HSC Fan

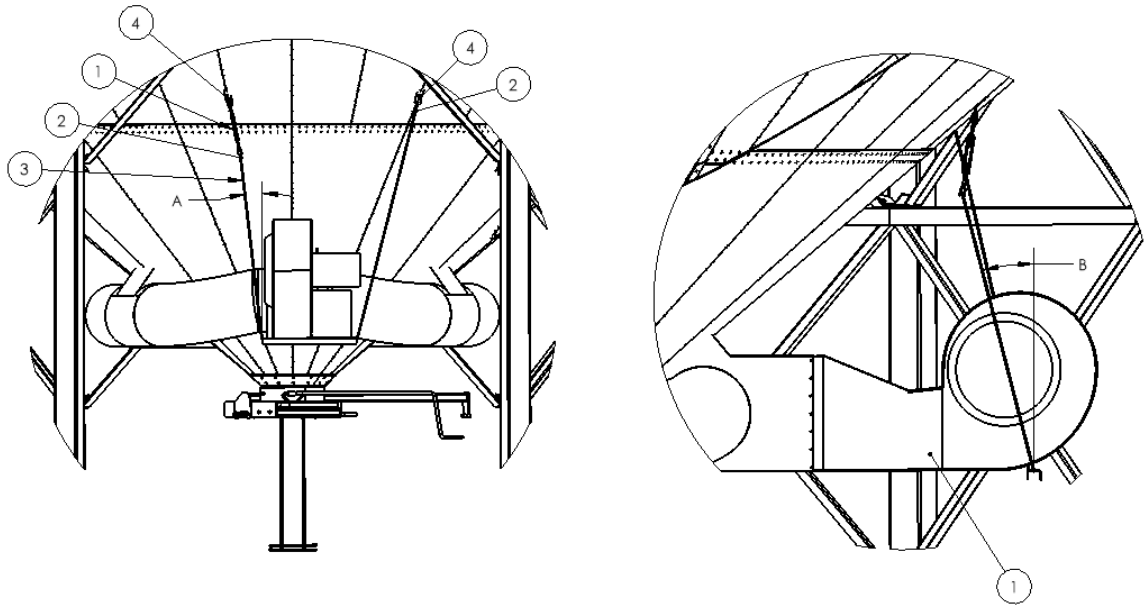


Item #	Description	ID number	QTY.
1	Turnbuckle 3/8" x 6"	14438	1
2	Cable Clamp 1/4"	15238	2
3	1/4" Steel Cable	19333	18 ft
4	Rad/Fan Support 8	19476	2
5	Jet Stream Air – Fan Support 1	19477	1
6	#14 x 1" Self Drilling Screw	14040	40

Temporarily support the fan in place and attach the outlet of the fan to the appropriate fan adaptor using the self drilling screws (#6). Attach the Fan support 1(#5) to the bottom of the fan. Select a location for the Rad/Fan Supports (#4). Select locations so that angle A (in the above picture) is between 5° and 15°, pulling away from the fan, and that angle B (in picture above) is between 5° and 20°, pulling the fan towards the hopper. Attach one end of the turnbuckle (#1) to one of the Rad/Fan Supports (#4). When selecting a location make sure cables are not in contact with any bracing or cable trays. Run the cable (#3) under the Fan Support (#5) from the free end of the turn buckle (#1) to the other Rad/Fan Support (#4). Use the Cable clamps to loop the cable through the Rad/fan support and the turn buckle and to set the cable length. Tighten up the turnbuckle to snug up the cable and remove the temporary fan support. **Always saddle the live side of the cable with the cable clamp.**



19475 – Fan Mounting Kit - Edwards 3/5/7.5 hp HSC Fan

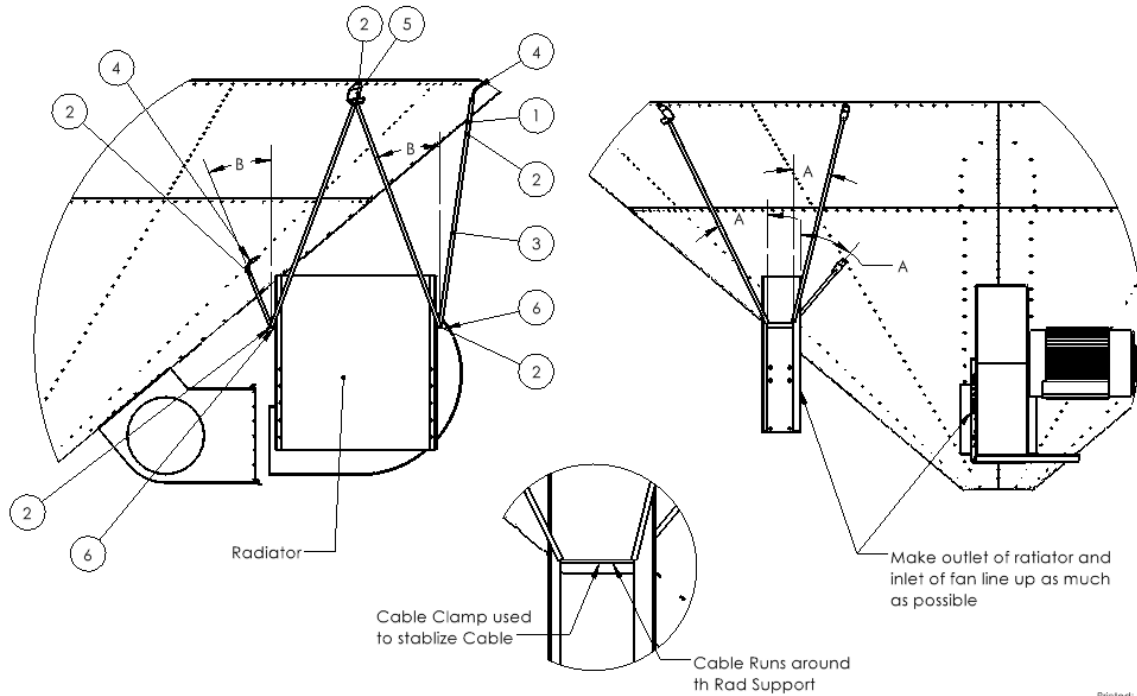


Item #	Description	ID number	QTY.
1	Turnbuckle 3/8" x 6"	14438	1
2	Cable Clamp 1/4"	15238	2
3	1/4" Steel Cable	19333	18 ft
4	Rad/Fan Support 8	19476	2
5	#14 x 1" Self Drilling Screw	14040	42

Temporarily support the fan in place and attach the outlet of the fan to the appropriate fan adaptor using the self drilling screws (#5). Select a location for the Rad/Fan Supports (#4). Select locations so that angle A (in the above picture) is between 5° and 15°, pulling away from the fan, and that angle B (in picture above) is between 5° and 20°, pulling the fan towards the hopper. When selecting a location make sure cables are not in contact with any bracing or cable trays. Attach one end of the turnbuckle (#1) to one of the Rad/Fan Supports (#4). Run the cable (#3) under the fan from the free end of the turnbuckle (#1) to the other Rad/Fan Support (#4). Use the Cable clamps to loop the cable through the Rad/fan support and the turnbuckle and to set the cable length. Tighten up the turn buckle to snug up the cable and remove the temporary fan support. **Always saddle the live side of the cable with the cable clamp.**



20681 – DRYAIR Radiator Hanging Kit



20681-001

Item #	Description	ID number	QTY.
1	Turnbuckle 3/8" x 6"	14438	1
2	Cable Clamp 1/4"	15238	5
3	1/4" Steel Cable	19333	30 ft
4	Rad/Fan Support 8	19476	2
5	Rad Support 2R2	20678	1
6	Rad Support 3	20679	2
7	Boiler Hose Holder	20680	1
8	Nut Serrated Flange 1/2"	10278	2
9	U-Bolt 1/2" x 6" x 7"	11835	1

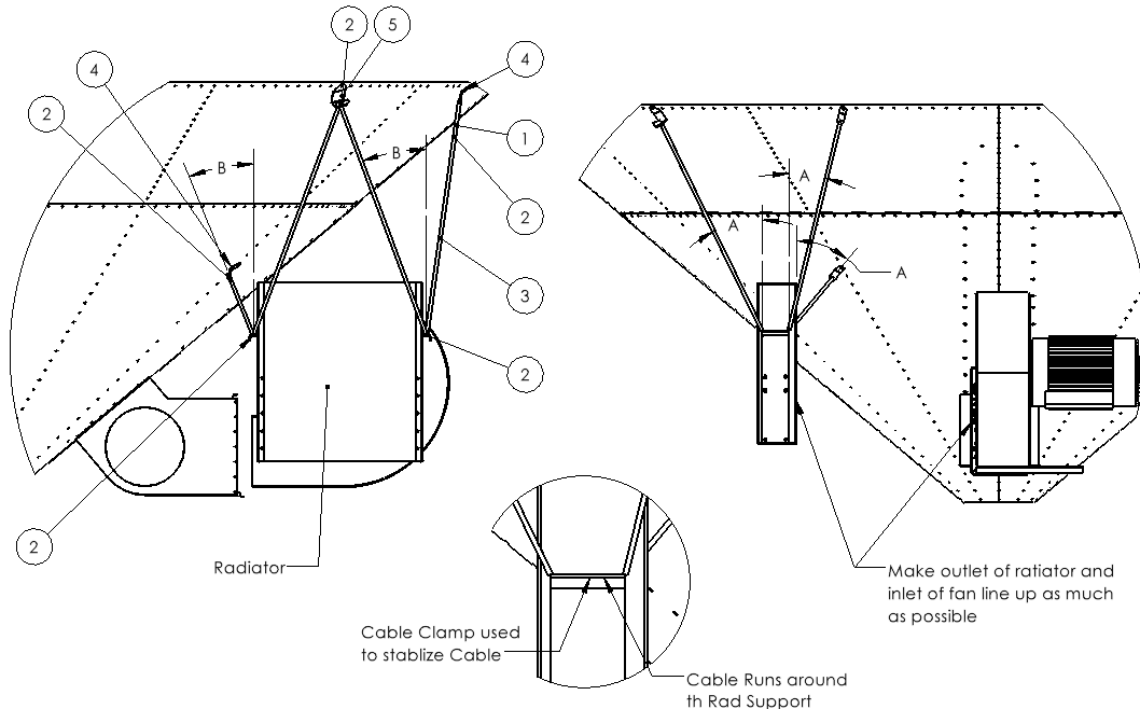
Align the radiator so that the outlet of the radiator is approximately inline with the inlet of the fan. Check the distance to the fan with the provided length of ducting. Attach two Rad Support 3s (#6) to the radiator using supplied hardware. Select a location for the Rad/Fan Supports (#4) and Rad Support 2R2 (#5). Select locations so that angle A (in the above picture) is between 5° and 15°, pulling away from the radiator, and that angle B (in picture above) is between 5° and 20°, pulling the radiator towards the hopper. All Cables should pull away from the radiator tangentially, around the hopper, and pull the radiator towards the centre of the hopper. When selecting a location make sure cables are not in



contact with any bracing or cable trays. Attach one end of the turnbuckle (#1) to the Rad/Fan Support 8 (#4) closest to the outside of the hopper. Run the cable (#3) from the free end of the turnbuckle (#1), under the outside Rad Support 3 (#6), up to and around Rad Support 2R2 (#5), down and around the inside Rad Support 3 (#6) and to the inside Rad/Fan Support (#4). Use two Cable clamps (#2) to loop the cable through the Rad/fan Support 8 and the turnbuckle and to set the cable length. **Always saddle the live side of the cable with the cable clamp. Always run the cable through the channel of the Rad Supports and NOT through the holes for the cable clamps.** Tighten up the turn buckle to snug up the cable holding the radiator in desired location. Install the remaining three Cable Clamps (#2) in the holes in Rad Supports 2R2 & 3 (#5 & #6) to prevent the radiator from moving along the cables. Remove any temporary supports holding the radiator in place. Install the Boiler Hose Holder (#7).



29567 – DRYAIR Radiator Hanging Kit – Larger Rad 2017



Item #	Description	ID number	QTY.
1	Turnbuckle 3/8" x 6"	14438	1
2	Cable Clamp 1/4"	15238	5
3	1/4" Steel Cable	19333	30 ft
4	Rad/Fan Support 8	19476	2
5	Rad Support 2R2	20678	1

Align the radiator so that the outlet of the radiator is approximately inline with the inlet of the fan. Check the distance to the fan with the provided length of ducting. Select a location for the Rad/Fan Supports (#4) and Rad Support 2R2 (#5). Select locations so that angle A (in the above picture) is between 5° and 15°, pulling away from the radiator, and that angle B (in picture above) is between 5° and 20°, pulling the radiator towards the hopper. All Cables should pull away from the radiator tangentially, around the hopper, and pull the radiator towards the centre of the hopper. When selecting a location make sure cables are not in contact with any bracing or cable trays. Attach one end of the turnbuckle (#1) to the Rad/Fan Support 8 (#4) closest to the outside of the hopper. Run the cable (#3) from the free end of the turn buckle (#1), under the outside back of the radiator, up to and around Rad Support 2R2 (#5), down and around the front of the radiator and to the inside Rad/Fan Support (#4). Use two Cable clamps (#2) to loop the



cable through the Rad/fan Support 8 and the turnbuckle and to set the cable length. **Always saddle the live side of the cable with the cable clamp. Always run the cable through the channel of the Rad Supports and NOT through the holes for the cable clamps.** Tighten up the turnbuckle to snug up the cable holding the radiator in desired location. Install the remaining three Cable Clamps (#2) in the holes in Rad Support 2R2 (#5) and onto the front and back of the radiator itself to prevent the radiator from moving along the cables. Remove any temporary supports holding the radiator in place.



NOTES



BRIDGEVIEW MANUFACTURING INC.

P.O. BOX 4, HWY 22
GERALD, SASK. S0A 1B0
CANADA

Ph: 306-745-2711

Fax: 306-745-3364

Email: bmi@sasktel.net

www.bridgeviewmanufacturing.com