



BRIDGEVIEW MFG. INC.



BALE KING 6300

Bale Processor

Set-up Instructions

Last Updated: March 2024

Bridgeview Manufacturing Inc.
P.O. Box 4
Gerald, Saskatchewan, Canada
S0A 1B0
Phone: 1-306-745-2711
Fax: 1-306-745-3364
Email: bmi@sasktel.net
www.bridgeviewmanufacturing.com



When your new Bale King 6300 arrives by truck, there are a few things that must be done to get it ready for use. This manual provides step-by-step instructions.

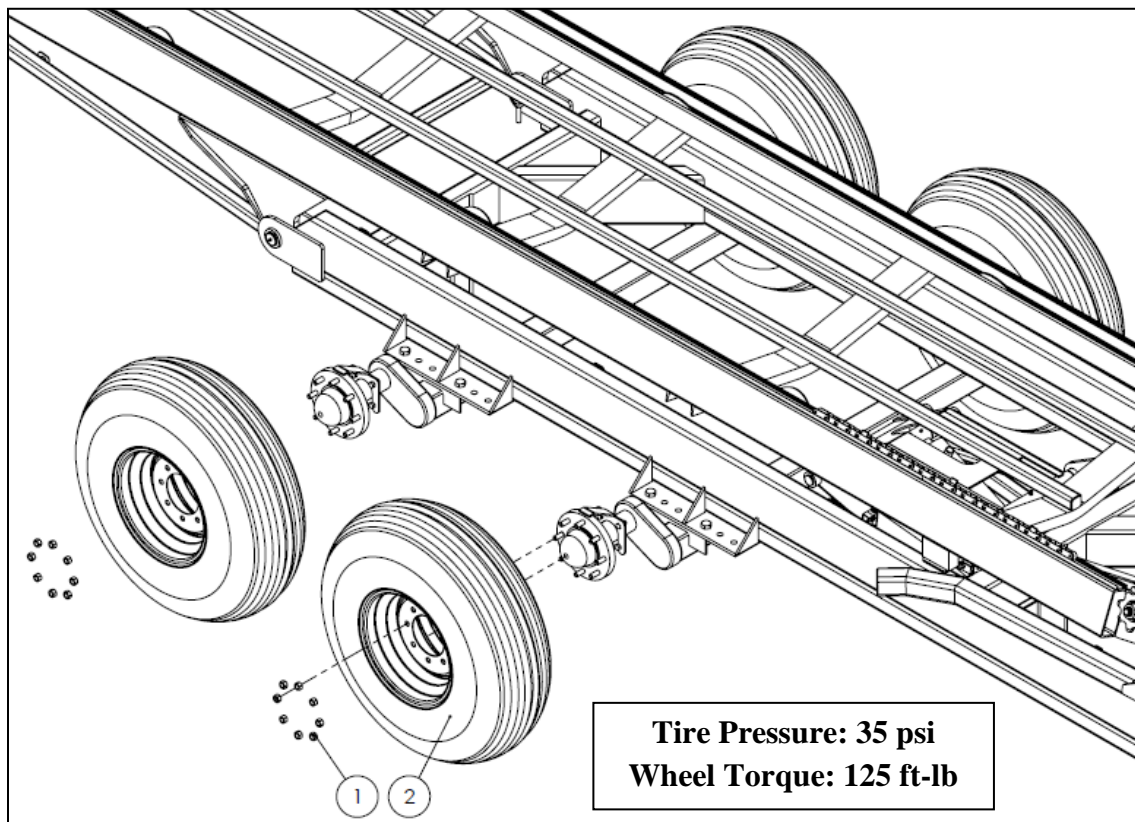
NOTE: Not all steps will be required, depending on how the machine was shipped.

1. Gather all loose components

- Remove the loose components from the trailer and make sure all are present (if not installed on machine):

- Tires x 4
- Front Hitch Frame
- Jack
- PTO Shaft
- Wings and Front Rack
- Hose Holder Linkage
- SMV Sign

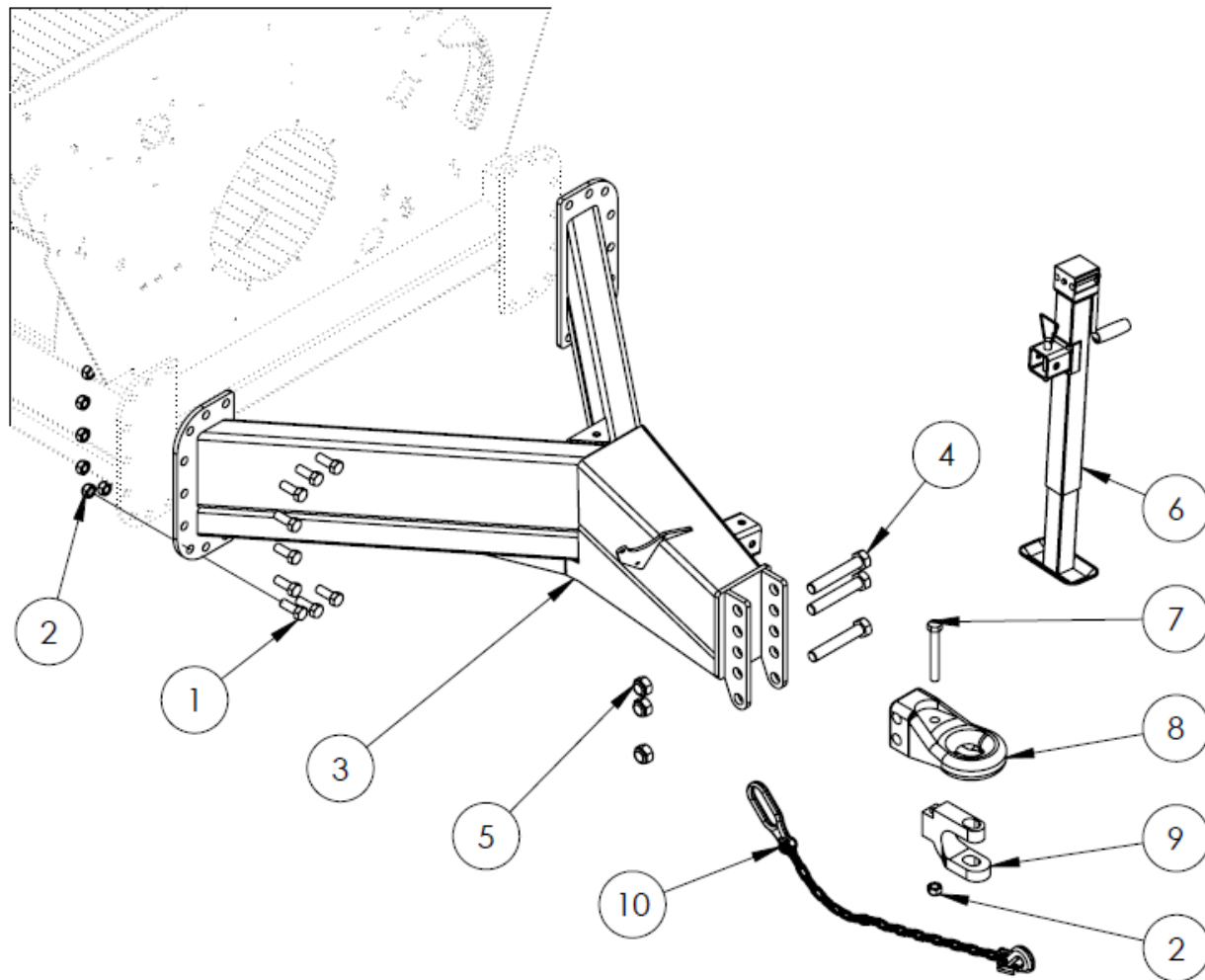
2. Tires (if necessary)



| # | DESCRIPTION | PART # | QTY | LOCATION | INITIAL |
|---|---------------------------------|--------|-----|----------|---------|
| 1 | Wheel Nut | 23183 | 32 | | |
| 2 | Tire & Rim, 14L-16.1SL (12 Ply) | 22851 | 4 | | |



3. Install Hitch and Jack



| # | DESCRIPTION | PART # | QTY | LOCATION | INITIAL |
|----|-----------------------------|--------|-----|-------------|---------|
| 1 | Bolt, 3/4 x 2" | 13800 | 18 | | |
| 2 | Nut, 3/4" Stover Lock | 11823 | 18 | | |
| 3 | Hitch Frame | 35562 | 1 | | |
| 4 | Bolt, 1 x 6" | 21728 | 3 | Install | |
| 5 | Nut, 1" Stover Lock | 21746 | 2 | Install | |
| 6 | Jack, 7000 lb | 35250 | 1 | Side of Tub | |
| 7 | Bolt, 3/4 x 5-1/2" | 26406 | 1 | Install | |
| 8 | Hitch Tongue | 23404 | 1 | Install | |
| 9 | Hitch Clevis Kit | 25540 | 1 | OPTION | |
| 10 | Safety Chain, 21000lb x 52" | 23559 | 1 | Install | |

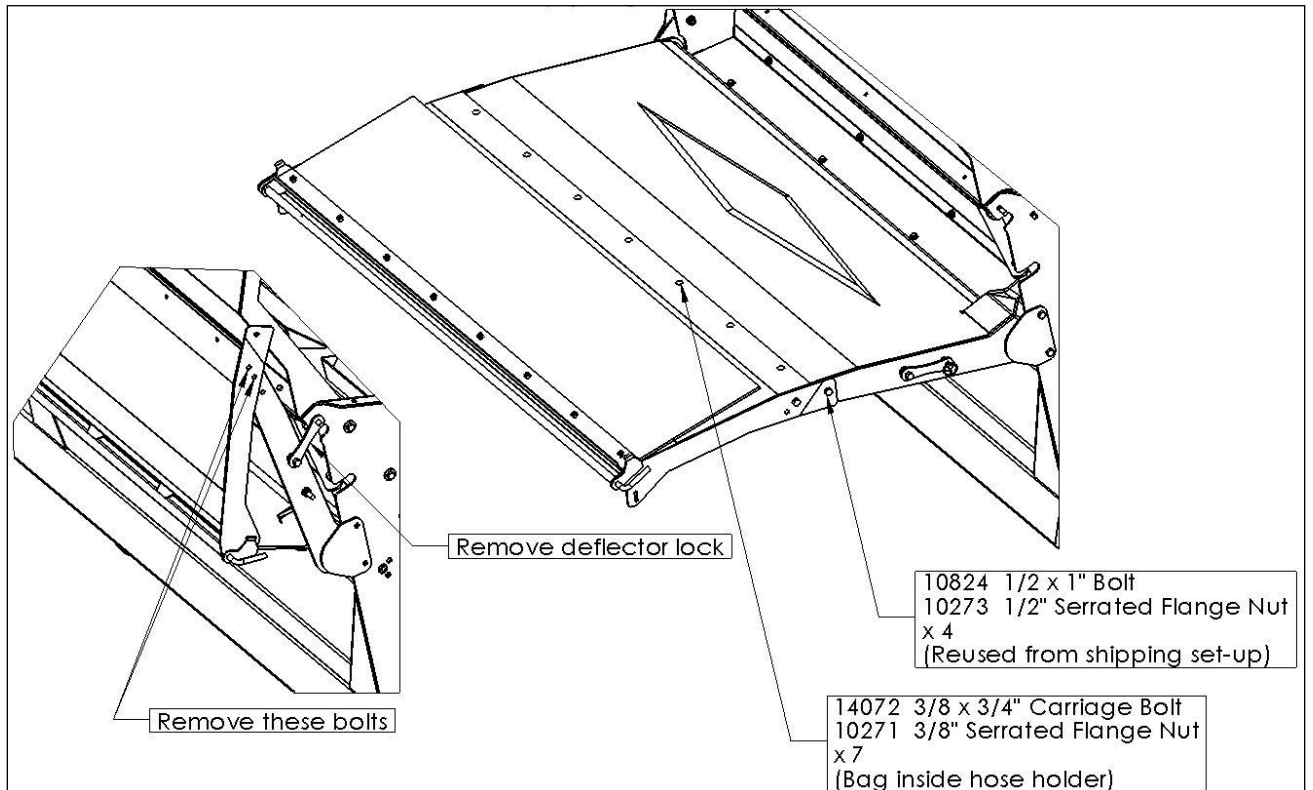


4. Unfold Side Deflector

- Remove safety lock
- Remove outer deflector by removing the four bolts connecting the two deflector pieces
- Lower the deflector using the hydraulics.

* The control box must be used to activate the deflector function *

- Install the outer deflector reusing the removed bolts, plus additional bolts provided in the shipping package



- Lift the deflector when finished and install the safety lock.



5. Install PTO Shaft

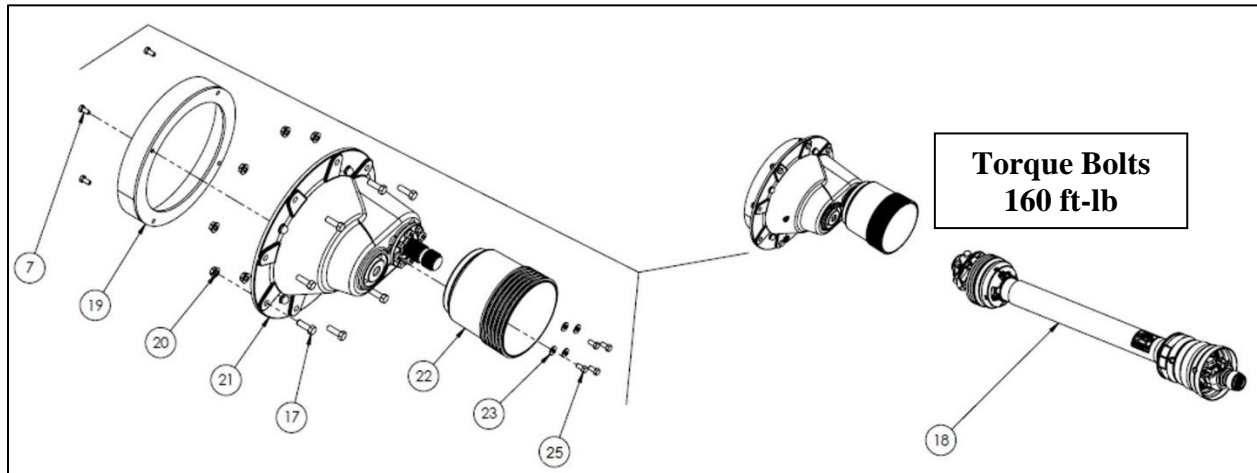
- Unsnap the PTO boot guard from the ring

- Install the PTO shaft through the guard and over the spline of the gearbox. Remove the two 5/8" bolts running through the coupler, then slide onto the shaft until the bolt holes line up with the groove.

Tighten these bolts to 160 ft-lb.

- Snap the shield back into place

- Rest PTO shaft on the storage bracket

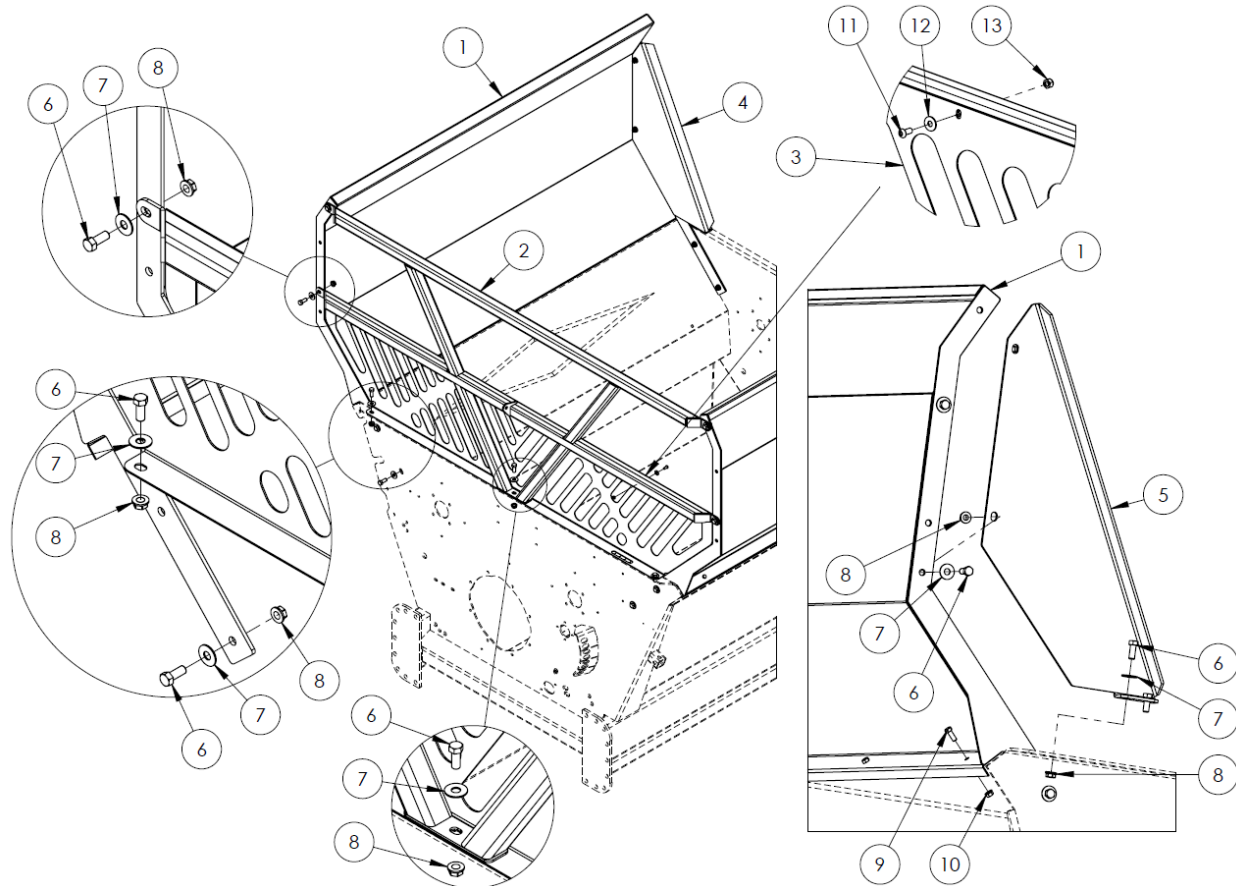


| # | DESCRIPTION | PART # | QTY | LOCATION | INITIAL |
|----|-----------------------|--------|-----|----------|---------|
| 1 | Bolt, 3/8" x 3/4" | 11816 | 4 | Install | |
| 17 | Bolt, 1/2" x 1-1/2" | 10174 | 8 | Install | |
| 18 | PTO Shaft | 20546 | 1 | Tub | |
| 19 | Gearbox Twine Guard | 23002 | 1 | Install | |
| 20 | Nut, 1/2" Stover Lock | 20154 | 8 | Install | |
| 21 | Gearbox Assembly | 22158 | 1 | Install | |
| 22 | PTO Safety Shield | 32679 | 1 | Install | |
| 23 | Flat Washer, 3/8" | 11667 | 4 | Install | |
| 25 | Bolt, M10 x 16 | 25154 | 4 | Install | |



6. Install Wings (if necessary)

- Remove the shipping bracket holding the hose holder. Support the hose holder externally.
- Install all wing components as shown below. The deflector will need to be lowered to access some bolts.

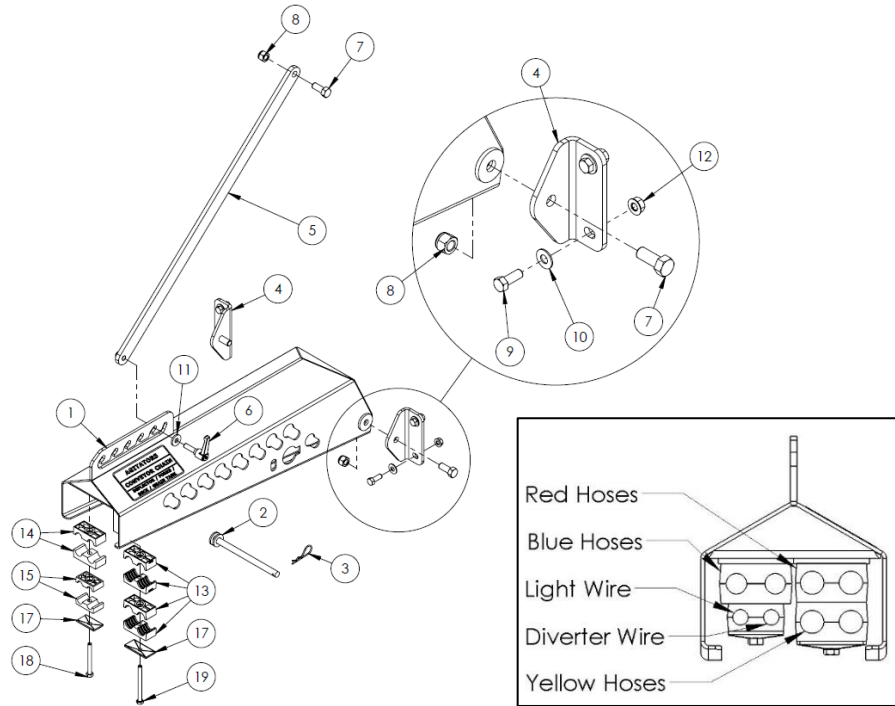


| # | DESCRIPTION | PART # | QTY | LOCATION | INITIAL |
|----|--------------------------------|--------|-----|------------------|---------|
| 1 | Wing | 31692 | 2 | Shipping Bracket | |
| 2 | Front Rack | 31730 | 1 | Shipping Bracket | |
| 3 | Front Rack Grating | 32479 | 1 | Install | |
| 4 | Wing Bolt-on Bracket (Right) | 22431 | 1 | Tub | |
| 5 | Wing Bolt-on Bracket (Left) | 22430 | 1 | Tub | |
| 6 | Bolt, 1/2" x 1 1/4" | 10240 | 23 | HW Kit | |
| 7 | Washer, 1/2" Flat | 11668 | 23 | HW Kit | |
| 8 | Nut, 1/2" Serrated Flange | 10273 | 23 | HW Kit | |
| 9 | Bolt, 3/8 x 1" | 13806 | 8 | HW Kit | |
| 10 | Nut, 3/8" Serrated Flange | 10271 | 8 | HW Kit | |
| 11 | Bolt, 5/16" x 3/4" Button Head | 32513 | 8 | Install | |
| 12 | Washer, 5/16" Flat | 12496 | 8 | Install | |
| 13 | Nut, 5/16" Nylon Lock | 11815 | 8 | Install | |



7. Install Hose Holder (if necessary)

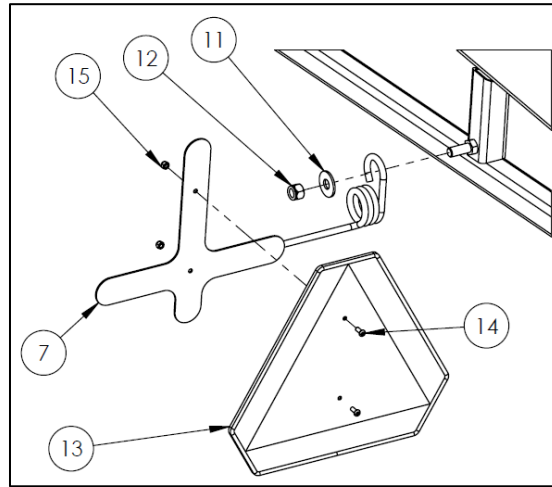
- Install the hose holder linkage to the front rack panel.



| # | DESCRIPTION | PART # | QTY | LOCATION | INITIAL |
|----|---------------------------------|--------|--------|-------------------|---------|
| 1 | Adjustable Hose Holder | 35038 | 1 | Install | |
| 2 | Hose Holder Pin | 31745 | 1 | Install | |
| 3 | Hairpin, 3/32 x 5/8" | 11786 | 1 | Install | |
| 4 | Hose Holder Pivot Bracket | 35041 | 2 | Install | |
| 5 | Hose Holder Linkage | 35040 | 1 | Tub | |
| 6 | Threaded Adjustable Handle | 34944 | 1 | HW Kit | |
| 7 | Bolt, 1/2 x 1-1/4" | 10240 | 2 1 | Install HW Kit | |
| 8 | Nut, 1/2" Nylon Lock | 10241 | 2 1 | Install HW Kit | |
| 9 | Bolt, 3/8" x 1" | 13806 | 4 | Install | |
| 10 | Flat Washer, 3/8" | 11667 | 4 | Install | |
| 11 | Flat Washer, 3/8" Heavy | 33189 | 1 | HW Kit | |
| 12 | Nut, 3/8" Serrated Flange | 10271 | 4 | Install | |
| 13 | Hydraulic Hose Clamp, 1/2" | 21561 | 4 | Install | |
| 14 | Hydraulic Hose Clamp, 3/8" | 22180 | 2 | Install | |
| 15 | Hydraulic Hose Clamp, 1/4" | 22181 | 2 | Install | |
| 16 | Hydraulic Hose Clamp Cap, Large | 21725 | 1 | Install | |
| 17 | Hydraulic Hose Clamp Cap, Small | 22182 | 1 | Install | |
| 18 | Bolt, 5/16" x 3" | 22844 | 1 | Install | |
| 19 | Bolt, 5/16" x 3-1/2" | 13765 | 1 | Install | |



8. Install SMV Sign Bracket

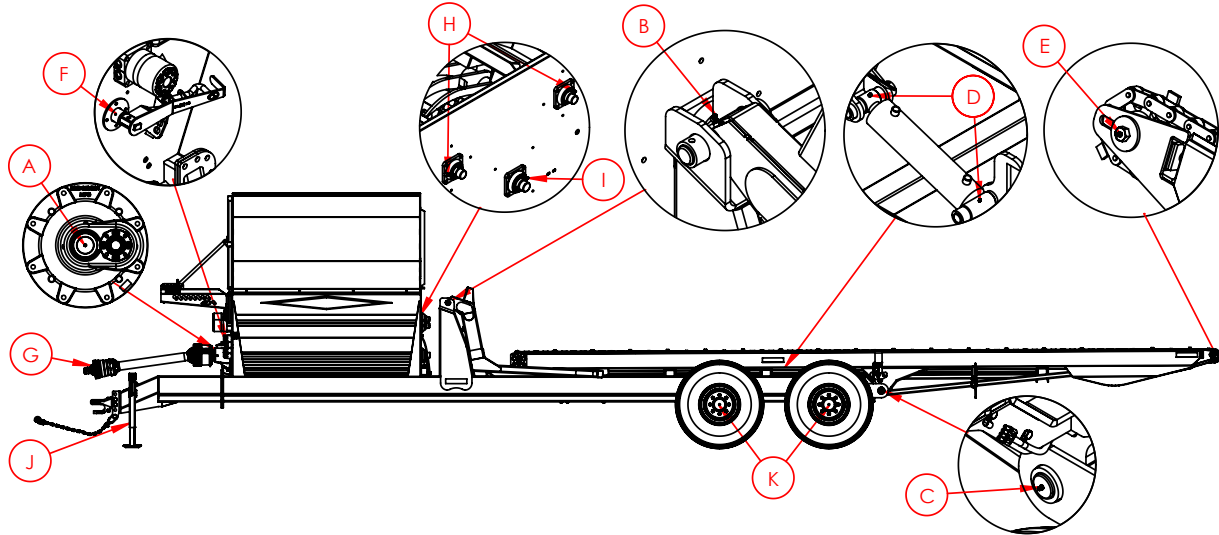


| # | DESCRIPTION | PART # | QTY | LOCATION | INITIAL |
|----|-----------------------------|--------|-----|------------|---------|
| 7 | SMV Sign Bracket | 24656 | 1 | Front Rack | |
| 11 | Bolt, 5/8" Flat | 21390 | 1 | HW Kit | |
| 12 | Nut, 5/8" Nylon Lock | 10364 | 1 | HW Kit | |
| 13 | SMV Sign | 22411 | 1 | Install | |
| 14 | Bolt, 1/4 x 5/8" Screw Head | NSS | 2 | Install | |
| 15 | Nut, 1/4" Nylon Lock | NSS | 2 | Install | |



9. Final inspection

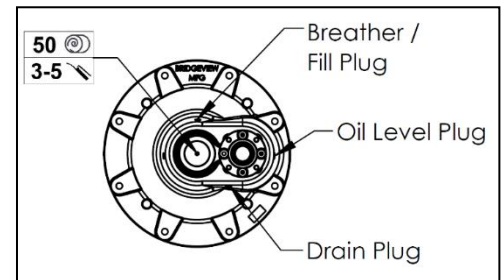
- Before operation, the machine should be checked over for any loose hardware, etc.
- All grease fittings should be checked for accepting grease.



- The gear box requires GL5 80W90 gear oil. The oil should be filled to the level plug (approximately **500 mL**). Ensure the breather is installed and free of obstruction.

- Check the functionality of the hydraulics as equipped:

- Rear fork lifts up and down
- Bed lifts up and down
- Bed chain moves both directions
- Discharge deflector lifts up and down
- Agitators rotate both ways
- Grain augers turn one way only (if equipped)



- Connect the PTO shaft and spin the rotor up to PTO RPM. Check for any excessive vibrations and noises.

*** MAKE SURE THAT THE TUB IS COMPLETELY EMPTY BEFORE RUNNING THE ROTOR. KEEP THE DISCHARGE AREA CLEAR AND LOWER THE DEFLECTOR AND DEFLECTOR RUBBER FULLY TO LIMIT AIR FLOW BEYOND THE TESTING AREA. ***