



**BRIDGEVIEW MFG. INC.**



## ***BALE KING BRX850***

***Bale Carrier***

***Set-Up Instructions***



Last Updated: August 15, 2023

**BRIDGEVIEW MANUFACTURING INC.**

P.O BOX 4, HWY 22

GERALD, SASK. S0A 1B0

CANADA

Ph: 306-745-2711

Fax: 306-745-3364

Email: [bmi@sasktel.net](mailto:bmi@sasktel.net)

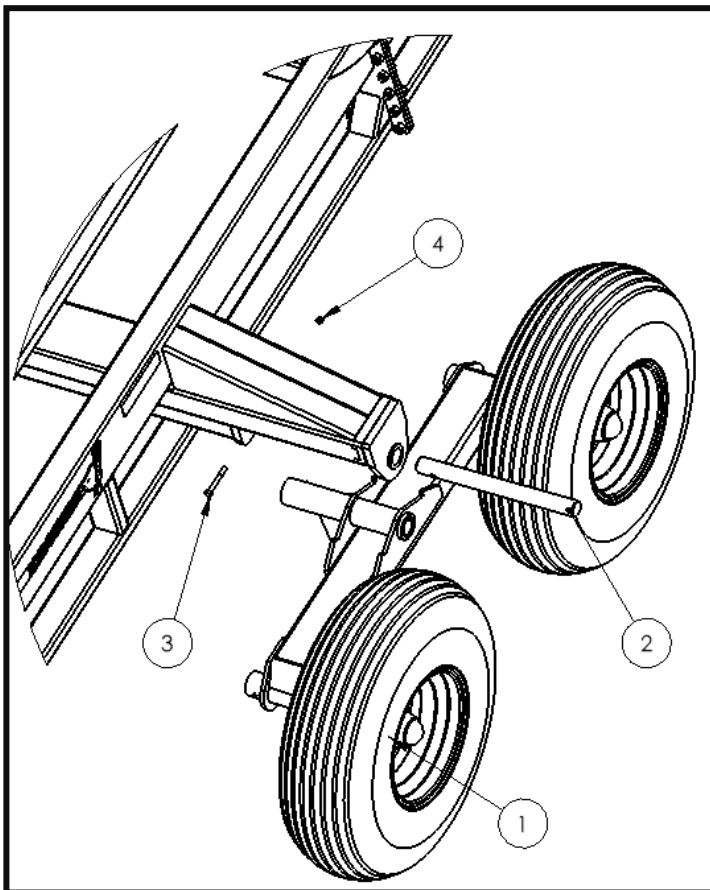
[www.bridgeviewmanufacturing.com](http://www.bridgeviewmanufacturing.com)



When your new Bale King BRX850 arrives by flatbed truck, there are a few things that must be done to get it ready for use. This manual provides step-by-step instructions. Not all instructions are relevant to every machine.

### 1. Installing Axles

Install the axles, with wheel assemblies, onto the machine. There is a left and a right axle for each machine. The **long side** of the axle goes towards the **front of the machine and is orientated as shown below.**

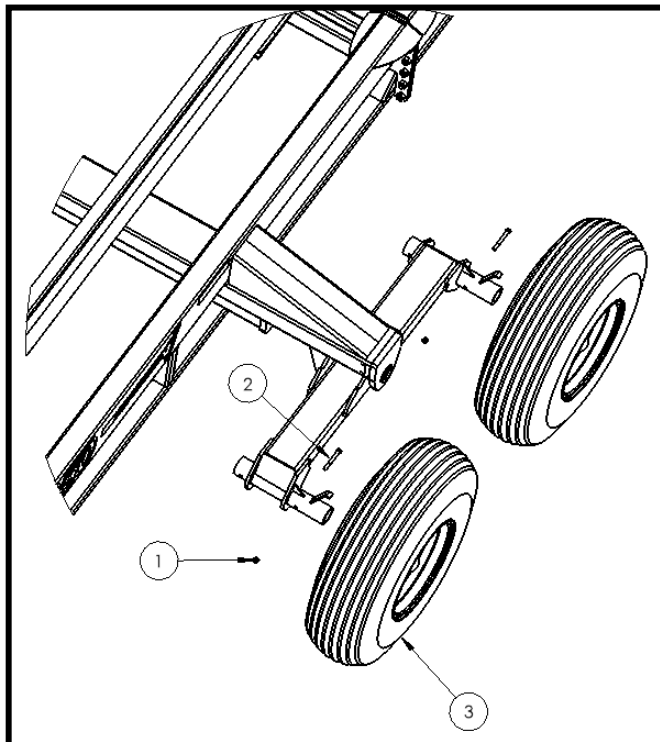
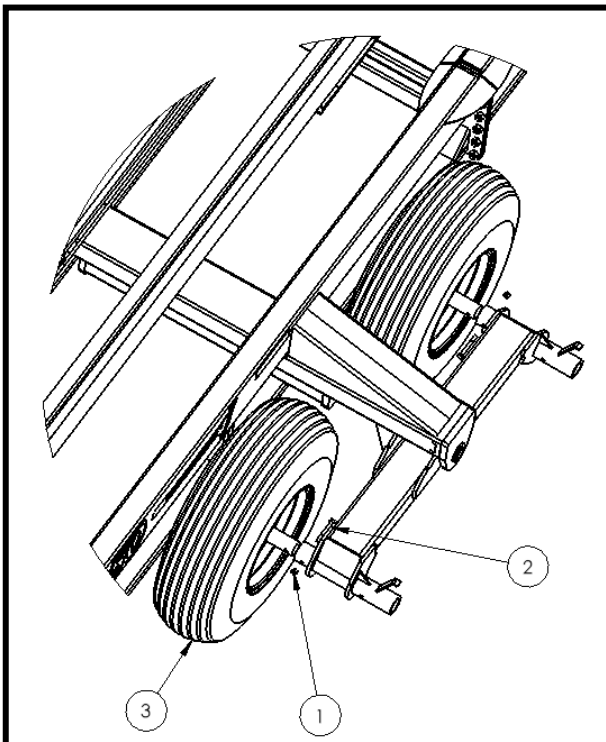


Item #	Description	ID number	QTY.
1	Rocking Axle Weldment Right	34789	1
	and (Left)	(34782)	1
	Tire 14L-16.1 SL	22851	4
	Option (Tire 16.5 L -16.1)	(12850)	(4)
	6500 lb Axle Spindle	29679	4
	9/16" x 3/4" NF Wheel Stud	10347	32
2	Pivot Pin	34814	2
3	1/2" x 4" Bolt	23540	2
4	1/2" Stover Lock Nut	14393	2



## 2. Rotate Axle Spindles

- Rotate the axle spindles on the right axle. Remove the ½” x 4” Bolts and ½” Nylon Lock Nuts holding the spindles onto the rocking axle.
- Reinstall Spindles on the outside on the outside of the axle using the removed hardware.

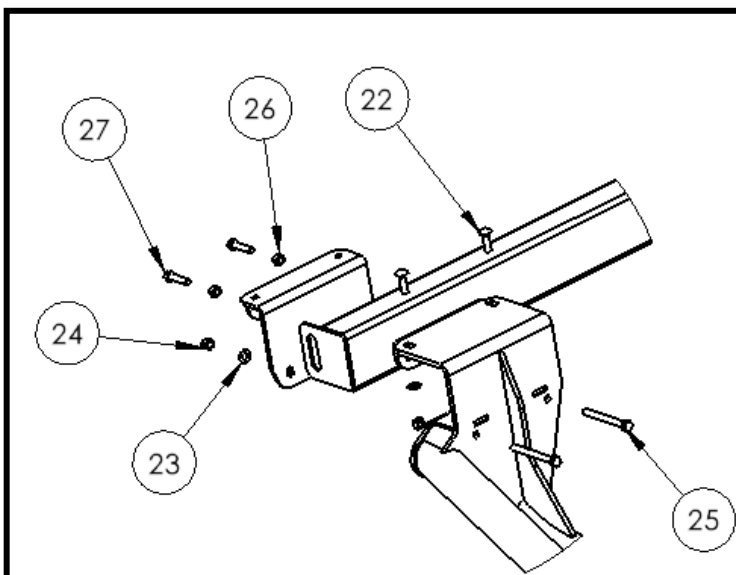
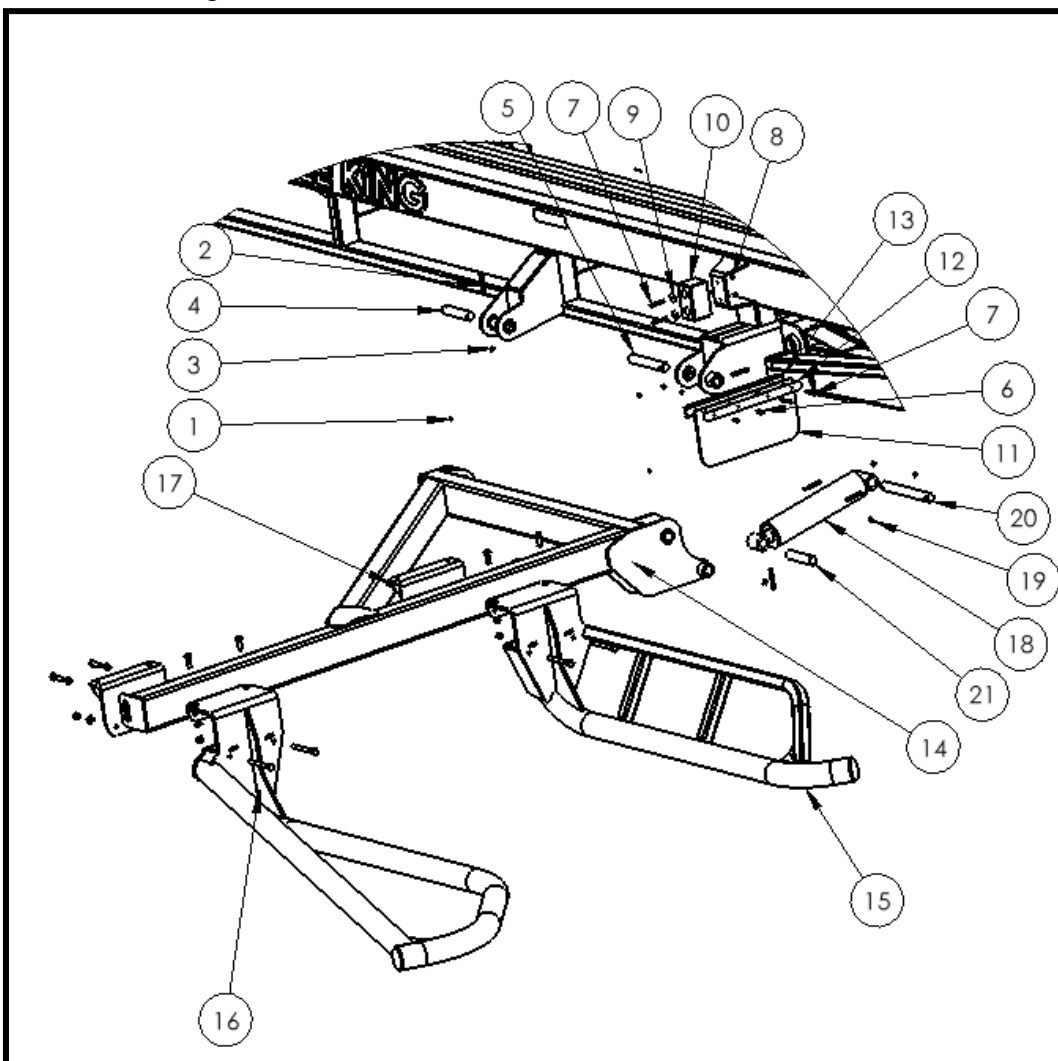


Item #	Description	ID number	QTY.
1	½” Nylon Lock Nut	10241	2
2	½” x 4” Bolt	23540	2
3	Tire 14L-16.1 SL	22851	2
	Option (Tire 16.5 L -16.1)	(12850)	(2)
	6500 lb Axle Spindle	29679	2
	9/16” x ¾” NF Wheel Stud	10347	16



### 3. Lifting Arm

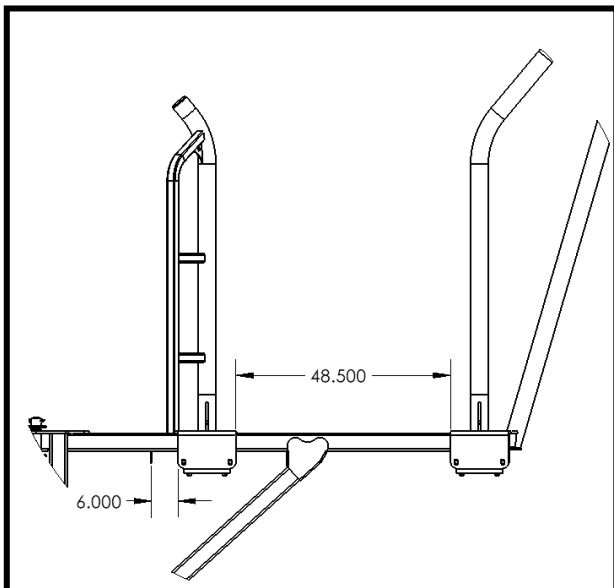
Install the lifting arm, inside fork tine, and outside fork tine.





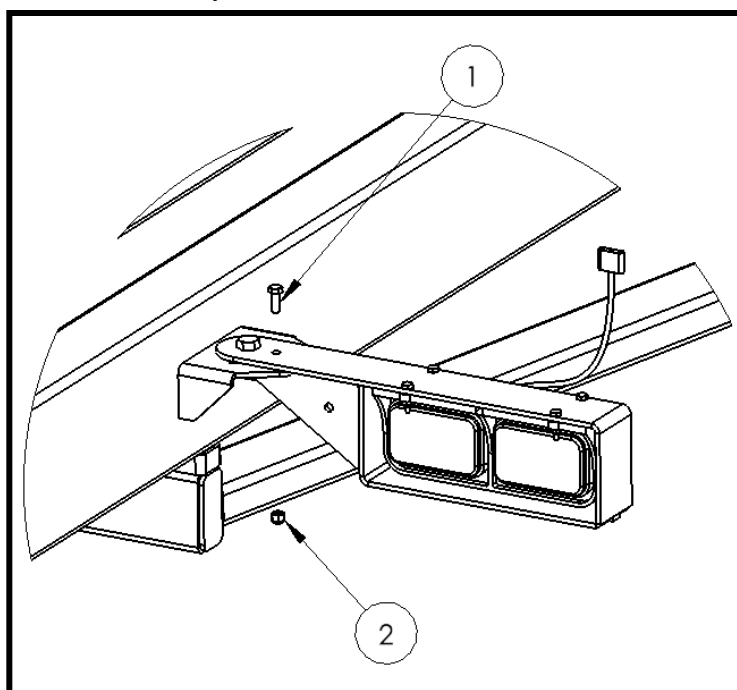
Item #	Description	ID number	QTY.
1	1/4" -28 Self Tapping Grease Zerk	16364	2
2	7/16" x 3" Bolt	21784	5
3	7/16" Nylon Lock Nut	10799	5
4	Side Arm Pin 6.25	27346	1
5	Side Arm Pin 9.625"	32041	1
6	3/8" x 1" Bolt	13806	2
7	3/8" x 2 1/2" Bolt	26307	4
8	3/8" Nylon Lock Nut	10806	6
9	3/8" Fender Washer	13773	2
10	Dock Bumper 6" x 3 1/2" x3 1/2"	34142	1
11	Mudflap	26303	1
12	Mudflap Bracket 1	26304	1
13	Mudflap Bracket 2	26305	1
14	Side Arm	27750	1
15	Inside Fork	34967	1
16	Outside Fork	34969	1
17	Fork Tine Clamp	34788	2
18	Hydraulic Cylinder (4 x 14 x 2 0 Deg)	24459	1
19	1/4" -28 Self Tapping Grease Zerk 90 Deg	16389	2
20	Side Arm Float Pin 12.375	34599	1
21	Side Arm Cylinder Pin 6.75	24131	1
22	5/8" x 2" Bolt Carriage	16361	4
23	5/8" Flat Washer	13975	8
24	5/8" Nylon Lock Nut	10364	8
25	5/8"x 6" UNC Bolt	34762	4
26	5/8" Hex Nut	10176	4
27	5/8" x 2 1/2" Bolt Full Thread	10008	4

Position the forks in desired position and tighten fasteners. Bridgeview Manufacturing recommends spacing the inside fork 6" from the inside stop and leave a gap of 48 1/2" between fork tines as an initial setting for 6' bales. The fork tines can later be adjusted to meet the operator's preferences.



#### 4. Rotate Lights

Rotate the lights out on the machine, as seen in the picture below. Remove the 3/8" x 1" Bolts and 3/8" Nylon Lock Nuts locking the rotation of the light brackets. Rotate light brackets so that the light bracket is perpendicular to the machine. Reinstall the 3/8" x 1" Bolts and 3/8" Nylon Lock Nuts.

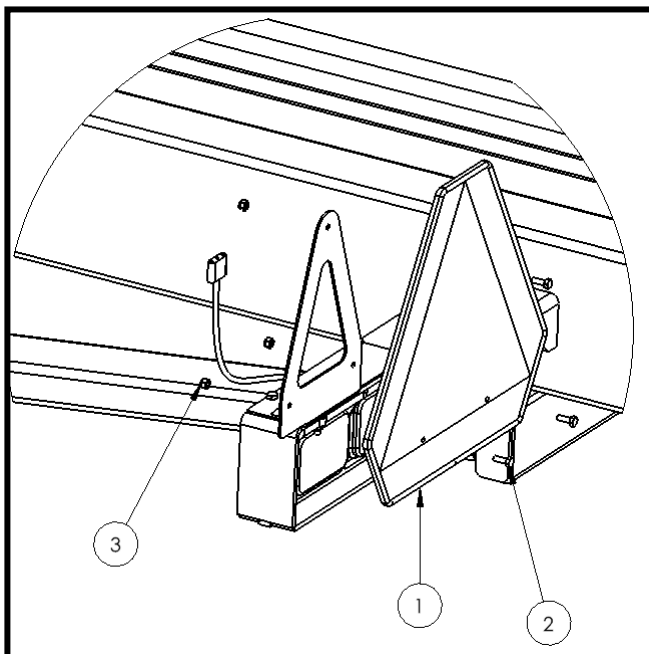


Item #	Description	ID number	QTY.
1	3/8" x 1" Bolt	13806	2
2	3/8" Nylon Lock Nut	10806	2



## 5. Install SMV Sign

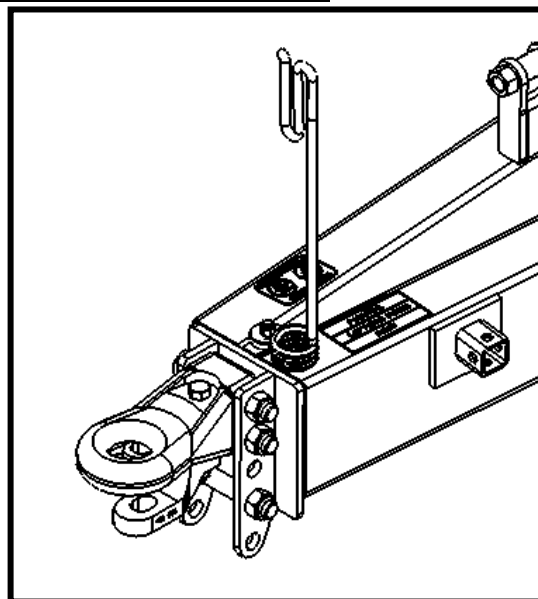
Install the SMV sign on top of the left light using  $\frac{1}{4}$ " x  $\frac{3}{4}$ " bolts and  $\frac{1}{4}$ " nylon lock nuts



Item #	Description	ID number	QTY.
1	SMV Sign Kit	22411	1
2	$\frac{1}{4}$ " x $\frac{3}{4}$ " Bolt	11809	3
3	$\frac{1}{4}$ " Nylon Lock Nut	17967	3

## 6. Rotate Hose Holder

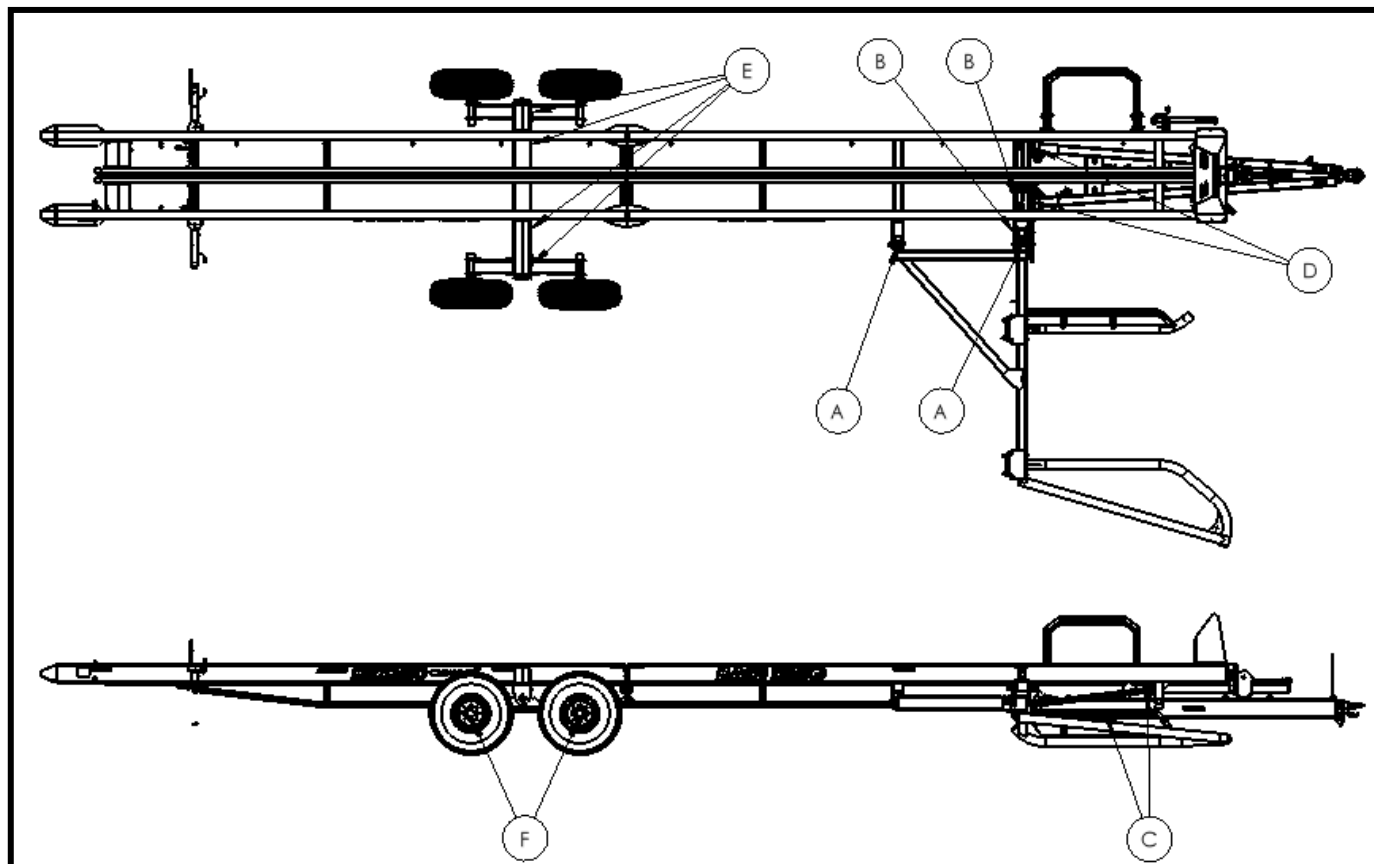
Rotate hose holder so it is orientated as shown below. Route hydraulic hoses and electrical wire through the hose holder.





## 7. Final Inspection

- Before operation, the machine should be checked over for any loose hardware, etc.
- Check that the Tire Pressure is 52 PSI (3.59 Bar) for the 14L -16.1 Tires or 36 PSI (2.48 Bar) for the 16.5L – 16.1 Tires. Check that the wheel studs are torqued to 125 ft lb (170 Nm).
- All grease fittings should be checked for accepting grease.



Check the functionality of the hydraulics:

- Deck Tilts up and down all the way with deck resting on the A Frame when it is lowered
- Arm lifts up and down
- pusher runs moves all the way along the deck and the hydraulic stops are functioning properly