

# PARTS MANUAL

## *BALE KING*

## *VORTEX 4000*



# BRIDGEVIEW

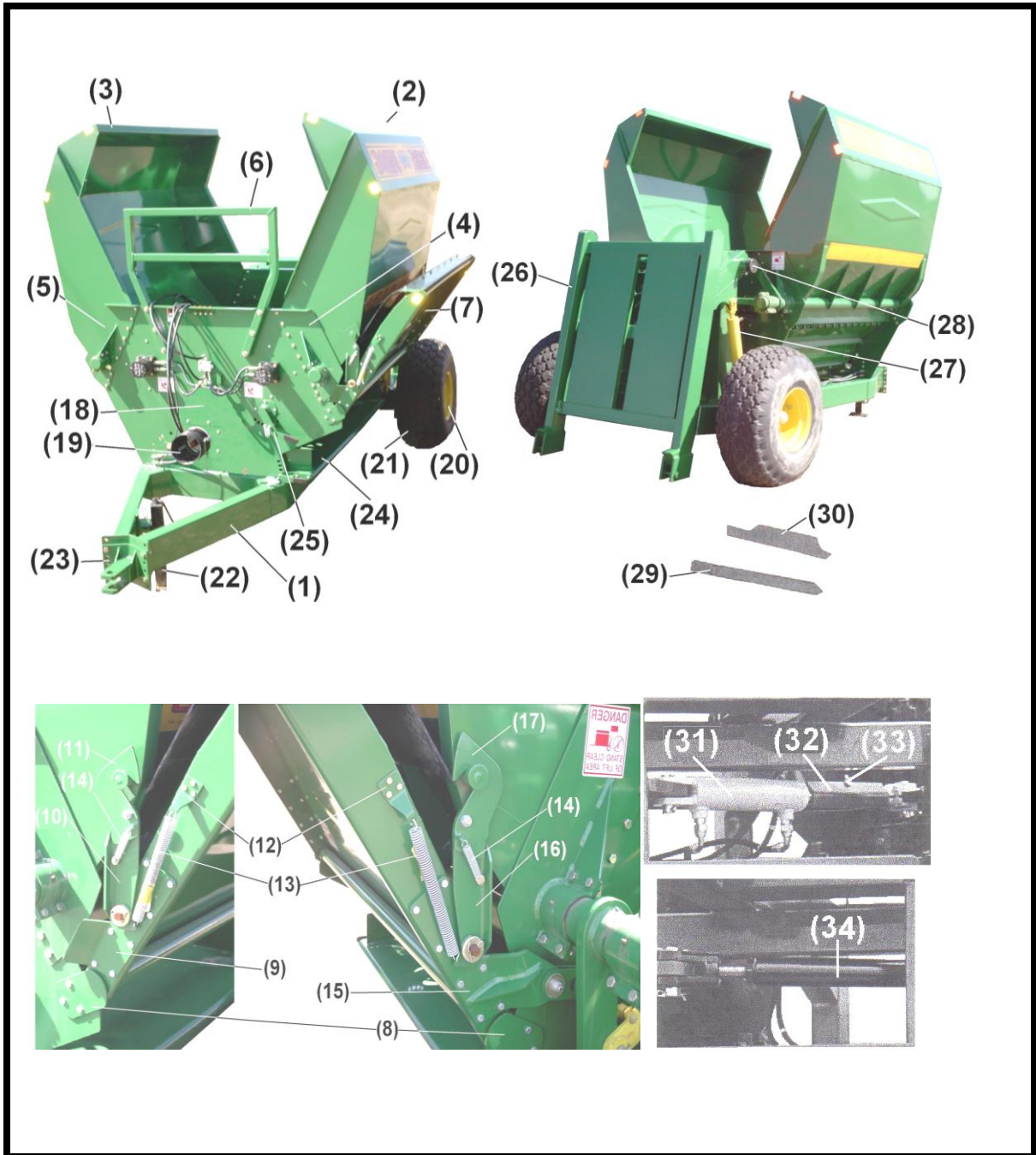
**MANUFACTURED BY:** BRIDGEVIEW MANUFACTURING INC.  
P.O. BOX 4  
GERALD, SASK. CANADA  
S0A 1B0  
*PHONE: (306) 745-2711*  
*FAX: (306) 745-3364*

# TABLE OF CONTENTS

## BALE KING VORTEX 4000

EXTERNAL PARTS AND CONTROLS.....	1 - 5
SWITCH.....	5A
HUB ASSEMBLY.....	6
PTO ASSEMBLIES.....	7 - 12
INNER TUB PARTS.....	13 - 14
HYDRAULIC ASSEMBLIES.....	15 - 18
HYDRAULIC SCHEMATICS.....	19 - 20
FINE CHOP OPTION (SIDE MOUNT).....	21
<b>MODELS WITH SERIAL # BK3681 AND BELOW</b>	
FINE CHOP OPTION (BOTTOM MOUNT).....	22
SPRING ASSISTED DEFLECTOR.....	23 - 24
HYDRAULIC SCHEMATICS.....	25 - 26
OPTIONAL ATTACHMENTS.....	27 - 28

# EXTERNAL PARTS AND CONTROLS



# EXTERNAL PARTS AND CONTROLS

## PARTS LIST

<u>Ref#</u>	<u>BMI#</u>	<u>Description</u>	<u>Qty.</u>
	<b>GREEN/YELLOW</b>		
1	N/A	Main Frame	1
2	16753	RH Wing	1
3	16754	LH Wing	1
4	16758	Wing Pivot (RH Front, LH Rear)	2
5	16757	Wing Pivot (LH Front, RH Rear)	2
Not Shown	10280	Grease Zerk	4
Not Shown	16765	Wing Pivot Clamp w/o Zerk Hole	4
Not Shown	14460	1/2" x 1" NC Bolt	52
Not Shown	10278	1/2" Serrated Flange Nut	52
Not Shown	16764	Wing Pivot Clamp w/Zerk Hole	2
Not Shown	10280	Grease Zerk	2
Not Shown	14460	1/2" x 1" NC Bolt	8
Not Shown	10278	1/2" Serrated Flange Nut	8
6	16756	Front Rack	1
Not Shown	15396	1/2" x 3" NC Bolt	6
Not Shown	13790	1/2" Flat Washer	6
Not Shown	10278	1/2" Serrated Flange Nut	6
7	11807 17822	Side Deflector	1
8	12815 17598	Deflector Mounts	2
Not Shown	13806	3/8" x 1" NC Bolt	6
Not Shown	11818	3/8" Serrated Flange Nut	6
9	16762	Mounting Plate for Deflector Hook (Front)	1
Not Shown	13806	3/8" x 1" NC Bolt	8
Not Shown	11818	3/8" Serrated Flange Nut	8
10	13375	Hook Bottom (Front)	1
Not Shown	13788	1/2" x 1 1/4" Carriage Bolt	1
Not Shown	16345	1/2" Fender Washer	1
Not Shown	14443	1/2" Locknut	1
Not Shown	10580	1/4" x 2" Cotter Pin	1
11	13377	Hook Top (Front)	1
12	16759 18915	Spring Clip	2
Not Shown	15404	1/4" x 3/4" NC Bolt	6
Not Shown	11812	1/4" Serrated Flange Nut	6
13	11787	Tension Spring	2
14	11788	Tension Spring	2
15	16763	Mounting Plate for Deflector Hook (Rear)	1
Not Shown	13806	3/8" x 1" NC Bolt	8
Not Shown	11818	3/8" Serrated Flange Nut	8
16	13373	Hook Bottom (Rear)	1

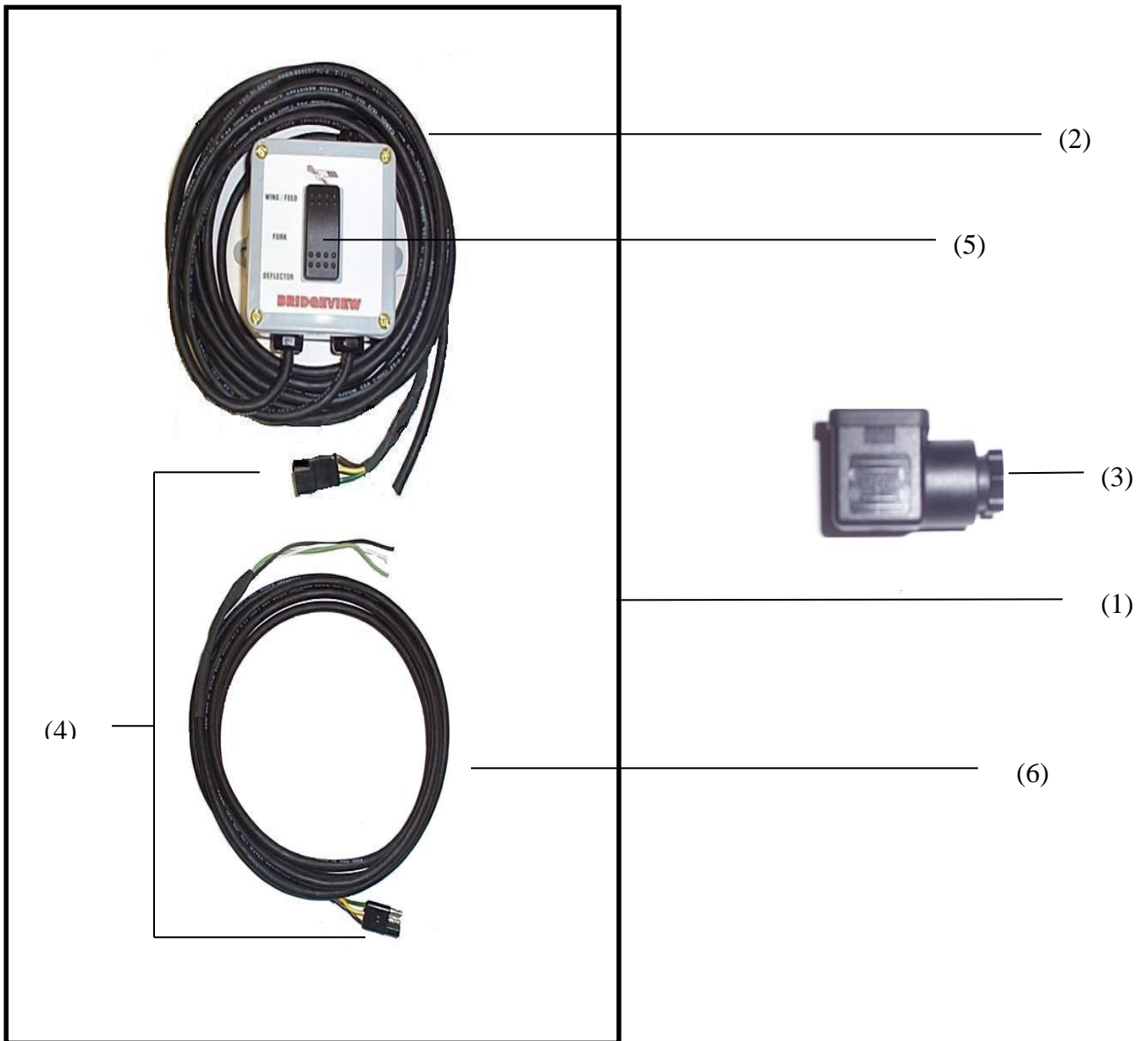
Not Shown	13788	1/2" x 1 1/4" Carriage Bolt	1
Not Shown	16345	1/2" Fender Washer	1
Not Shown	14443	1/2" Locknut	1
Not Shown	10580	1/4" x 2" Cotter Pin	1
Not Shown	13372	Slotted Bracket	2
Not Shown	13804	1/2" x 2" NC Bolt	1
Not Shown	14443	1/2" Locknut	1
Not Shown	10239	1/2" Bushing	2
Not Shown	16345	1/2" Fender Washer	2
Not Shown	16416	Rocker Arm (Bolt-on pivot)	1
Not Shown	13370	Rocker Arm (Weld-on pivot)	1
Not Shown	13804	1/2" x 2" NC Bolt	2
Not Shown	14443	1/2" Locknut	1
Not Shown	10239	1/2" Bushing	2
Not Shown	16345	1/2" Fender Washer	2
Not Shown	10580	1/4" x 2" Cotter Pin	1
Not Shown	16415	Rocker Arm Pivot	1
Not Shown	14460	1/2" x 1" NC Bolt	4
Not Shown	10278	1/2" Serrated Flange Nut	4
Not Shown	14472	1" Flat Washer	2
Not Shown	10580	1/4" x 2" Cotter Pin	1
Not Shown	10317 17442	Deflector Hydraulic Cylinder (See Page 18)	1
Not Shown	10801	1/2" x 3 1/2" NC Bolt	1
Not Shown	10516 17594	Deflector Cylinder Mount (Front Plate)	1
Not Shown	13806	3/8" x 1" NC Bolt	4
Not Shown	11818	3/8" Serrated Flange Nut	4
17	13376 20814	Hook Top	1
Not Shown	10288 17601	Channel Rubber Deflector	1
Not Shown	10477	Rubber Deflector 18"	1
Not Shown	13806	3/8" x 1" NC Bolt	8
Not Shown	13802	3/8" NC Locknut	8
18	12806 19435	Rotor Plate (Round Corners)	1
	10508	Rotor Plate (Square Corners)	1
Not Shown	14460	1/2" x 1"	8
Not Shown	10278	1/2" Serrated Flange Nut	8
19	10421	PTO Shield	1
Not Shown	13806	3/8" x 1" NC Bolt	4
Not Shown	13773	3/8" Flat Washer	4
Not Shown	13802	3/8" NC Locknut	4
20	10354	W14C x 16.1 8 – Rim - Yellow	2
21	10355	16L x 16.1 Tire	2
22	10458	Telescoping Jack	1
23	10281 19433	Hitch Assembly	1
Not Shown	13800	3/4" x 2" NC Bolt	4
Not Shown	13795	3/4" Lock Washer	4
Not Shown	12455	3/4" NC Nut	4

<b>24</b>	<b>10825 18538</b>	<b>Bottom Deflector</b>	<b>1</b>
Not Shown	<b>11662</b>	<b>5/16" x 3/4" Carriage Bolt</b>	<b>6</b>
Not Shown	<b>11815</b>	<b>5/16" Serrated Flange Nut</b>	<b>6</b>
Not Shown	<b>14461</b>	<b>1/2" x 1 1/2" NC Bolt</b>	<b>2</b>
Not Shown	<b>14443</b>	<b>1/2" NC Locknut</b>	<b>2</b>
Not Shown	<b>16345</b>	<b>1/2" Fender Washer</b>	<b>2</b>
Not Shown	<b>10239</b>	<b>Deflector Bushing</b>	<b>2</b>
Not Shown	<b>13806</b>	<b>3/8" x 1" NC Bolt</b>	<b>2</b>
Not Shown	<b>11818</b>	<b>3/8" Serrated Flange Nut</b>	<b>2</b>
Not Shown	<b>10231</b>	<b>Plated S-Handle</b>	<b>1</b>
Not Shown	<b>10301</b>	<b>Compression Spring</b>	<b>1</b>
Not Shown	<b>10302</b>	<b>Roll Pin</b>	<b>1</b>
Not Shown	<b>10297</b>	<b>Rubber Grip</b>	<b>1</b>
<b>25</b>	<b>10826 19434</b>	<b>Hoop Height Adjuster</b>	<b>1</b>
Not Shown	<b>13806</b>	<b>3/8" x 1" NC Bolt</b>	<b>4</b>
Not Shown	<b>11818</b>	<b>3/8" Serrated Flange Nut</b>	<b>4</b>
Not Shown	<b>10297</b>	<b>Rubber Handle Cover</b>	<b>1</b>
Not Shown	<b>10231</b>	<b>Plated S Handle</b>	<b>1</b>
Not Shown	<b>10301</b>	<b>Compression Spring</b>	<b>1</b>
Not Shown	<b>10302</b>	<b>Roll Pin</b>	<b>1</b>
<b>26</b>	<b>10578 19117</b>	<b>Rear Fork Frame</b>	<b>1</b>
Not Shown	<b>10579</b>	<b>Pivot Pipe</b>	<b>1</b>
Not Shown	<b>15411</b>	<b>1/2" x 4 3/4" NC Bolt</b>	<b>1</b>
Not Shown	<b>10278</b>	<b>1/2" NC Locknut</b>	<b>1</b>
Not Shown	<b>10280</b>	<b>1/4" Grease Zerk</b>	<b>2</b>
Not Shown	<b>10580</b>	<b>1/4" x 2" Cotter Pin</b>	<b>2</b>
<b>27</b>		<b>Fork Hydraulic Cylinder (See Page 15, 16)</b>	<b>2</b>
Not Shown	<b>10339</b>	<b>Butt End Cylinder</b>	<b>2</b>
Not Shown	<b>10341</b>	<b>Ram End Cylinder</b>	<b>2</b>
Not Shown	<b>10580</b>	<b>1/4" x 2" Cotter Pin</b>	<b>8</b>
Not Shown	<b>16640</b>	<b>Cylinder Safety Lock</b>	<b>1</b>
Not Shown	<b>12050</b>	<b>PTO Clip, Safety Lock</b>	<b>1</b>
<b>28</b>	<b>10504</b>	<b>3" Rubber Cap</b>	<b>2</b>
<b>29</b>	<b>10303 17606</b>	<b>Bale Tine</b>	<b>2</b>
<b>30</b>	<b>10234</b>	<b>Small Bale Tine (Optional)</b>	<b>2</b>
Not Shown	<b>10031</b>	<b>Headed Pin</b>	<b>2</b>
Not Shown	<b>10072</b>	<b>3/16" x 1 1/2" Cotter Pin</b>	<b>2</b>
<b>31</b>	<b>10559</b>	<b>Wing Hydraulic Cylinder (See Page 17)</b>	<b>1</b>
Not Shown	<b>10339</b>	<b>Cylinder Pin 2 3/8"</b>	<b>1</b>
Not Shown	<b>10341</b>	<b>Cylinder Pin 3"</b>	<b>1</b>
Not Shown	<b>10580</b>	<b>1/4" Cotter Pin</b>	<b>4</b>
<b>32</b>	<b>10585</b>	<b>Safety Stop (Wings)</b>	<b>1</b>
<b>33</b>	<b>10584</b>	<b>Quick Pin</b>	<b>1</b>
<b>34</b>	<b>10581</b>	<b>Wing Linkage</b>	<b>1</b>
Not Shown	<b>10341</b>	<b>Cylinder Pin 3"</b>	<b>2</b>
Not Shown	<b>10580</b>	<b>1/4" x 2" Cotter Pin</b>	<b>4</b>

Not Shown	16640	Cylinder Safety Lock	1
Not Shown	12050	PTO Clip, Safety Lock	1
Not Shown	11742	Splitter (See Page 19)	1
Not Shown	13761	1/4" x 2" NC Bolt	2
Not Shown	15402	1/4" NC Locknut	2
Not Shown	13763	1/4" Washer	2
Not Shown	11045	Hydraulic Motors (See Page 19)	2
Not Shown	11743	Diverter (See Page 19)	1
Not Shown	11783	5/16" x 3" Socket Head Bolt	2
Not Shown	15870	5/16" NC Locknut	2
Not Shown		Vortex Decals:	
	12190 17361	Bale King	2
	12188 17368	V4000	2
	12239	PIMA	1
	12520	Patent	1
Not Shown		Safety Decals:	
	12229	Danger Sign (Lift Area)	2
	12230	Danger Sign	4
	12219	Caution Sign	2
	12228	SMV	1
	13324	1 1/2" x 3" Amber Reflective Decal	5
	13325	1 1/2" x 3" Red Reflective Decal	5



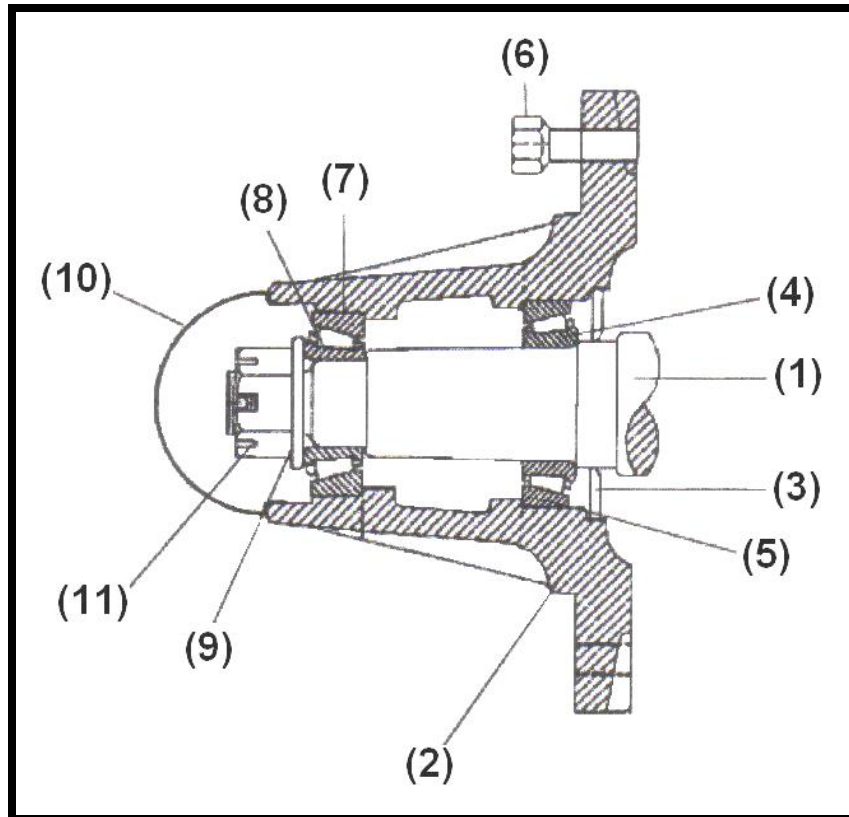




### PARTS LIST

<u>Ref #</u>	<u>BMI#</u>	<u>Description</u>	<u>Qty.</u>
1	11801	Complete control box with harness for 4000 series	1
2	11793	Control box complete with cab to hitch harness all 3000 & 4000 series	1
3	13657	Square plug for diverter valve	2
4	13562	3 pin trailer plug	1
5	13561	3 way switch	1
6	11802	Harness (hitch to valve) 4000 series	1

## HUB ASSEMBLY



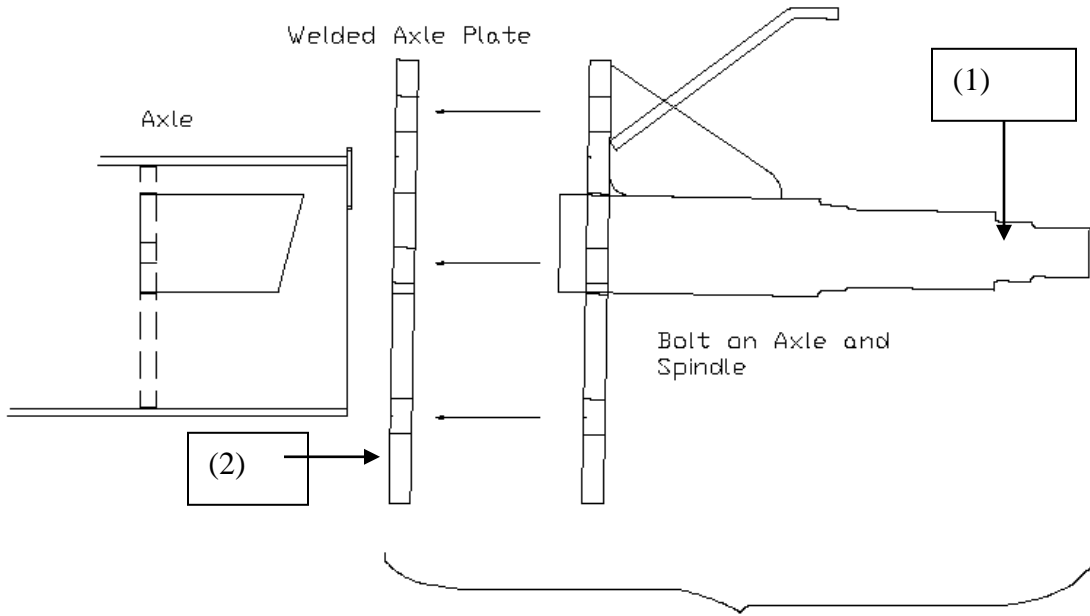
**Note: Axle Repair Next page**

## HUB ASSEMBLY

### PARTS LIST

<u>Ref#</u>	<u>BMI#</u>	<u>Description</u>	<u>Qty.</u>
1	10342	Spindle 2.25" x 15.5"	2
2	10343	Hub 6500 Series	2
3	10344	Dirt Seal	2
4	10345	Inner Bearing Cone(Big) LM25590	2
7	10346	Outer bearing Cup (Small race)LM25821	2
6	10347	9/16" x 1 3/4" NF Wheel Stud	16
8	10348	Outer Bearing Cone LM25877	2
5	10349	Outer Bearing Cup(race) LM25520	2
9	10071	1 1/16" x 2" Flat Washer	2
Not Shown	10072	3/16" x 1 1/2" Cotter Pin	2
10	10350	Dust Cap	2
11	10153	Castle Nut	2

# Axle Repair Kit



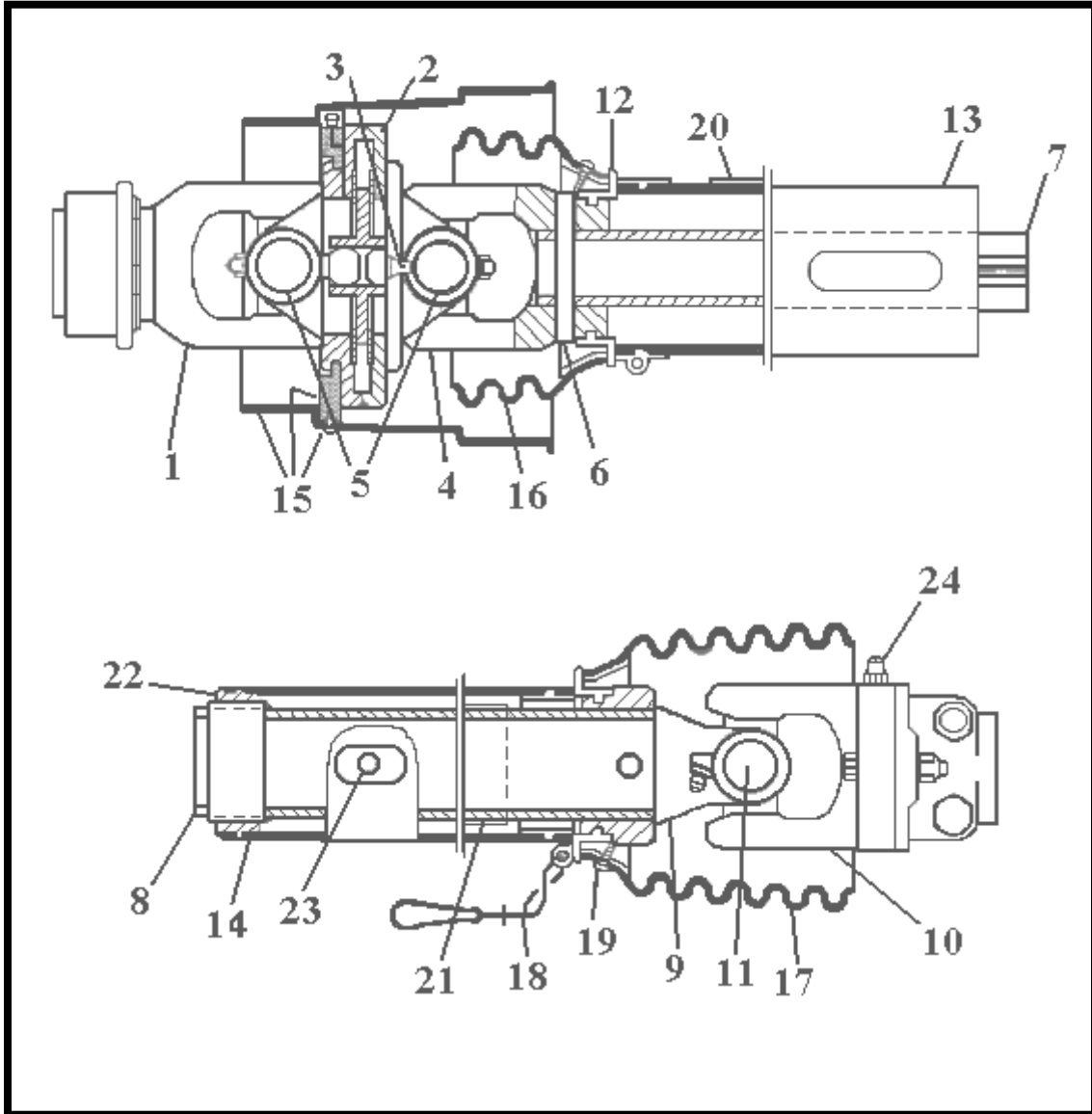
Kit

## Axle Repair Kit

### PARTS LIST

<u>Ref#</u>	<u>BMI#</u>	<u>Description</u>	<u>Qty.</u>
Kit	16993	Axle repair kit spindle	1
1	16807	17961 spindle assembly	1
2	N/A	weldment plate	1
Not Shown	13800	bolt $\frac{3}{4}$ x 2 NC	6
Not Shown	12455	Nut $\frac{3}{4}$ NC	6
Not Shown	13795	Lock Washer $\frac{3}{4}$	6

**PTO ASSEMBLY (WALTERSCHEID)  
#10087**



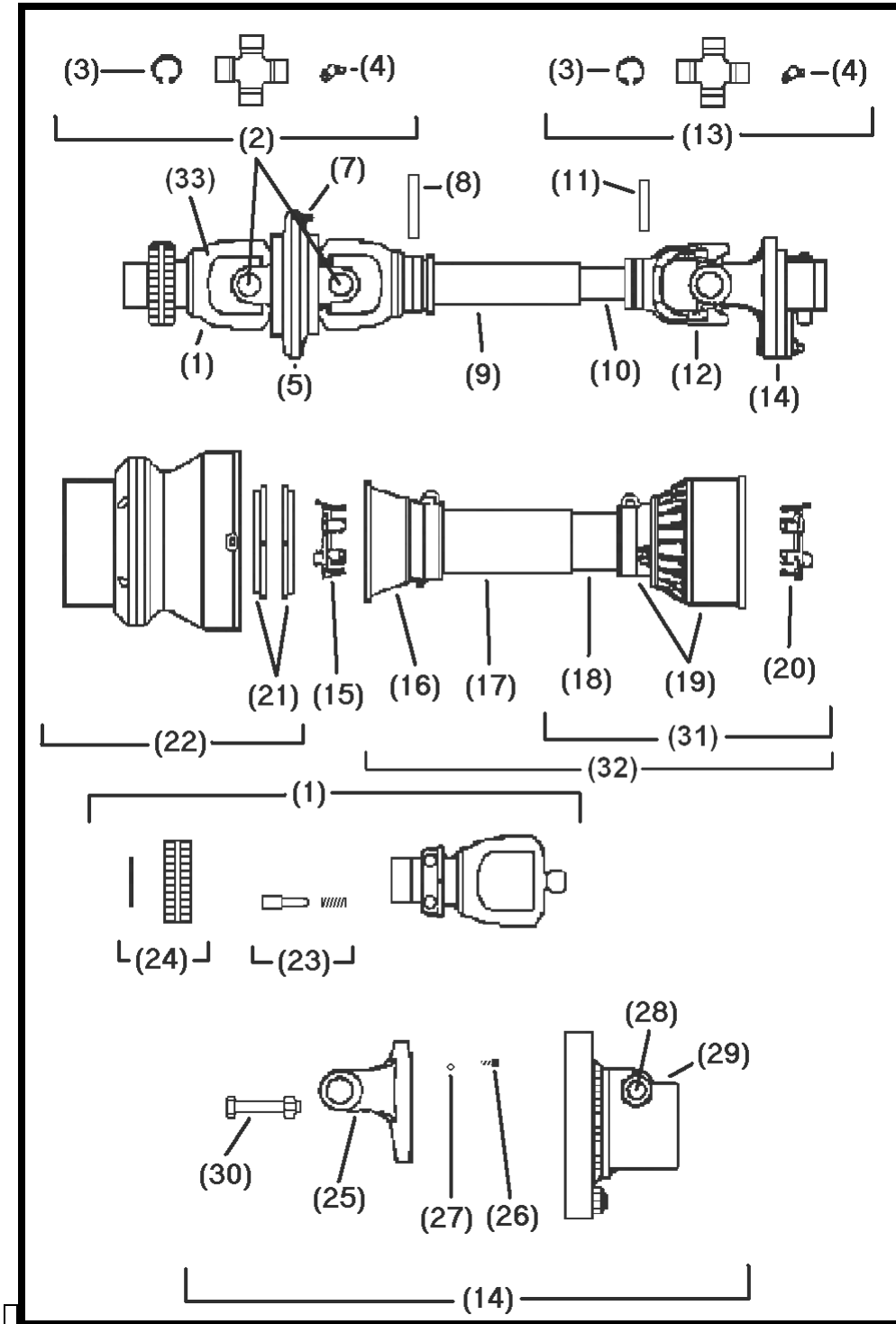
# PTO ASSEMBLY (WALTERSCHEID)

## PARTS LIST

<u>Ref#</u>	<u>BMI#</u>	<u>Description</u>	<u>Qty.</u>
	<b>GREEN/YELLOW</b>		
	<b>10087 17388</b>	<b>Complete PTO Assembly</b>	
1	10088	Yoke 1 3/8" – 21 SPL.	1
2	10090	Double Yoke	1
3	N/A	Grease Zerk (Included with item 2)	1
4	10091	Inboard Yoke 1b	1
5	10092	Cross and Bearing Kit	2
6	10093	Spring Pin	2
7	10095	Inner Profile 1bGA	1
8	10096	Profile and Sleeve W.A.	1
9	10097	Inboard Yoke 2a	1
10	10591	Shear Bolt Clutch	1
11	10094	Cross and Bearing Kit	1
12	10099	Bearing Ring SC25 Shield	2
13	10100	Outer Shield Tube, Oval Shield	1
14	10101	Inner Shield Tube, Oval Shield	1
15	10102	CV Cone and Bearing Assembly Shield	1
16	10103	Shield Cone 3 Rib	1
17	10104	Shield Cone 6 Rib	1
18	10105	Safety Chain	1
19	10108	Screw (Included with items 15, 16 ,17)	8
20	10106	Decal Outer (Included with item 13)	1
21	10107	Decal Inner (Included with item 8)	1
22	10109	Support Bearing	1
23	10110	Grease Zerk (Included with item 8)	1
24	10592	10mm Grease Zerk	10
Not Shown	10113	ASG. Col. Kit (Included with item 1)	1
Not Shown	10470	10mm x 60mm Shear Bolt	1
Not Shown	10471	10mm Locknut	1

**Walterscheid:** Identified by *Accordian Style* bell shield on machine end of PTO

# PTO ASSEMBLY (BONDIOLI) #10114

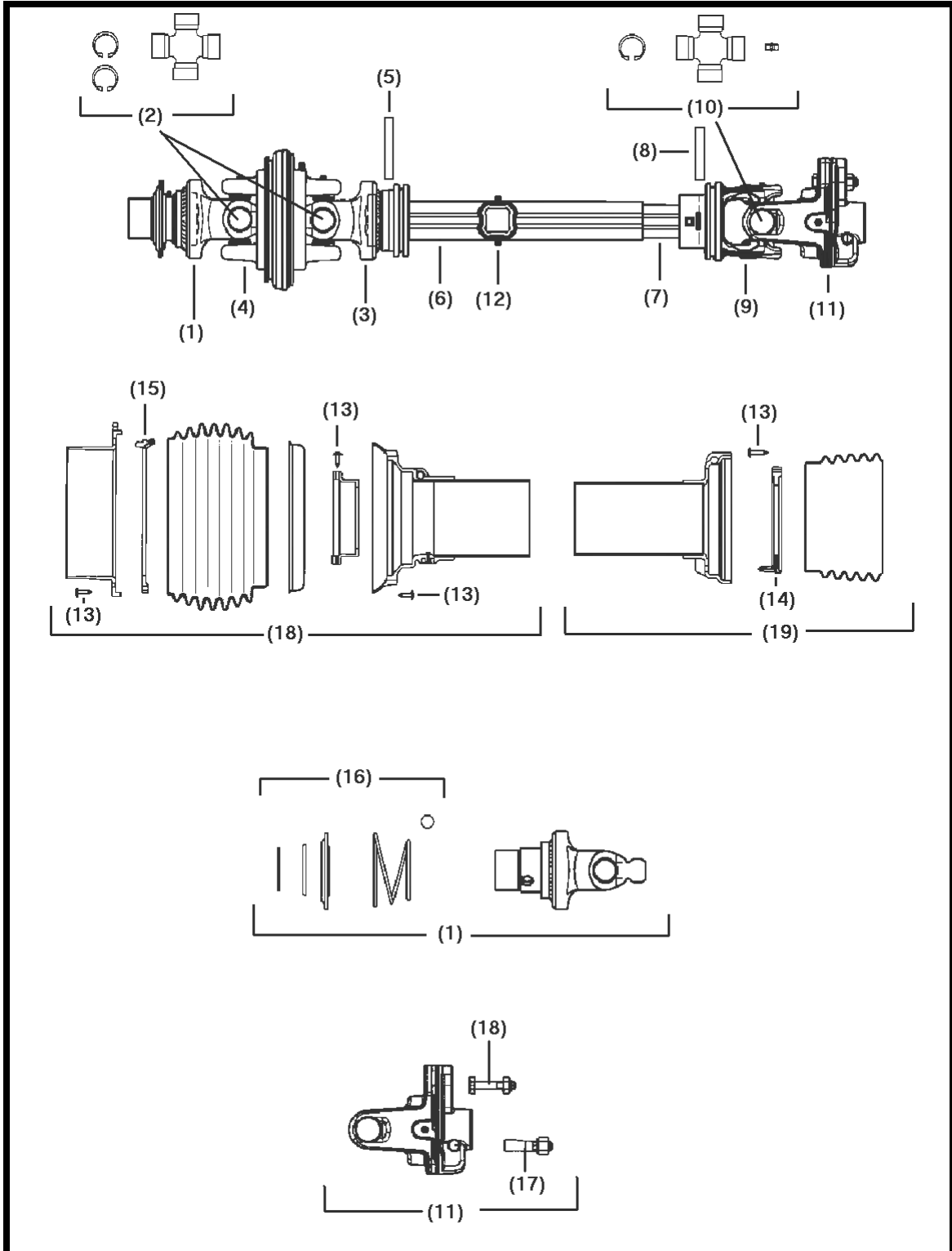


# PTO ASSEMBLY (BONDIOLI)

## PARTS LIST

<u>Ref#</u>	<u>BMI#</u>	<u>Description</u>	<u>Qty.</u>
	<b>GREEN/YELLOW</b>		
	10114 17388	Complete PTO Assembly	
1	10202	Yoke w/Bridge (Sliding Collar) 1 3/8"	1
2	10116	U-Joint Cross Kit	2
3	N/A	Circlip (Included with Cross Kit)	8
4	N/A	Grease Zerk (Included with Cross Kit)	2
5	10119	Central Body CV Joint	1
6	10120	Yoke	1
7	10121	Grease Zerk	1
8	10122	Roll Pin	1
9	10123	Cardan Tube	1
10	10124	Cardan Tube CM	1
11	10125	Roll Pin	1
12	10126	Inner Tube Yoke	1
13	10127	U-Joint Cross Kit	1
14	13703	Torque Limiter (Quick Pin Style)	1
15	10129	Shield Support 6-7	1
16	10130	Safety Cone	1
17	10131	CM Safety Tube	1
18	10132	SM Safety Tube	1
19	10133	I Cone Sets F5-6-7	1
20	10134	Shield Support 6-7	1
21	10135	Ring Nut Dowell	1
22	10136	Complete Shell	1
23	10137	Complete Push Bottom	1
24	10138	Hub	1
25	N/A	Yoke (Included w/item 13703)	1
26	10140	Grease Zerk	1
27	10141	Ball 5/16	1
28	N/A	Nut Sold with Item #29	1
29	10406	Wedge Lock on machine Yoke	1
30	10407	Shear Bolt (Pkg. of 5)	1
31	10150	Half Shaft Shield (Impl. end)	1
32	10151	Safety Shield – Complete	1
33	10152	Yoke 1 3/4" 20-Spline	1

# PTO ASSEMBLY (BONDIOLI) #12574



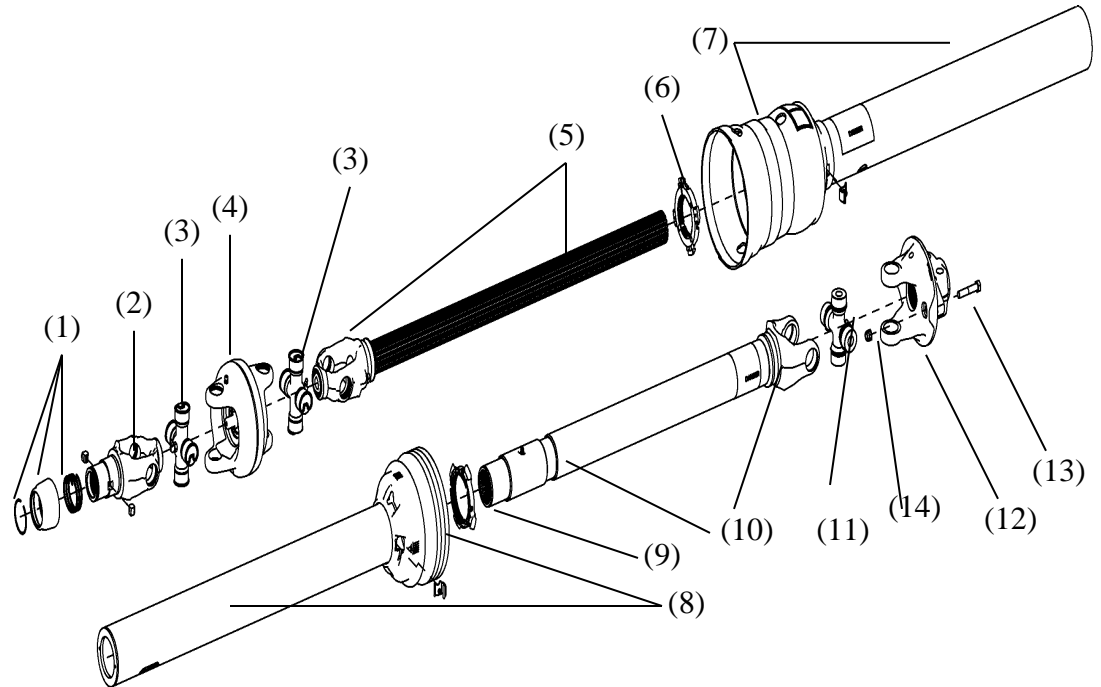


# PTO ASSEMBLY (BONDIOLI)

## PARTS LIST

<u>Ref#</u>	<u>BMI#</u>	<u>Description</u>	<u>Qty.</u>
	<b>GRTEEN/YELLOW</b>		
	<b>12574 17388</b>	<b>Complete PTO Assembly</b>	
1	13564	Yoke	1
2	13563	U-Joint Cross Kit	2
3	13568	Yoke	1
4	13565	CV Body	1
5	10122	Flexible Pin	1
6	13566	Cardan Tube	1
7	13567	Inner Cardan Tube	1
8	10125	Flexible Pin	1
9	13569	Yoke	1
10	13022	U-Joint Cross Kit	1
11	13570	LB Torque Limiter	1
12	13571	Grease Zerk	2
13	13572	Shield Screw	17
14	13609	Ring for Inner Cone	1
15	13610	Laufring for Front CV	1
16	13575	Lock Assembly Front CV	1
17	13577	Wedge Lock	1
18	13576	Shear Bolt	1
19	13573	Shield Assembly – Outer	1
20	13574	Shield Assembly – Inner	1

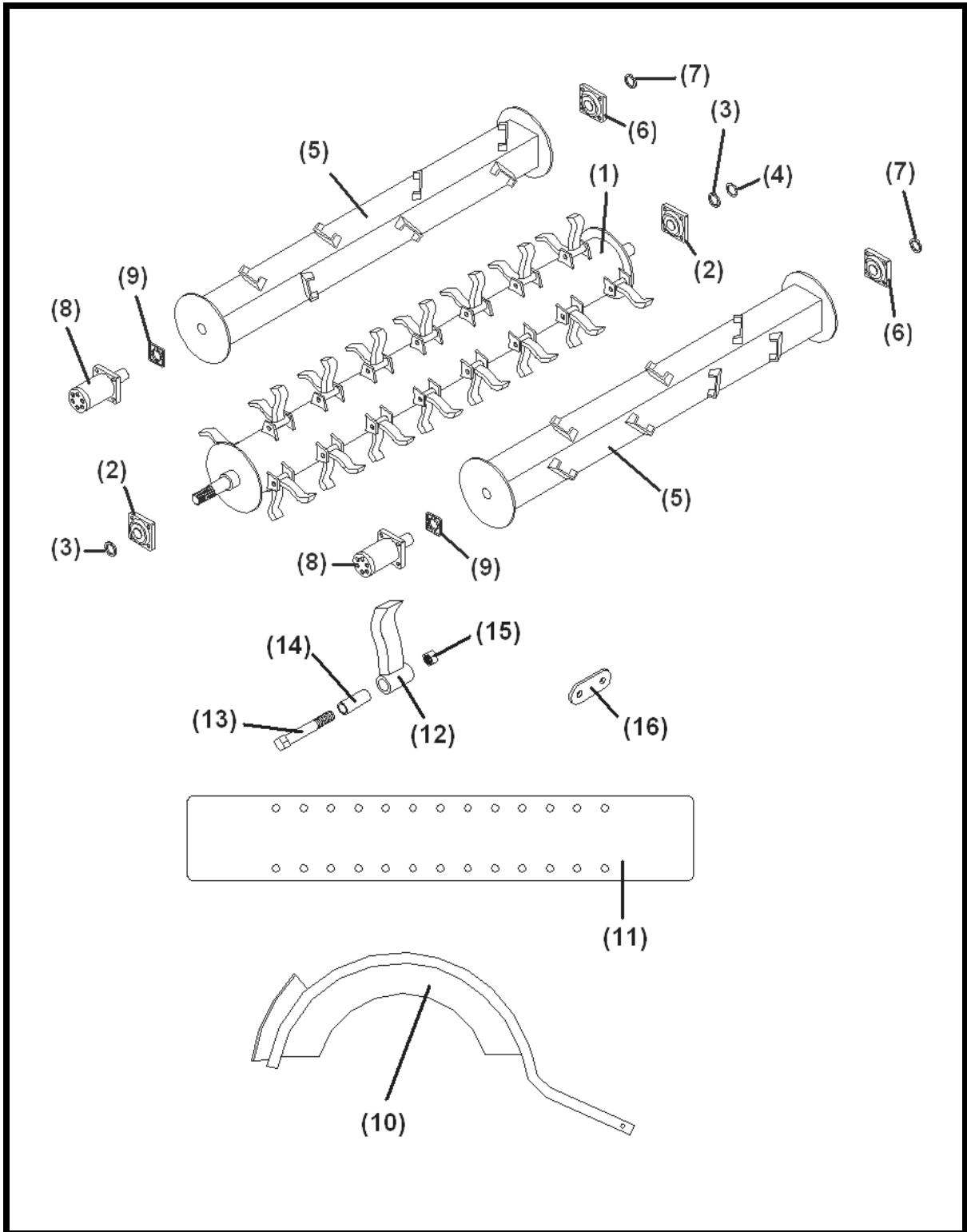
## Weasler PTO SHAFT 17388



### PTO ASSEMBLY ( WEASLER )

<u>Ref #</u>	<u>BMI #</u>	<u>Decription</u>	<u>Qty.</u>
	17388	Complete PTO Assembly	1
1	17567	Safety Slide Lock Repair Kit	1
2	17568	Safety Slide Lock Yoke 1 3/8- 21 spline	1
3	17569	CV Cross & Bearing Kit	2
4	17570	CV Center Housing	1
5	17582	Yoke & Shaft Assy. Tractor Side	1
6	17571	Guard Repair Kit Tractor Side	1
7	17583	Outer Guard Assy Tractor Side ( Item #6 incl)	1
8	17585	Inner Guard Assy Impl. Side ( Item #9 incl)	1
9	17572	Guard Repair Kit Impl. Side	1
10	17584	Yoke & Tube Assy Impl. Side	1
11	17573	Cross & Bearing Kit	1
12	17581	Shear Assy.	1
13	11817	Shear Bolt 3/8 X 2 NC	1
14	17586	Nut 3/8 Lock Nut	1
15	17886	Safety Slide Lock Yoke Assy. 1 3/4 - 20 Spline	1

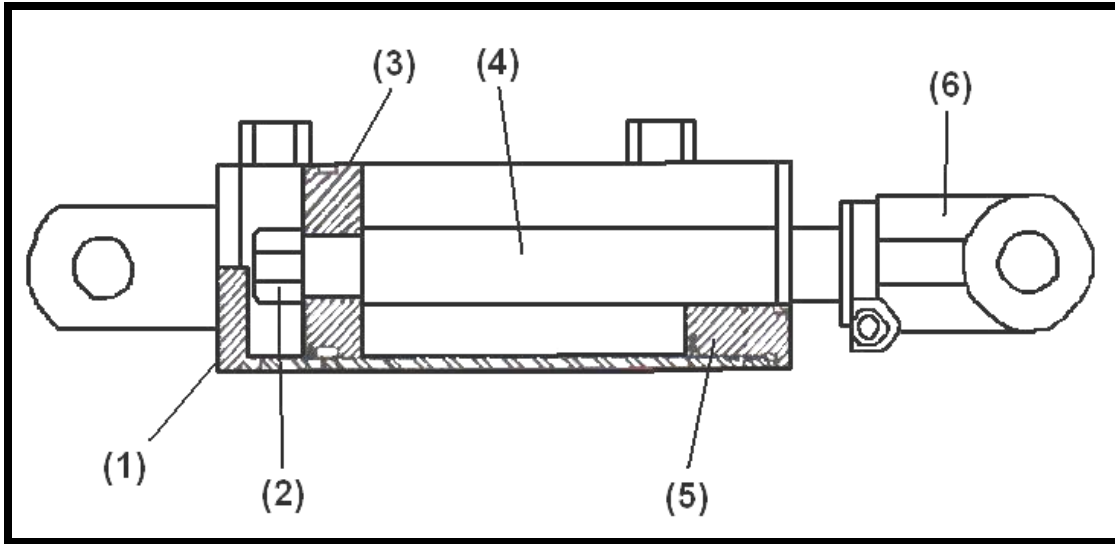
# INNER TUB PARTS



## INNER TUB PARTS PARTS LIST

<u>Ref#</u>	<u>BMI#</u>	<u>Description</u>	<u>Qty.</u>
1	10260 17401	Rotor	1
2	10221	1 15/16" Rotor Bearings	2
Not Shown	10270	1/8" NPT Grease Zerk	2
Not Shown	10274	5/8" x 1 3/4" NF Bolt	8
Not Shown	15398	5/8" Flange Locknut	8
Not Shown	10272	Rotor Twine Guard	2
Not Shown	10229 17602	Beater Twine Guard	4
Not Shown	13806	3/8" x 1" NC Bolt	20
Not Shown	11818	3/8" Serrated Flange Nut	22
Not Shown	13768	3/8" x 1 1/4" NC Bolt	2
Not Shown	13772	3/8" Flat Washer	2
Not Shown	13802	3/8" Locknut	2
3	10268	1 15/16" Lock Collar	2
4	10227	Split Collar	1
5	12802 17603	Beaters	2
6	10038	1 3/4" Bearings (Beaters)	2
Not Shown	10270	1/8" NPT Grease Zerk	2
Not Shown	14461	1/2" x 1 1/2" NC Bolt	8
Not Shown	10278	1/2" Serrated Flange Nut	8
7	10040	1 3/4" Lock Collar	2
8	10045	Hydraulic Beater Motors	2
Not Shown	10172	1/2" x 2 1/2" NC Socket Head bolt	8
Not Shown	10183	1/2" Lock Washer	8
Not Shown	10278	1/2" NC Serrated Flange Nut	8
9	10021	Coupler Assembly	2
10	10463 17604	Hoop	14
Not Shown	13769	3/8" x 2 1/4" NC Bolt	11
Not Shown	13802	3/8" NC Locknut	11
Not Shown	13806	3/8" x 1" NC Bolt	22
Not Shown	13802	3/8" NC Locknut	22
11	10514 17605	Charging Panel	1
12	10223 17460	Flail (Replace in Pairs)	30
13	10443	Shoulder Bolt	30
14	10005	Flail Bushing	30
15	10007	3/4" NC Locknut	30
16	10513 19431	Hoop Adjustment Shackle	2
Not Shown	14461	1/2" x 1 1/2" NC Bolt	4
Not Shown	16345	1/2" Fender Washer	4
Not Shown	10239	1/2" Bushing	4
Not Shown	14443	1/2" NC Locknut	4

## HYDRAULIC CYLINDER (FORKS) 1 1/4" SHAFT

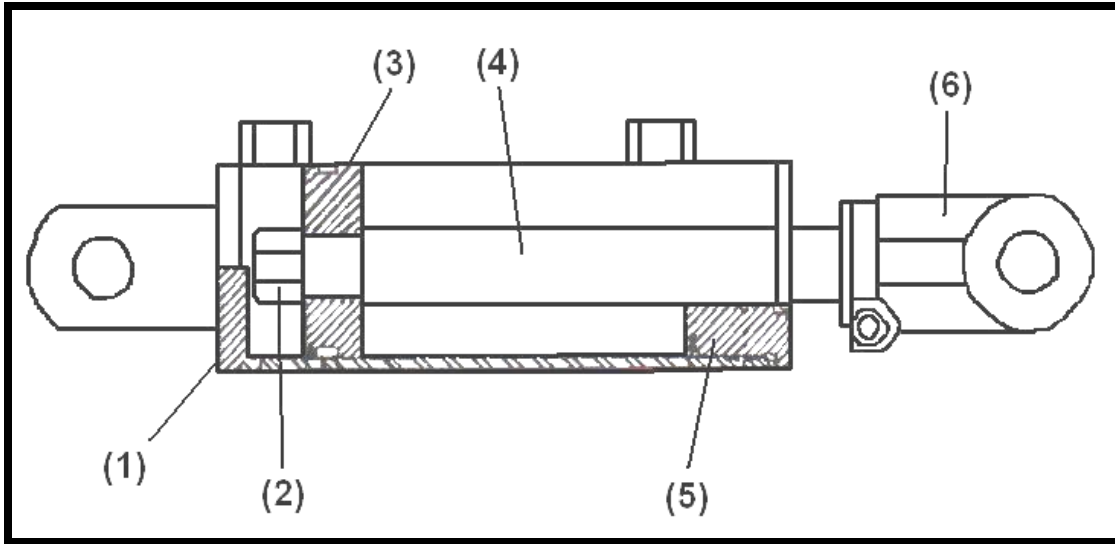


## HYDRAULIC CYLINDER (FORKS) 1 1/4" SHAFT

### PARTS LIST

<u>Ref#</u>	<u>BMI#/HY-SPEC#</u>	<u>Description</u>	<u>Qty.</u>
	10528 17444	Hydraulic Cylinder Assembly	
1	10535	Barrel Assembly w/Clevis	1
2	10062	Locknut Piston Rod	1
3	10536	Piston 3" Dia.	1
4	10537 17612	Cylinder Shaft	1
5	10538	Gland	1
6	10061 N/A	Clevis	
Not Shown	10539 17611	Seal Kit	1

## HYDRAULIC CYLINDER (FORKS) 1 1/2" SHAFT

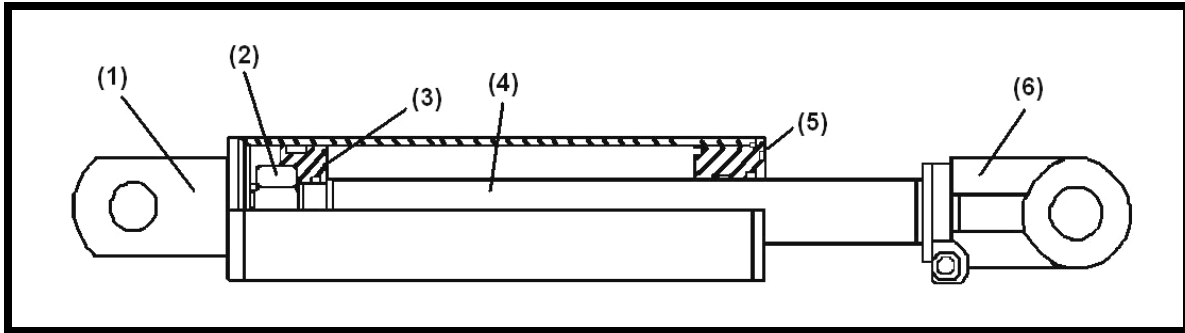


## HYDRAULIC CYLINDER (FORKS) 1 1/2" SHAFT

### PARTS LIST

<u>Ref#</u>	<u>BMI#/HY-SPEC#</u>	<u>Description</u>	<u>Qty.</u>
	12865 17444	Hydraulic Cylinder Assembly	
1	10535	Barrel Assembly w/Clevis	1
2	10062	Locknut Piston Rod	1
3	12875	Piston	1
4	12873	Cylinder Shaft	1
5	12874 N/A	Gland	1
6	10061	Clevis	1
Not Shown	12872 17611	Seal Kit	1

## HYDRAULIC CYLINDER (WINGS)

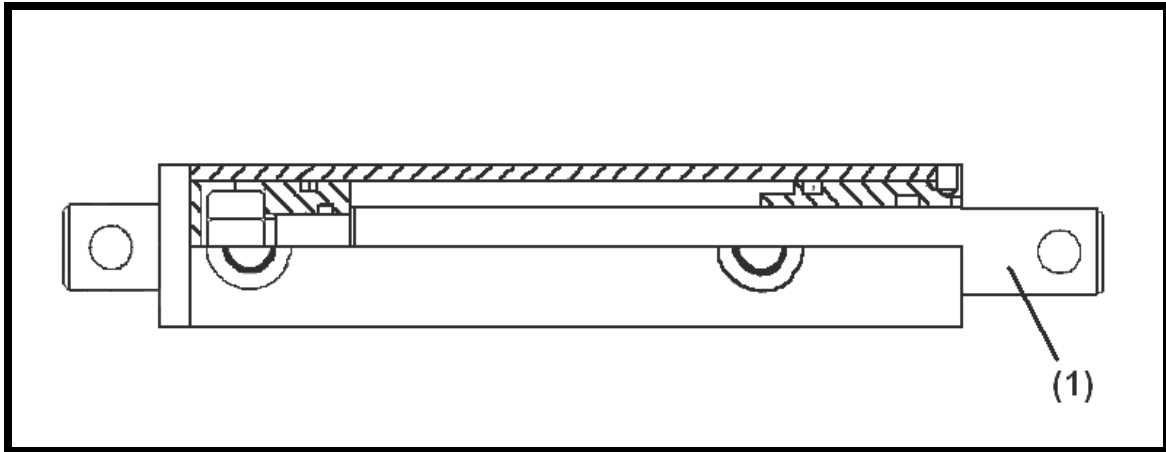


## HYDRAULIC CYLINDER (WINGS)

### PARTS LIST

<u>Ref#</u>	<u>BMI#</u>	<u>Description</u>	<u>Qty.</u>
	10559	Hydraulic Cylinder Assembly	1
1	10589	Barrel Assembly	1
2	10062	Locknut	1
3	10519	Piston	1
4	10590	Shaft, 2.5" x 8"	1
5	10060	Gland	1
6	10061	Clevis	1
Not Shown	10521	Seal Kit	1

## HYDRAULIC CYLINDER (DEFLECTOR)



## HYDRAULIC CYLINDER (DEFLECTOR)

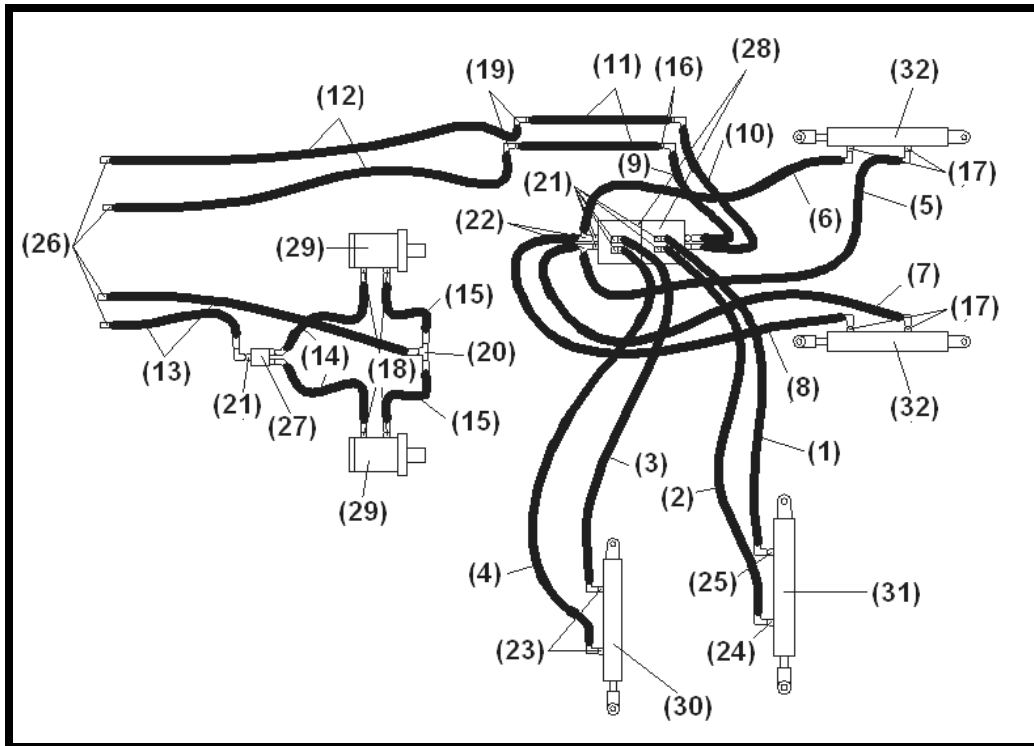
### PARTS LIST

<u>Ref#</u>	<u>BMI#/HY-SPEC#</u>	<u>Description</u>	<u>Qty.</u>
	10317 17442	Hydraulic Cylinder Assembly	1
1	16746 17614	1" Cylinder Shaft	1
Not Shown	10318 17613	Seal Kit	1

**NOTE: UNKNOWN SERIAL NUMBER BREAKS**



## HYDRAULIC SCHEMATICS



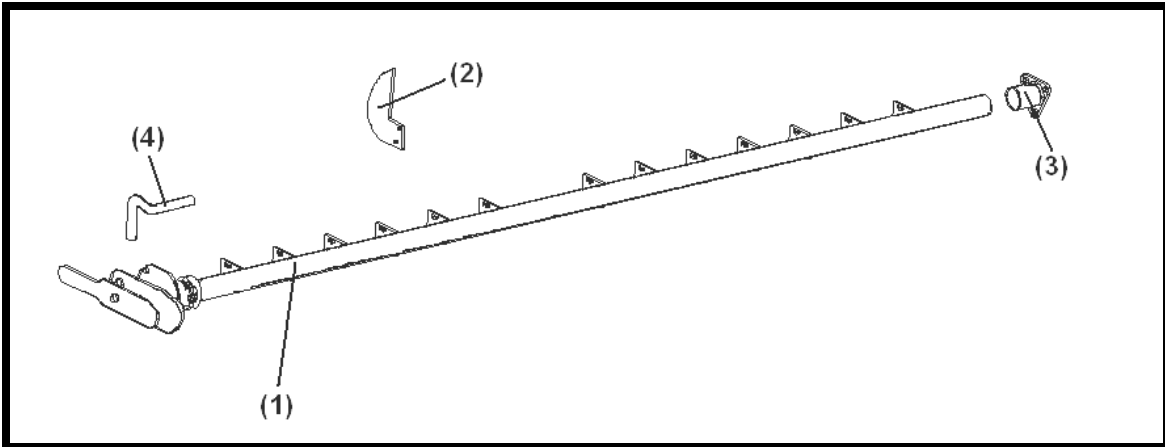
## HYDRAULIC SCHEMATICS

### PARTS LIST

<u>Ref#</u>	<u>BMI#</u>	<u>Description</u>	<u>Qty.</u>
1	11757	Hose - 28" OAL 6FJX90 - 8FJX90	1
2	11758	Hose - 32" OAL 6FJX90 - 8FJX90	1
3	11759	Hose - 28" OAL 6FJX90 - 8FJX90	1
4	11760	Hose - 32" OAL 6FJX90 - 6FJX90	1
5	11761	Hose - 52" OAL 6FJX - 8FJX90	1
6	11762	Hose - 67" OAL 6FJX90 - 8FJX90	1
7	11763	Hose - 32" OAL 6FJX - 8FJX90	1
8	16755	Hose - 25" OAL 6FJX - 8FJX90	1
9	11765	Hose - 20" OAL 6FJX90 - 6FJX	1
10	11766	Hose - 23" OAL 6FJX90 - 6FJX	1
11	10190	Hose - 80" OAL 6FJX - 6FJX	2
12	10195	Hose - 120" OAL 6FJX - 8MP	2
13	11727	Hose - 102" OAL 6FJX90 - 8MP	2
14	11726	Hose - 21" OAL 6FJX45 - 8FJX	2
15	11724	Hose - 17" OAL 6FJX - 8FJX	2
16	11767	Adapter - 6MJ - 6MJBH	2

17	11740	Adapter – 8MB – 6MJ	6
18	10161	Adapter – 8MB – 6MJ	6
19	10187	Adapter – 6MJ – 6MJ90BH	2
20	10188	Adapter – 6MJBH – 6MJT	2
21	11739	Adapter – 10MB – 6MJ	7
22	11768	Adapter – 8FJXR – 8MJT	2
23	10162	Adapter – 6MB – 6MJ	2
24	10561	Adapter – 8MB – 8MJ	1
25	10562	1/32” Orifice – 8MB – 8MJ	1
26	10167 17379	Pioneer Tips	4
27	11742	Splitter	1
28	11743	Diverter	2
29	10045	Hydraulic Beater Motors	2
Not Shown	10048	Seal Kit	1
30	10317 17442	Deflector Hydraulic Cylinder (See Page 18)	1
31	10559	Wing Hydraulic Cylinder	1
32		Fork Hydraulic Cylinder (See Page 15, 16)	2

## FINE CHOP OPTION (SIDE MOUNT)



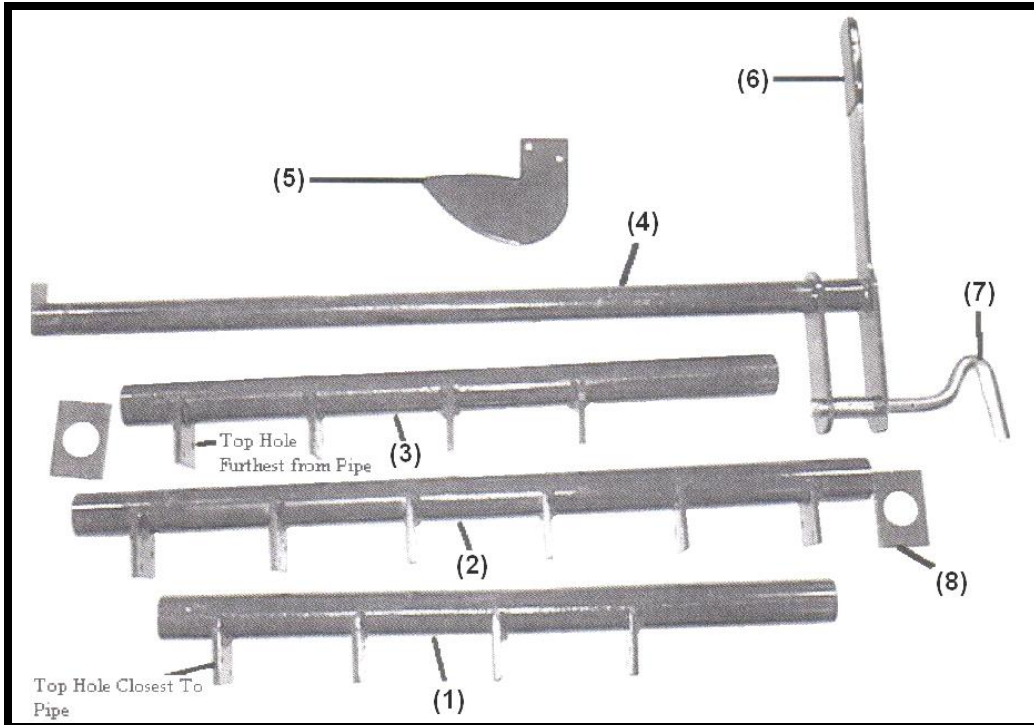
## FINE CHOP OPTION (SIDE MOUNT)

### PARTS LIST

<u>Ref#</u>	<u>BMI#</u>	<u>Description</u>	<u>Qty.</u>
<b>GREEN/YELLOW</b>			
	12499 17398	Fine Chop Option (Side Mount)	
1	11771 17409	Handle and Pipe Assembly	1
2	10404	Knife	14
Not Shown	11810	1/4" x 1" NC Bolts	28
Not Shown	15402	1/4" NC Locknut	28
3	13450 17410	Sleeve Bracket	1
Not Shown	13806	3/8" x 1" NC Bolt	7
Not Shown	11818	3/8" Serrated Flange Nut	7
4	10231	Plated Handle	1
Not Shown	10297	Rubber Handle	1
Not Shown	10302	3/16" x 1 1/4" Roll Pin	1
Not Shown	10301	Compression Spring	1
Not Shown	12792	Split Collar	1

## MODELS WITH SERIAL # BK3681 AND BELOW

### FINE CHOP OPTION (BOTTOM MOUNT)

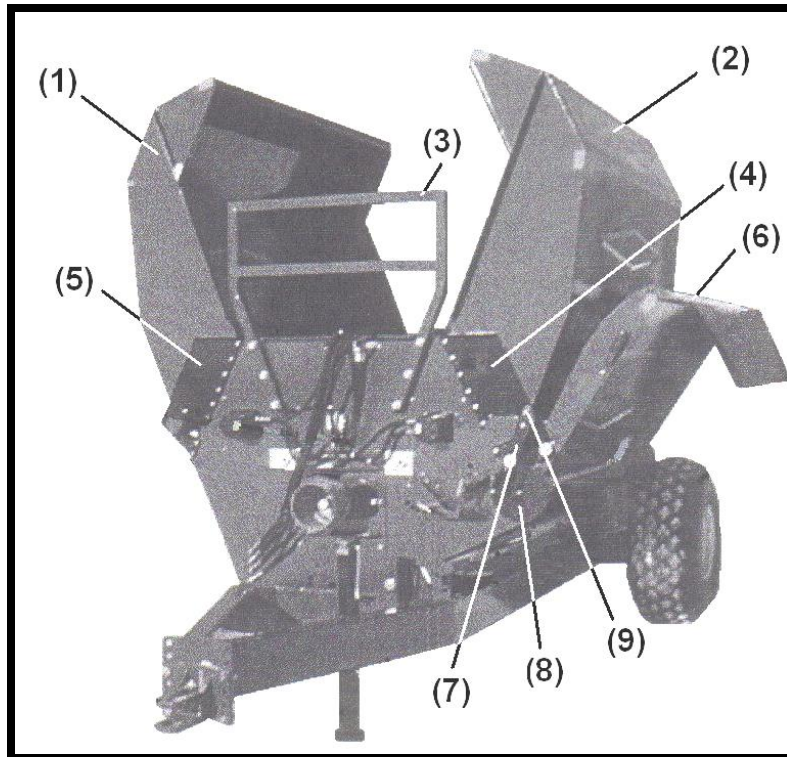


### FINE CHOP OPTION (BOTTOM MOUNT)

#### PARTS LIST

<u>Ref#</u>	<u>BMI#</u>	<u>Description</u>	<u>Qty.</u>
1	10525	End Knife Holder	1
2	10526	Middle Knife Holder	1
3	10527	End Knife Holder	1
4	10523	Handle w/Pipe	1
5	10404	Knife	14
6	10297	Rubber Handle	1
7	10231	Plated Handle	1
Not Shown	10302	3/16" x 1 1/4" Roll Pin	1
8	10524	Rectangular Spacer	2
Not Shown	10301	Compression Spring	1
Not Shown	13806	3/8" x 1" NC Bolt	4
Not Shown	13802	3/8" NC Locknut	4
Not Shown	11810	1/4" x 1" NC Bolt	28
Not Shown	15402	1/4" NC Locknut	28

## SPRING ASSISTED DEFLECTOR



## SPRING ASSISTED DEFLECTOR

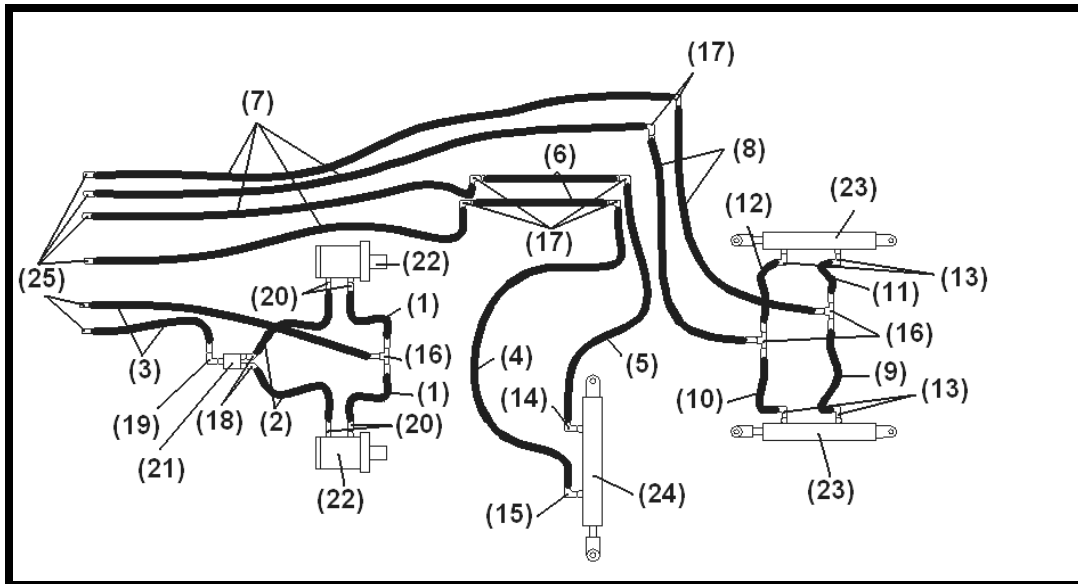
### PARTS LIST

<u>Ref#</u>	<u>BMI#</u>	<u>Description</u>	<u>Qty.</u>
1	10565	LH Wing Assembly	1
2	10566	RH Wing Assembly	1
3	10571	Front Rack	1
Not Shown	15396	1/2" x 3" NC Bolt	6
Not Shown	13790	1/2" Flat Washer	6
Not Shown	10278	1/2" Serrated Flange Nut	6
4	10567	Wing Pivot (RH Front & LH Rear)	2
5	10568	Wing Pivot (LH Front w/Cylinder Bracket)	1
Not Shown	10569	Wing Pivot (RH Rear)	1
6	10574	Side Deflector	1
Not Shown	12815	Deflector Mounts	2
Not Shown	13806	3/8" x 1" NC Bolt	6
Not Shown	13772	3/8" Flat Washer	6
Not Shown	11818	3/8" Serrated Flange Nut	6
Not Shown	10296	Flat Rubber Grip	1

Not Shown	10509	Handle Side Deflector	1
Not Shown	13806	3/8" x 1" NC Bolt	2
Not shown	13802	3/8" Locknut	2
7	10577	Slide Linkage	4
Not Shown	13804	1/2" x 2" NC Bolt	2
Not Shown	14443	1/2" Locknut	2
Not Shown	10239	1/2" Bushing	2
Not Shown	16345	1/2" Fender Washer	2
8	10474	Spring Plate	2
Not Shown	14461	1/2" x 1 1/2" NC Bolt	2
Not Shown	15403	1/2" x 1 3/4" NC Bolt	2
Not Shown	16345	1/2" Fender Washer	2
Not Shown	10239	Bushing 1/2" x 1 1/4"	2
Not Shown	10757	Spring Bushing 9/16"ID x 2"OD x 5/8"W	2
Not Shown	10507	Spacer 5/8" x 3/4" x 1/2"	2
Not Shown	14443	1/2" NC Locknut	2
Not Shown	10278	1/2" Serrated Flange Nut	2
Not Shown	10467	Spring Rear on LH Machine	1
	10466	Spring on Front on the LH Machine	1
9	10462	Lift Assembly (includes next 3 items)	1
Not Shown	10231	Plated S Handle	1
Not Shown	10301	Compression Spring	1
Not Shown	10302	Roll Pin	1
Not Shown	13806	3/8" x 1" NC Bolt	6
Not Shown	11818	3/8" Serrated Flange Nut	6
Not Shown	10583	Linkage, Main Deflector	2
Not Shown	10587	Spring Guide	2
Not Shown	14461	1/2" x 1 1/2" NC Bolt	2
Not Shown	10278	1/2" Serrated Flange Nut	2
Not Shown	16345	1/2" Fender Washer	4
Not Shown	10239	Bushing 1/2" x 1 1/4"	4

**\* Replaces items 2 – 5, 6 – 7, 9 – 17 on Bale King, upto Serial #BK3682 in External Parts and Controls section**

## HYDRAULIC SCHEMATICS



## HYDRAULIC SCHEMATICS

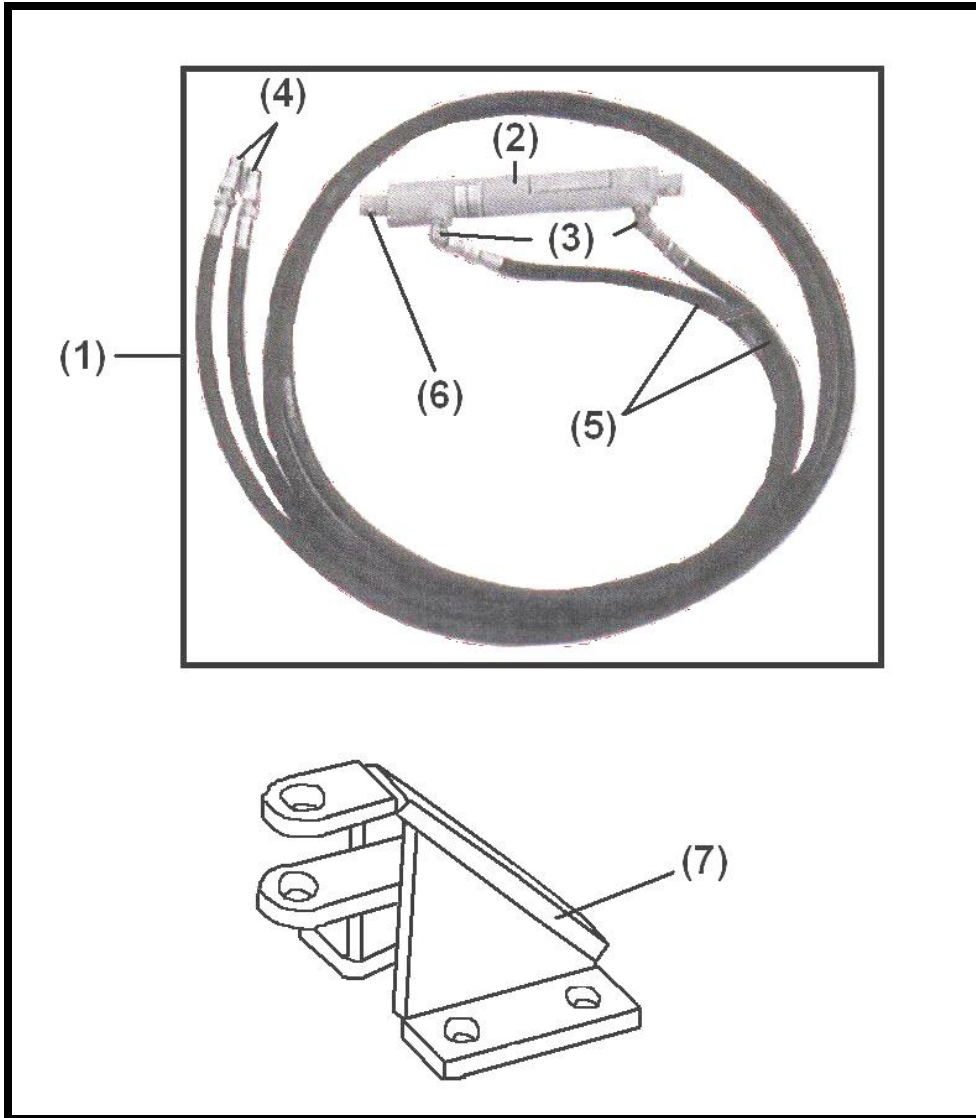
### PARTS LIST

<u>Ref#</u>	<u>BMI#</u>	<u>Description</u>	<u>Qty.</u>
1	10197	Hose - 21" OAL 6FJX - 8FJX	2
2	10198	Hose - 18" OAL 6FJX - 8FJX	2
3	10196	Hose - 102" OAL 6FJX - 8MP	2
4	10563	Hose - 48" OAL 6FJX - 8FJX90	1
5	10564	Hose - 54" OAL 6FJX - 8FJX90	1
6	10190	Hose - 80" OAL 6FJX - 6FJX	2
7	10195	Hose - 120" OAL 6FJX - 8MP	4
8	10335	Hose - 82" OAL 6FJX - 6FJX	2
9	10557	Hose - 21" OAL 6FJX - 6FJX	1
10	10560	Hose - 41" OAL 6FJX - 6FJX	1
11	10334	Hose - 52" OAL 6FJX - 6FJX	1
12	10558	Hose - 70" OAL 6FJX - 6FJX	1
13	10020	Adapter - 8MB - 6MJ90	4
14	10562	Adapter - 8MJ - 8MB 1/32" Orifice	1
15	10561	Adapter - 8MJ - 8MB	1
16	10188	Adapter - 6MJBH - 6MJT	3
17	10161	Adapter - 10MB - 8MJ	6
18	10199	Adapter - 8MB - 6MJ45	2
19	10020	Adapter - 8MB - 6MJ90	1
20	10161	Adapter - 10MB - 8MJ	4

<b>21</b>	<b>11742</b>	<b>Splitter</b>	<b>1</b>
<b>22</b>	<b>10045</b>	<b>Hydraulic Beater Motors</b>	<b>2</b>
Not Shown	<b>10048</b>	<b>Seal Kit</b>	<b>1</b>
<b>23</b>		<b>Fork Hydraulic Cylinder (See Page 15, 16)</b>	<b>2</b>
<b>24</b>	<b>10559</b>	<b>Wing Hydraulic Cylinder (See Page 17)</b>	<b>1</b>
<b>25</b>	<b>10167 17379</b>	<b>Pioneer Tips</b>	<b>6</b>



## OPTIONAL ATTACHMENTS



## OPTIONAL ATTACHMENTS

### PARTS LIST

<u>Ref#</u>	<u>BMI#</u>	<u>Description</u>	<u>Qty.</u>
	<b>GREEN/YELLOW</b>		
1	10316	Hydraulic Lift Attachment	1
2	10317 17442	Hydraulic Cylinder Assembly (See Page 18)	1
Not Shown	10318 17613	Seal Kit	1
3	10201	Adaptor – 6MB – 6MJ90	2
4	10167 17379	Pioneer Male Tips	2

<b>5</b>	<b>10320</b>	<b>Hose – 120”</b>	<b>2</b>
<b>6</b>	<b>15396</b>	<b>1/2” x 3” NC Bolt</b>	<b>1</b>
Not Shown	<b>10239</b>	<b>1/2” x 1 1/4” Plated Bushing</b>	<b>2</b>
Not Shown	<b>13804</b>	<b>1/2” x 2” NC Bolt</b>	<b>1</b>
Not Shown	<b>14443</b>	<b>1/2” NC Locknut</b>	<b>2</b>
<b>7</b>	<b>10516 17594</b>	<b>Bracket Hydraulic and Electric Lift</b>	<b>1</b>
Not Shown	<b>13806</b>	<b>3/8” x 1” NC Bolt</b>	<b>4</b>
Not Shown	<b>13802</b>	<b>3/8” NC Locknut</b>	<b>4</b>