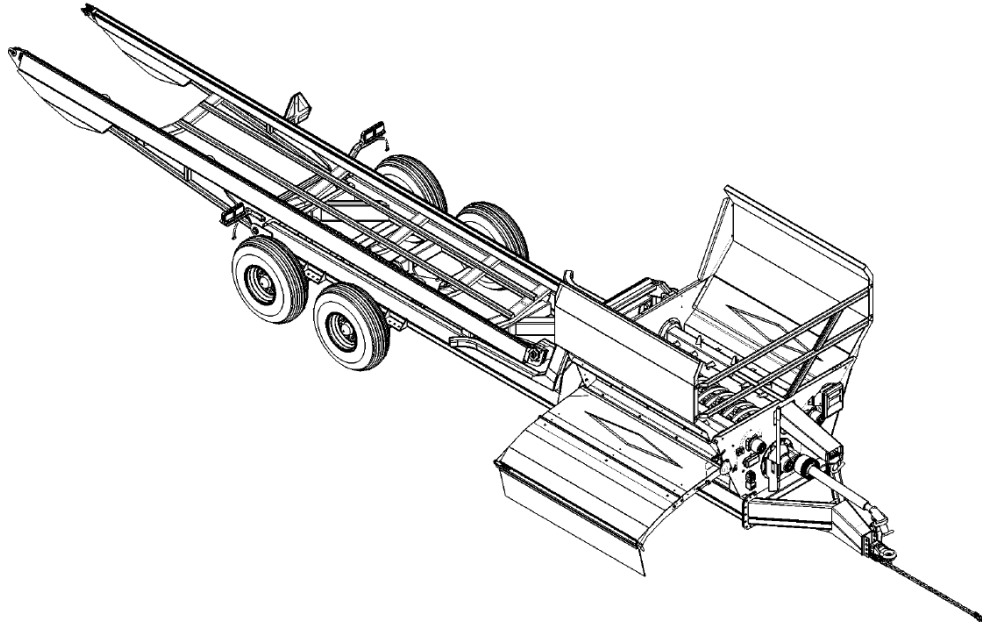




BRIDGEVIEW



Bale King 6200 Processor

SET-UP INSTRUCTIONS

Last Updated: October 4, 2021

Bridgerview Manufacturing Inc.

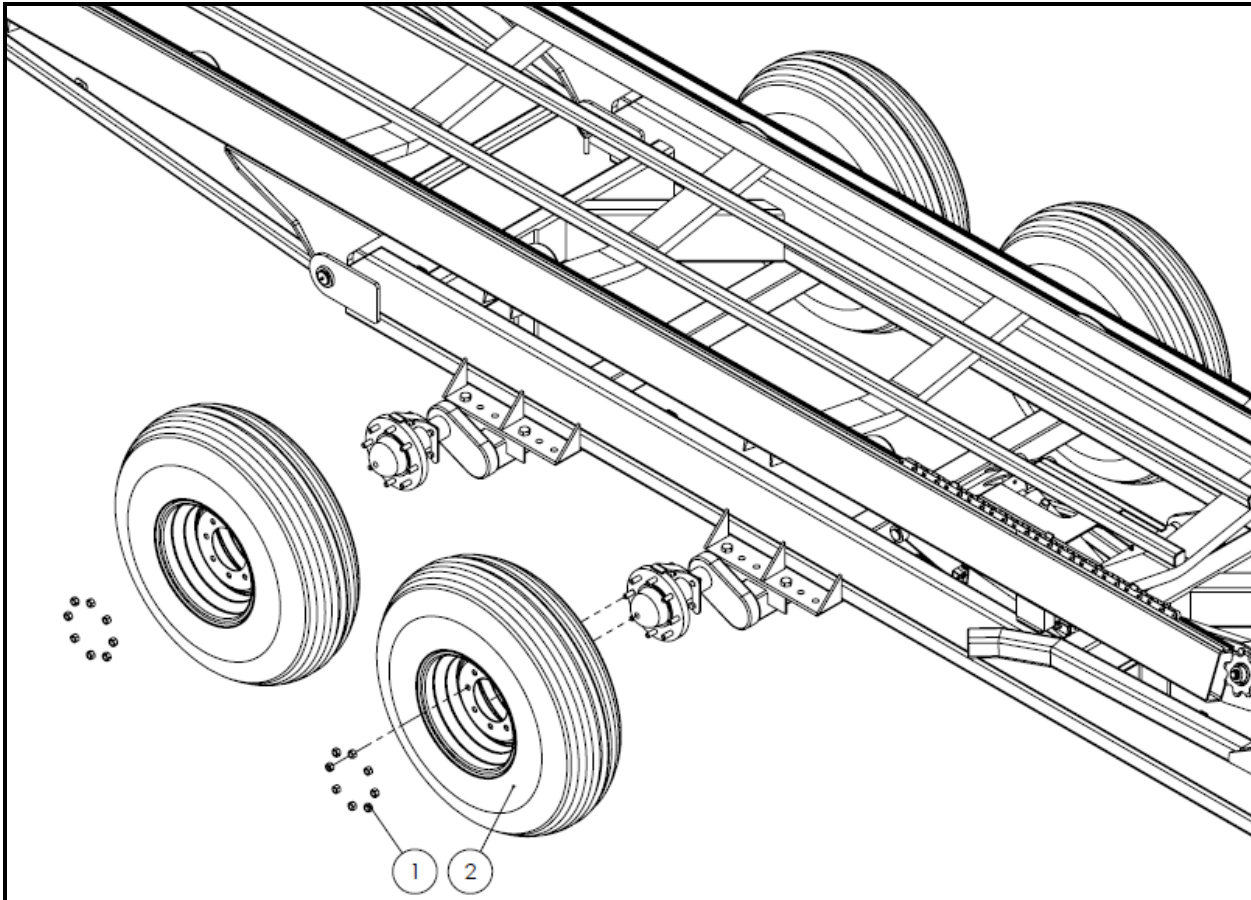
**P.O. Box 4
Gerald, SK
S0A 1B0
(306) 745-2711**



When your new Bale King 6200 arrives by flatbed truck, there are a few things that must be done to get it ready for use. This manual provides step-by-step instructions.

NOTE: Not all steps are required, depending on how the machine was shipped.

1. Tires

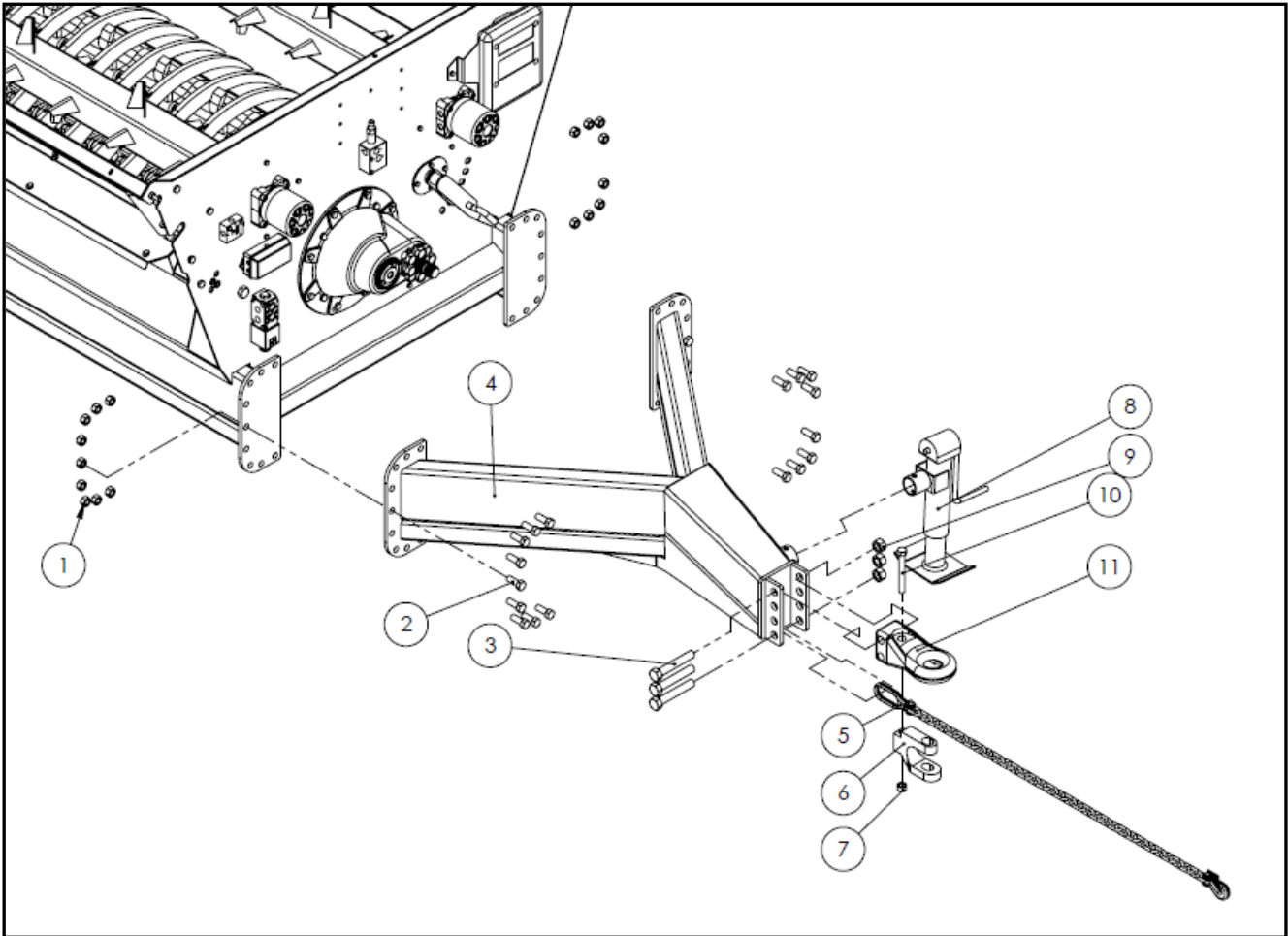


Item #	Description	ID Number	QTY.
1	Wheel Nut	23183	32
2	Tire 14L-16.1SL (12 Ply) Rims W11C x 16.1 x8	22851 23742	4

- ❖ Wheel Nut torque: 125 ft-lb (170 Nm)
- ❖ Tire Inflation: 25 Psi (1.72 Bar)



2. Install hitch

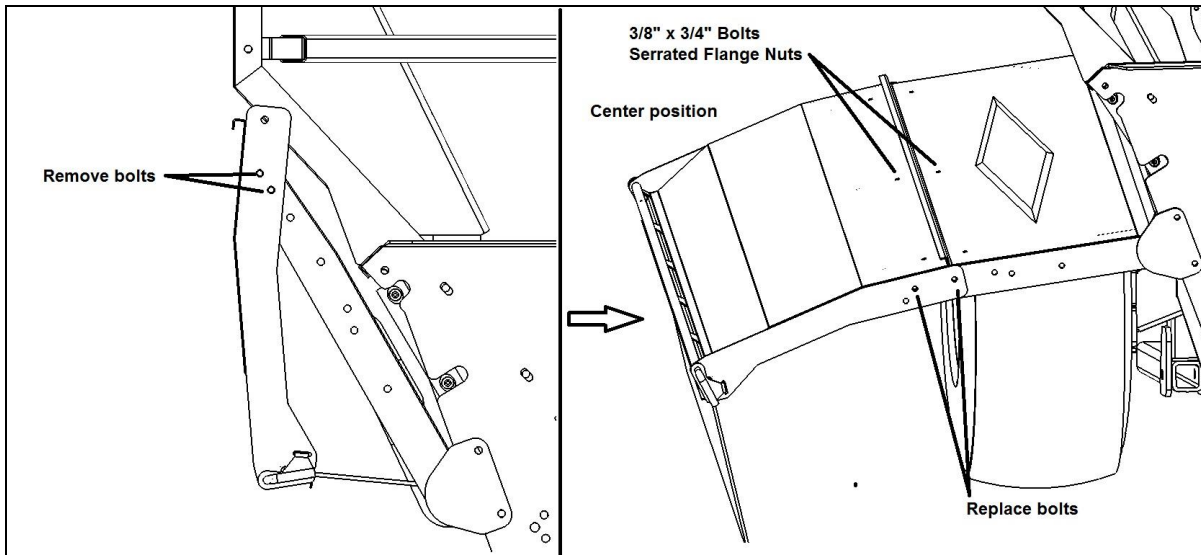


Item #	Description	ID number	QTY.
1	3/4" Stover Lock Nut	11823	19
2	3/4" x 2.0" Bolt	13800	18
3	1.0" x 6.25" Bolt	23326	3
4	Hitch	23404	1
5	21000 LBS Safety Chain	23559	1
6	Hitch Clevis	22441	1
7	3/4" Stover Lock Nut	11823	19
8	7000 LBS Jack	23677	1
9	1" Stover Lock Nut	21746	3
10	3/4" x 6" Bolt GR.8	23170	1
11	Casted Hitch (7500 LBS)	23404	1



3. Unfold side deflector

Remove the four 1/2"x 1" bolts and serrated flange nuts connecting the two deflector pieces. Set the outside deflector piece on the ground and lower the deflector (remove safety lock first). Slide the outer deflector piece back on and put in the CENTER POSITION. Reinstall the 1/2 x 1" bolts, and install the 3/8x 3/4" bolts along the top connection. Tighten all bolts. Plug the 3 exposed holes with 3/8" bolts as well. These bolts are wrapped around the near agitator motor.

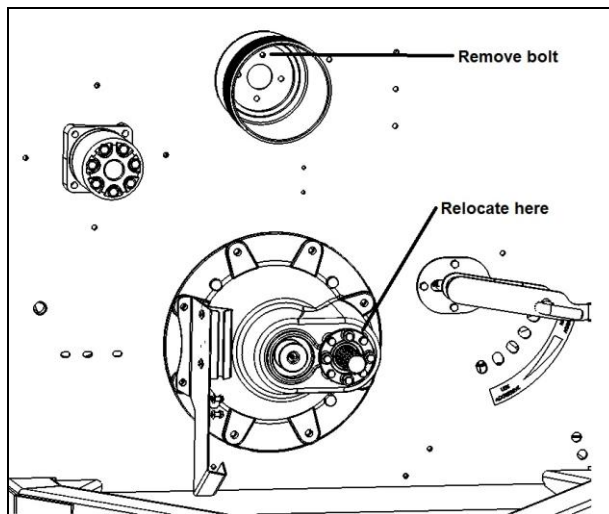


WARNING: Do not swing the deflector down before the deflector is unfolded. It will hit the tire.

4. Install PTO holder

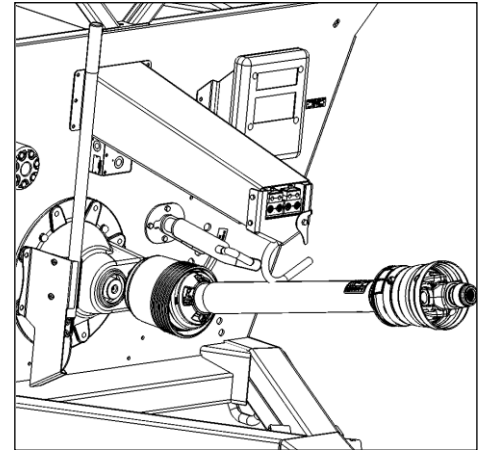
Remove the bolt holding the PTO boot in place. Move to its proper position.

NOTE: Make sure the gearbox grease zerk is still accessible after the boot is installed.

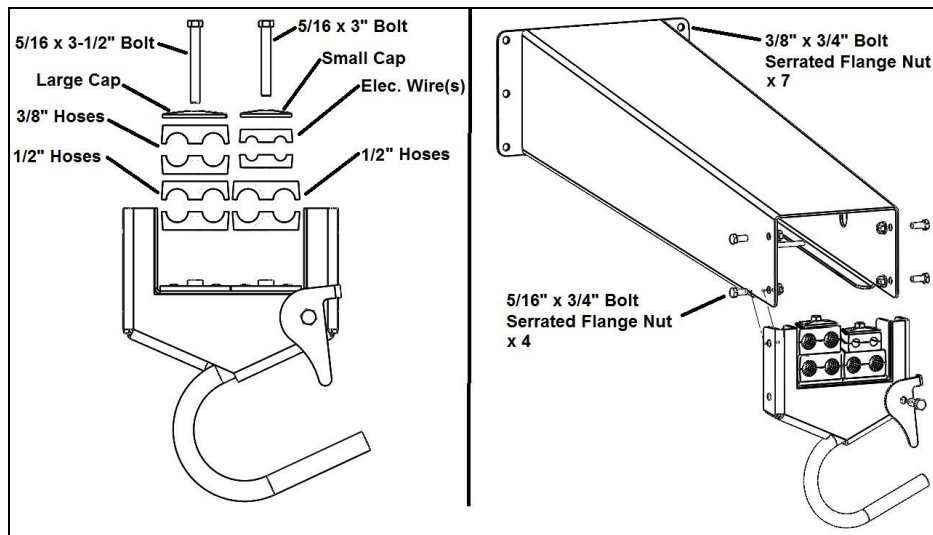




Remove the shipping straps tying the PTO shaft, fork tines and PTO holder to the inside of the tub. Bolt the PTO holder channel to the front of the tub using seven 3/8 x 1" bolts and serrated flange nuts. Run all hoses and wires through the PTO holder. The 1/2" hoses must come in after the rear cross bar, all others come in before.



Install the plastic clamps over top of each set of lines roughly in line with the end of the PTO holder. Bolt the clamps to the end plate. Lift the end plate up into place, and install on the PTO holder using four 5/16" x 3/4" bolts and serrated flange nuts. Tighten all bolts. Place hoses and electrical plug in the corresponding slots on the side of the PTO holder.



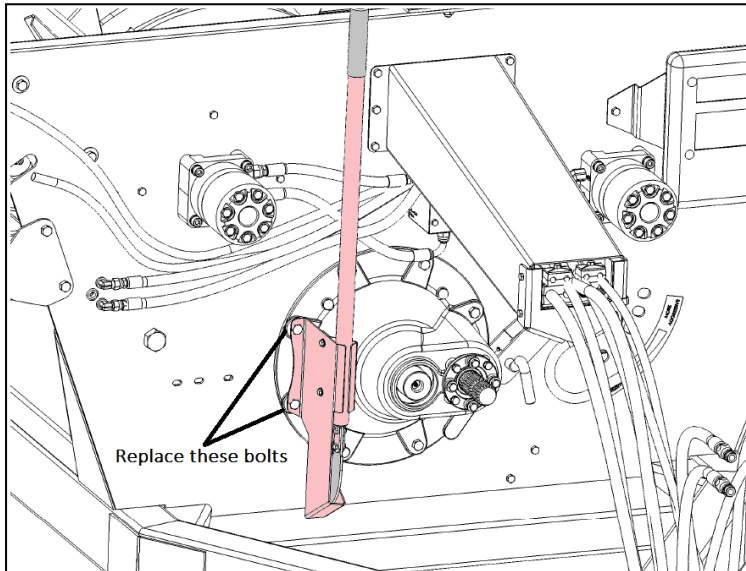
5. Install PTO Shaft and Shield

Unsnap the PTO boot guard from the ring, and install the PTO shaft through the guard and over the spline of the gearbox. Remove the two 5/8" bolts running through the coupler, then slide onto the shaft until the bolt holes line up with the groove. Tighten these bolts to 160 ft-lb. Snap the shield back into place, and swing the shaft up into the locking bracket.



6. Twine Cutter Option

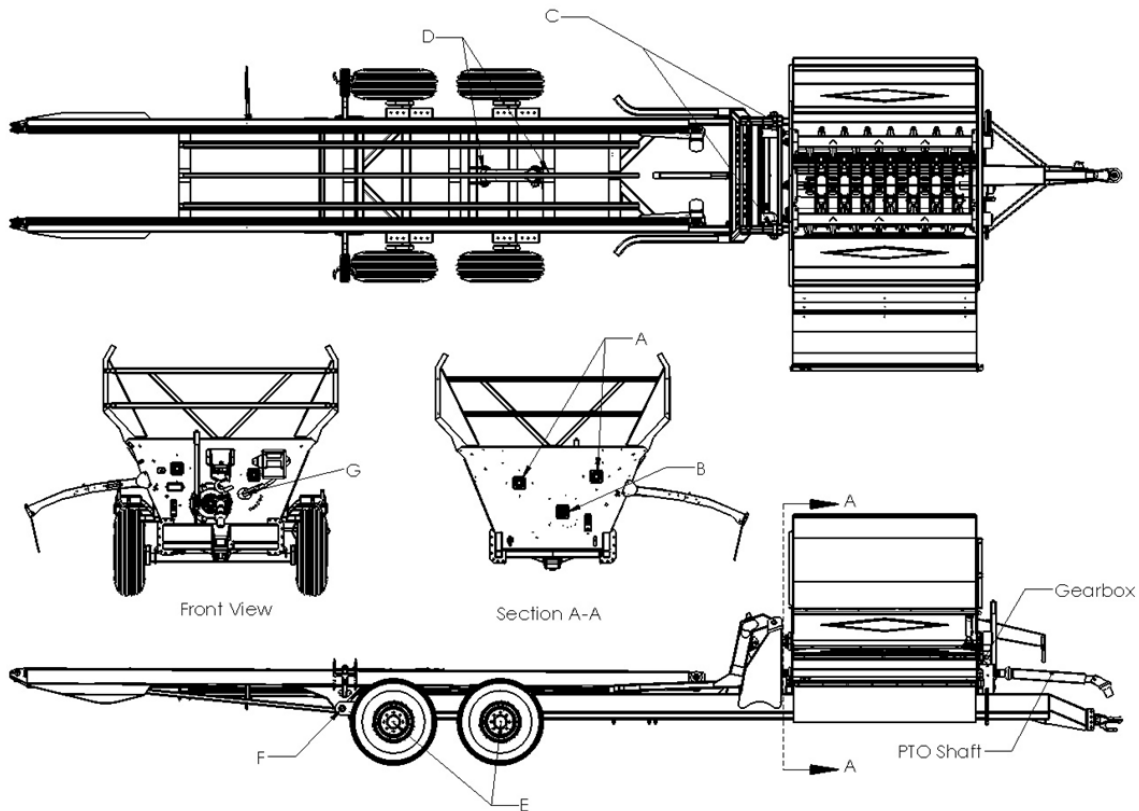
Install the twine cutter handle to the front of the tub as shown. The 2 bolts going through the gearbox must be replaced with the longer ones provided.





7. Final inspection

- Before operation, the machine should be checked over for any loose hardware, etc.
- All grease fittings should be checked for accepting grease.

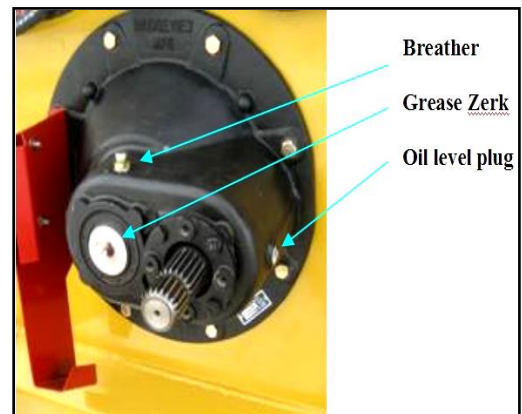


- The gear box requires GL5 80W90 gear oil. The oil should be filled to the level plug (approximately **500 mL**). Ensure the breather is installed and free of obstruction.

- Check the functionality of the hydraulics as equipped:

- Rear fork lifts up and down
- Bed lifts up and down
- Bed chain moves both directions
- Discharge deflector lifts up and down
- Agitators rotate both ways
- Grain augers turn one way only

- Connect the PTO shaft and spin the rotor up to PTO RPM. Check for any excessive vibrations and noises.



*** MAKE SURE THAT THE TUB IS COMPLETELY EMPTY BEFORE RUNNING THE ROTOR. KEEP THE DISCHARGE AREA CLEAR AND LOWER THE DEFLECTOR AND DEFLECTOR RUBBER FULLY TO LIMIT AIR FLOW BEYOND THE TESTING AREA. ***