

# ***Move Mountains of Dirt***



Scraper Pan pages 2 & 3



Pulldozer pages 4 & 5



Transformer pages 6 & 7

**PULLDOZER**  
by **BRIDGEVIEW**



# ***Land Shaping Equipment***

## ***Make All Your Land Productive***



# 1220A SCRAPER PAN

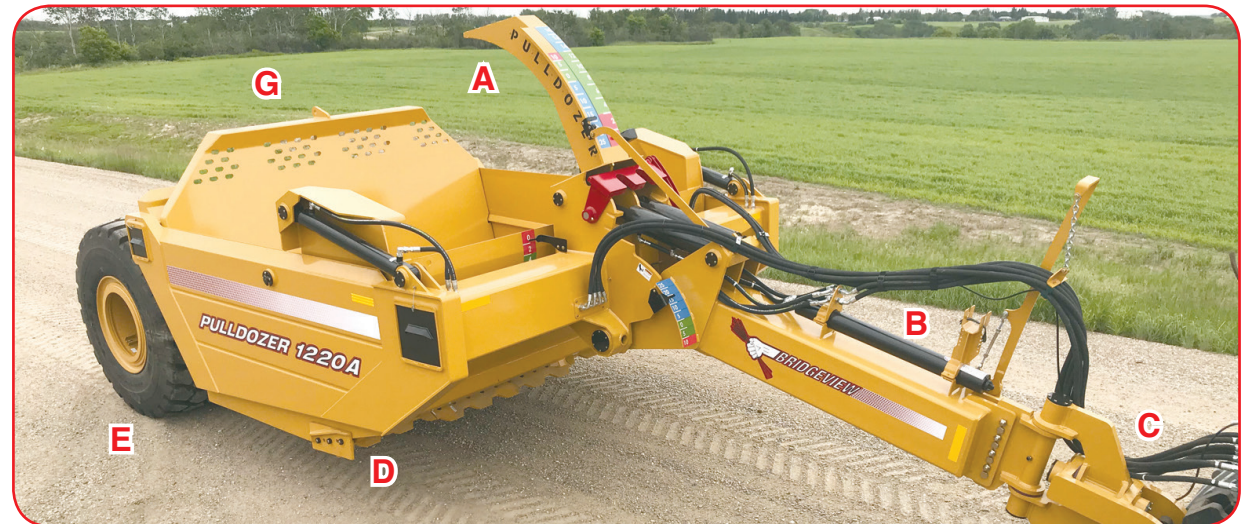


1220A's are tandem ready. When moving dirt further you can nearly double productivity.

## **Make More Land Productive**

**Land values, wider equipment, input costs and precision farming are driving the demand for efficiency.**

**Optimize every acre with Bridgeview's land shaping equipment.**



## **Unique Features:**

- A)** Removable GPS tower is centered exactly over the blade. A simple elevation correction in control software is all that is needed. The pup scraper is available with a cutting height and apron position indicator mounted high on the GPS tower so they are visible over a loaded front scraper.
- B)** Ride control accumulator improves operator comfort at high speeds. **C)** Semi-mount design for improved traction: the more you load the more traction you'll have. **D)** Double walled, clean, obstruction-free design: no protruding parts inside the bowl to damage when ejecting stubborn rocks or debris. Extra strong design - this is one scraper that isn't afraid of rocks. **E)** Two-wheeled design has less rolling resistance for easier pulling in heavy mud and less skewing on hillsides. Top quality radial tires are standard. **F)** 1220A's are tandem ready. The enclosed rear compartment sheds dirt and rocks to protect the push-off mechanism. **G)** Push-off gate travels past the cutting edge for total cleanout. Sequencing valves provide one-lever control of apron lift, push-off and reset allowing a more intuitive learning curve.





**Why a semi-mount scraper:** It's all about traction. With traction you fill the scraper everytime, work in more difficult conditions and make smoother cuts. A noticeable difference when making the final cut. You'll also have more precise depth control. Important with water management software. In tandem operation filling the front scraper first gives you tremendous traction for filling the rear scraper.



**Built Tough:** This is the one scraper pan that isn't afraid to dig or transport rocks. When it's been designed, relentlessly tested and manufactured by Bridgeview you know

**IT'S GOTTA BE TOUGH...**



**Fill Faster:** Dropped center blade section holds the scraper pan down so you get a level cut.

Available serrated blades penetrate with more force per inch of blade. Fills faster with less demand on your tractor, even in hard packed ground.

#### Ag Adaptor Hitch:

With the semi-mount receiver installed on your tractor, coupling to your other ag equipment isn't a problem.

Simply drop in the Ag Adaptor Hitch. No maneuverability lost.

Six-way semi-mount provides a wide range of motion so the scraper follows better.



## PD 1220A Scraper Pan Operational Data

### Dimensions

Recommended Tractor Power	400+ hp	300+ kW
Approximate Dry Weight	28,000 lbs	12700 kg
Overall Dimensions	143.5" (11.96') Wide x 400" (33.3') Long	
	3.64 m Wide x 10.16 m Long	
Length (Tire Center to Hitch Pin)	324" (27')	8.23 m
Outside Tire Width	132" (11')	3.35 m
Height @ Max. Elevation (Approx.)	GPS Tower Removed - 109" (9.1') (2.77 m)	
	GPS Tower Installed - 142" (11.8') (2.72 m)	
Capacity - Struck	14 yd <sup>3</sup>	10.7 m <sup>3</sup>
Capacity - Nominal	20 yd <sup>3</sup>	15.3 m <sup>3</sup>
Capacity - Heaped (Approx.)	22 yd <sup>3</sup>	16.8 m <sup>3</sup>
Bowl Internal Dimensions (Approx.)	132" (11') Wide x 98" (8.2') Long x 50.5" (4.2') Deep	
	3.35 m Wide x 2.49 m Long x 1.28 m Deep	
Weight Distribution (Heaped)	Tongue - 31%	
	Axle - 69%	

### Transportation

Lights and Marking	7-Pin Male Trailer Plug	
	Red/Amber Lights/Decals, SMV Sign	
Hitch Style	6-Way Semi-Mount	
Hitch Articulation	35° Left/Right of Center	
	23° Up	
Tires	2 x 875/65R29 Radials	
Tire Capacity (Each)	34,200 lbs	15500 kg

### Blade

Blade Options	Serrated Blade, Hardened, Dropped Center	
	Straight Blade, Hardened, Dropped Center	
Blade Width	131.5" (10.96')	3.34 m
Blade Angle	30°	
Number of Blade Sections	Left, Right, Centre (Replaceable)	

### Hydraulics

Hydraulic Remotes Needed	2 (One for Lift, One for Ejector/Apron)	
Ejector/Apron Sequencing	Automatic On One Remote	
Hydraulic Dampening	Nitrogen-Filled Piston Accumulator	
Hydraulic Coupler	1/2" Pioneer Male x 4 - 3/4" Available	

### Other Features

For tandem applications a 1220A Lead Scraper Upgrade kit is available. Other options include 1220A Pup with cutting height and apron position indicators mounted high on a GPS tower for visibility over a loaded front scraper, Standard GPS Tower, Cat 4 or Cat 5 Ag Hitch Adapter and Power Unit Mount Hitch Adapter.





***Dig Deep, Dig Fast:*** The Pulldozer dug this big burial trench in just 28 minutes. Much faster than a dozer. With the Pulldozer you'll be able to deal with your rock and brush piles yourself. You can even use it to dig dugouts and retention ponds. Dug, moved and spread 300 cu. yds in less than half an hour.

Muckmaster tires now available.

## ***Pulldozer - Make All Your Land Productive***

***Pulldozers are remarkable levelling machines. Also used to dig ponds, bury rocks and cover brush piles.***

***Super efficient at cutting and maintaining drainage channels. Backsloping channels to improve water flow. Digging out big roots and rocks.***

***Pull dirt from hills and drains to elevate low areas. Put a dirt cap over willows and cattails. Make more land productive. In winter use it to clear snow fast.***

***Big Capacity, the 24' model will easily pull 20 cu. yards of dirt. Move a mountain of dirt.***

*(For complete specifications see page 8)*





**ELEVATE:** Use the Pulldozer to remove the top soil. Pull dirt from hills to fill in and elevate pot holes and other low lying areas. Put the top soil back. It's as easy as that.

When you think about it, elevating pot holes makes a lot of sense. First of all, your drainage channels won't have to be as deep so you'll move less dirt.

Secondly, you'll have a much larger area for water absorption and evaporation. You'll be on your land sooner and all of your land will be productive. Can be used in virtually all conditions - wet or dry.

**SEED BED READY:** The Pulldozer levels your ground as it cuts and fills as well as when it empties. Leaves your fields smooth and level.

The Pulldozer can be used to grade and level virtually any kind of material in one pass. Leaves your field seed bed ready without additional operations, additional tillage or additional time.



Exceptional visibility of the cutting edge combined with the long wheel base and wide stance makes it easier for virtually any operator to leave your fields smooth and level.



**ANGLE:** Angle the blade to cut and maintain drainage ditches. The standard tilt indicator makes it easy for the operator to know what slope is being cut. The Pulldozer is rugged enough to dig out big roots and rocks. At 1,000 lbs. per foot it digs in fast and stays in the ground. Virtually indestructible.

By operating the Pulldozer on a slight angle you can cut wide, gradual drainage channels that are easy to work through.

Extra large flotation tires let you get into and work through wetter areas. Easily fitted with your laser controls.

**BACKSLOPING:** The Pulldozer is tremendously efficient at backsloping, contouring and cleaning existing ditches and drains. Cleaning existing ditches and drains keeps them operating at maximum capacity. Backsloping and contouring does two things - it allows you to work through them and it makes it much easier for water to flow into them from the rest of the field.

Drop the dirt from cleaning back into your field to elevate nearby potholes. Do it all in one operation. U-shaped blade gobbles up mountains of dirt - wet or dry.

**RECLAIM:** Make all your land productive by reclaiming sloughs and other unproductive areas. The Pulldozer easily knocks down brush, willows and cattails. The blade strips bark off small trees to help kill them. Then, put a dirt cap over the area. It is the fastest, most economical way to turn unproductive land into productive land.

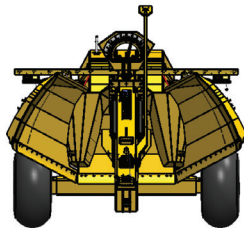
Also, the Pulldozer is ideal for sorting rocks and roots from dirt. Simply lift the blade slightly and drive. Rocks and roots come along while the dirt sifts out the bottom.





### **TRANSFORMER Series - Do More**

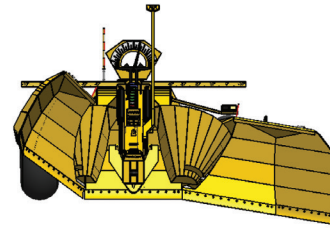
*Narrow transport is only one advantage. With adjustable axle width and wings that independantly adjust from -10° to +40° the Transformer series fit anywhere and shape anything.*



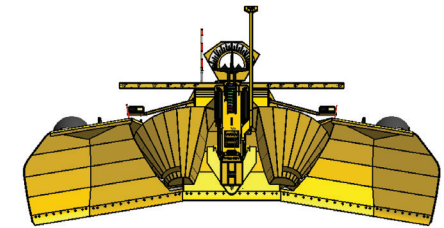
**CUT CHANNELS:** The Transformers Series can be worked in any position including transport. Raise both wings to cut high capacity, flat bottomed channels.



- Does everything the standard Pulldozer does plus the Transformer series have the flexibility to fit into and shape areas a straight blade can't get into.
- Easy, narrow transporting. 14' on the 24' model and 10' on the 18' model.
- Can dig, shape land and move dirt in all positions including transport.

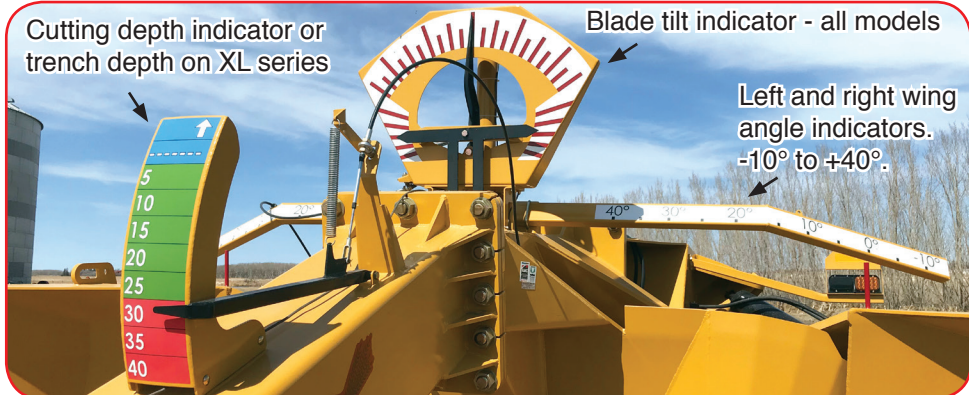


**TERRACE:** Raise one wing up, adjustable to +40°, and lower the other wing, adjustable down to -10°. Move axles in or out for best stance and control.



**CROWN:** Lower both wings to build a crown. In addition to narrow transport the transformer gives you the control to transform your world.





**TRENCH:** All Pulldozer models, including the Transformer Series, are available with the retractable trencher. (XL series) It will do everything the standard Pulldozer or Transformer Series will do plus it can simultaneously cut a trench up to 28" wide and 24" deeper than the blade. Quickly drain an area without moving as much dirt.

The dirt from the trench is drawn along by the Pulldozer. In one pass you get a clean trench without the side ridges that interfere with drainage. The dirt can then be deposited in a low area. Most farm equipment, including seeding equipment, can work through the trench on an angle. Works in wet or dry ground.

When retracted the trencher does not interfere with normal Pulldozer operations.



For cutting and digging work use the Pulldozer serrated blades. They now come with deeper, more aggressive notches. You get twice as many pounds of cutting pressure per inch of blade. Cutting and depth control are both improved. The serrated blades also make it easier to pull and they reduce packing.

For grading and levelling work straight industrial grader blades can be used (not shown).

(for specifications see page 8)



Specifications	Pulldozer				Pulldozer Transformer			
Model	1810	1810XL	2410	2410XL	1870	1870XL	2470	2470XL
	DIMENSIONS							
Horsepower Requirement	250-400 hp		400-600 hp		250-400 hp		400-600 hp	
Approximate Dry Weight	18,000 lb.	22,000 lb.	24,000 lb.	28,000 lb.	21,000 lb.	25,000 lb.	27,000 lb.	31,000 lb.
Hitch Weight	6,000 lb.	7,600 lb.	7,500 lb.	9,000 lb.	6,300 lb.	7,900 lb.	8,000 lb.	9,500 lb.
Transport Height	9' 5"		10' 5"		11' 5"		12' 1"	
Transport Blade Clearance	2' 0"		2' 0"		2' 0"		2' 0"	
Transport Width	18' 5"		24' 5"		10' 0"		13' 11"	
Transport Length	26' 7"		26' 2"		28' 5"		29' 2"	
	TRANSPORTATION							
Maximum Towing Speed	25 mph (40 km/h)							
Transport Lights / SMV Sign	Red and Amber Flashing LED, SMV Sign Standard							
Cylinder Safety Locks	Lift and Tilt Locks Standard							
Hitch Height	Adjustable (2 1/4" Increments)							
Hitch Tongue	Standard Cat. 4 (1 1/2" or 2" Pin) & Optional Cat. 5 (2 3/4") Articulating (35°)							
Tires	23.1-26 / 12 ply		28L x 26 / 16 ply		750/60R26		1000/50R25	
Hydraulic Remotes	2	3	2	3	5	6	5	6
	OPERATION							
Working Width	18 ft.		24 ft.		18 ft.		24 ft.	
Centre Blade Width	48"		72"		48"		72"	
Volume	15 - 18 cubic yards		20 - 25 cubic yards		9 - 18 cubic yards		15 - 25 cubic yards	
Blades	Replaceable Industrial Grader Blades (Serrated Blades Available)							
Scraping Weight	1000 lb./ft. (2000 lb. / ft. for Serrated Blades)							
Maximum Blade Depth	10 1/4 in.		12 in.		15 in.		15 in.	
Blade Tilt Angle Range	+/- 13.5° (45" over 18 ft.)		+/- 10° (45" over 24 ft.)		+/- 13.5° (45" over 18 ft.)		+/- 10° (45" over 24 ft.)	
Blade Tilt Indicator			Standard					
Wing Travel (Compared to Ground)	Fixed		Fixed		-10° to +40°		-10° to +40°	
Maximum Tilted Blade Depth	32"		32"		34"		34"	
	TRENCHER							
Maximum Trenching Depth (Rip)		35"		42"		35"		42"
Trenching Depth Indicator		Standard		Standard		Standard		Standard
Trencher Safety Lock		Standard		Standard		Standard		Standard
Finish	Super Durable Powder Coat							
Warranty	1 Year Parts and Labour							



# BRIDGEVIEW

P.O. Box 4, Hwy. 22 West, Gerald, SK S0A1B0

**PH: 306-745-2711**

**FAX: 306-745-3364**

**www.bridgeviewmanufacturing.com**

Printed in Canada

Download video highlights

Available from:

Specifications are subject to change without notice.

Copyright 2019