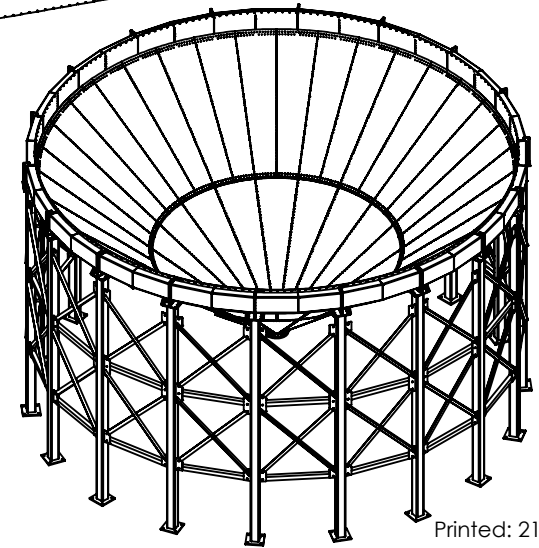
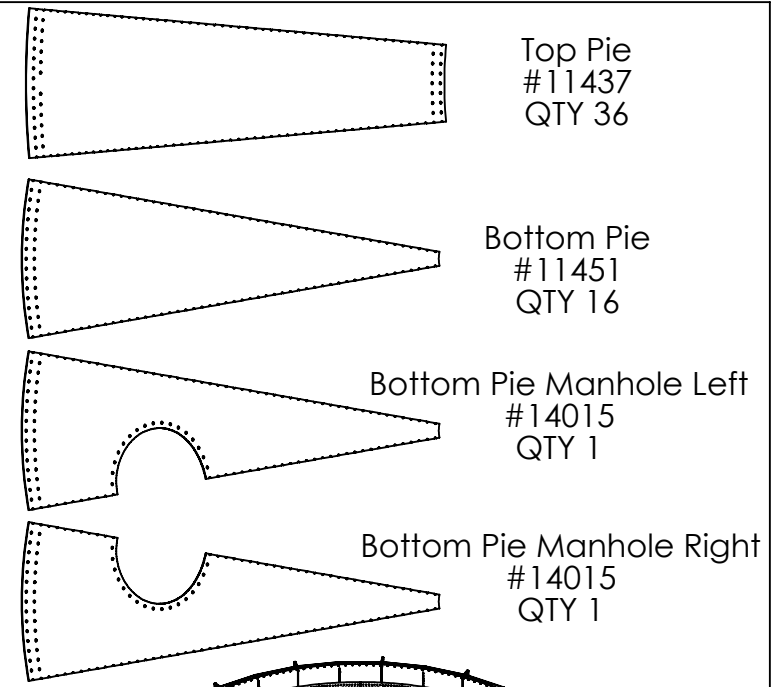
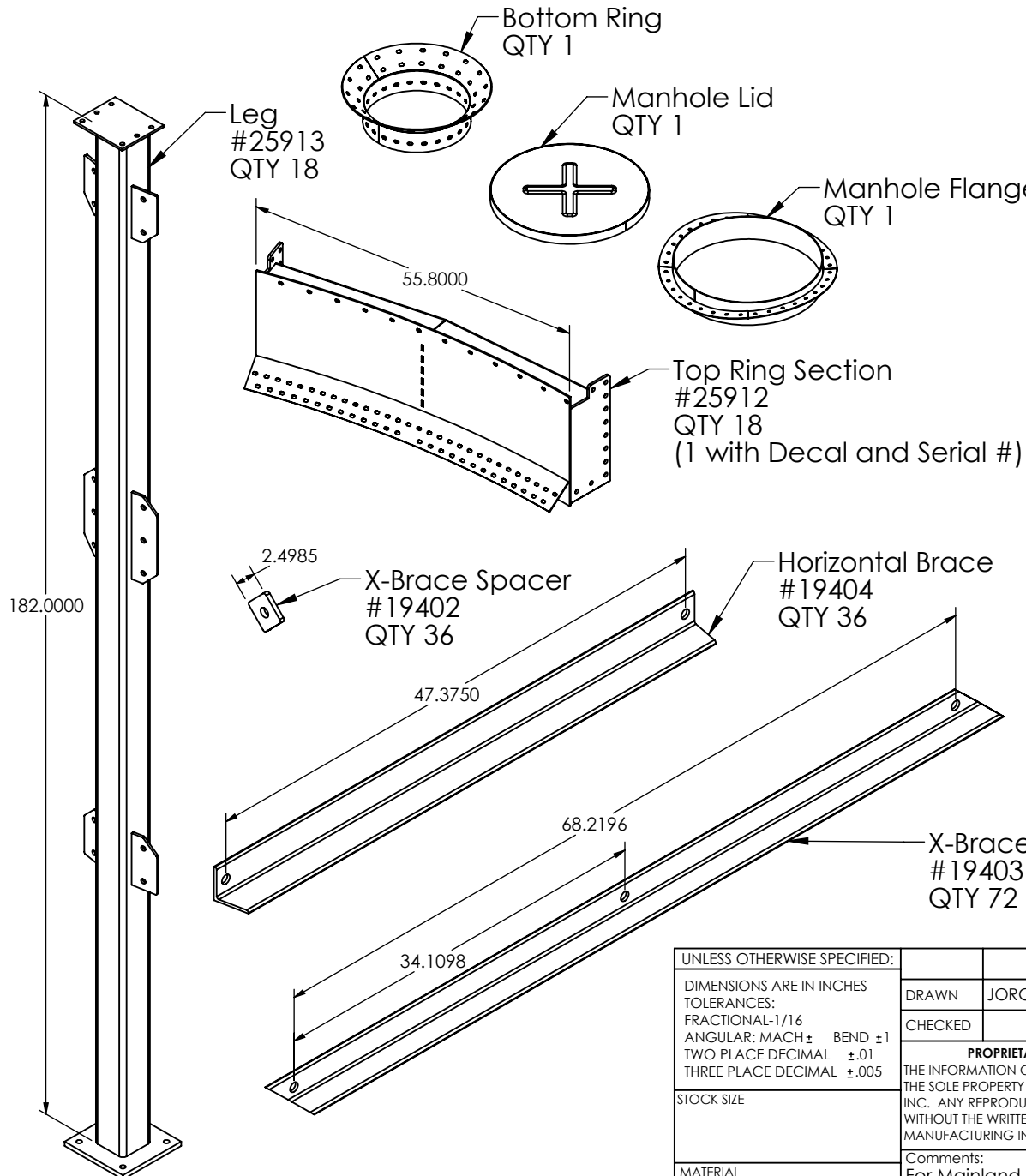


Ensure that the following components are available



Printed: 21/10/2014

UNLESS OTHERWISE SPECIFIED:		NAME	DATE	BRIDGEVIEW
DIMENSIONS ARE IN INCHES TOLERANCES: FRACTIONAL-1/16 ANGULAR: MACH± BEND ±1 TWO PLACE DECIMAL ±.01 THREE PLACE DECIMAL ±.005		DRAWN	JORGENSEN, Orran	
STOCK SIZE		CHECKED	TITLE: Hopper Cones	
MATERIAL		PROPRIETARY AND CONFIDENTIAL THE INFORMATION CONTAINED IN THIS DRAWING IS THE SOLE PROPERTY OF BRIDGEVIEW MANUFACTURING INC. ANY REPRODUCTION IN PART OR AS A WHOLE WITHOUT THE WRITTEN PERMISSION OF BRIDGEVIEW MANUFACTURING INC. IS PROHIBITED.		Bolt-Together Hopper Cone 27-40-Style 4, Seismic Design
		Comments: For Mainland Machinery, Abbotsford, BC	SIZE A	ID# : Dwg : HCB-27-40-X1-4
		SCALE: 1:24		WT.: 20629.46 lb Page 1 of 6

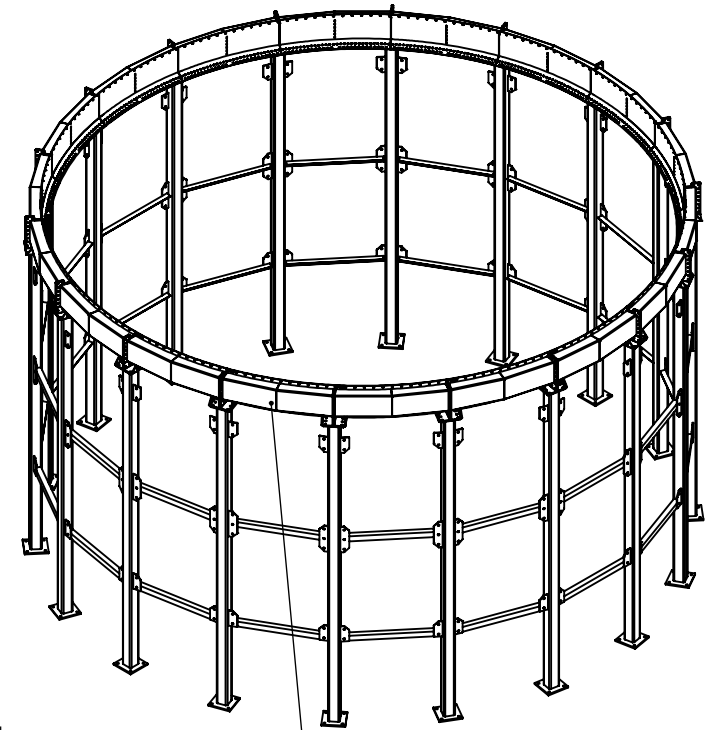
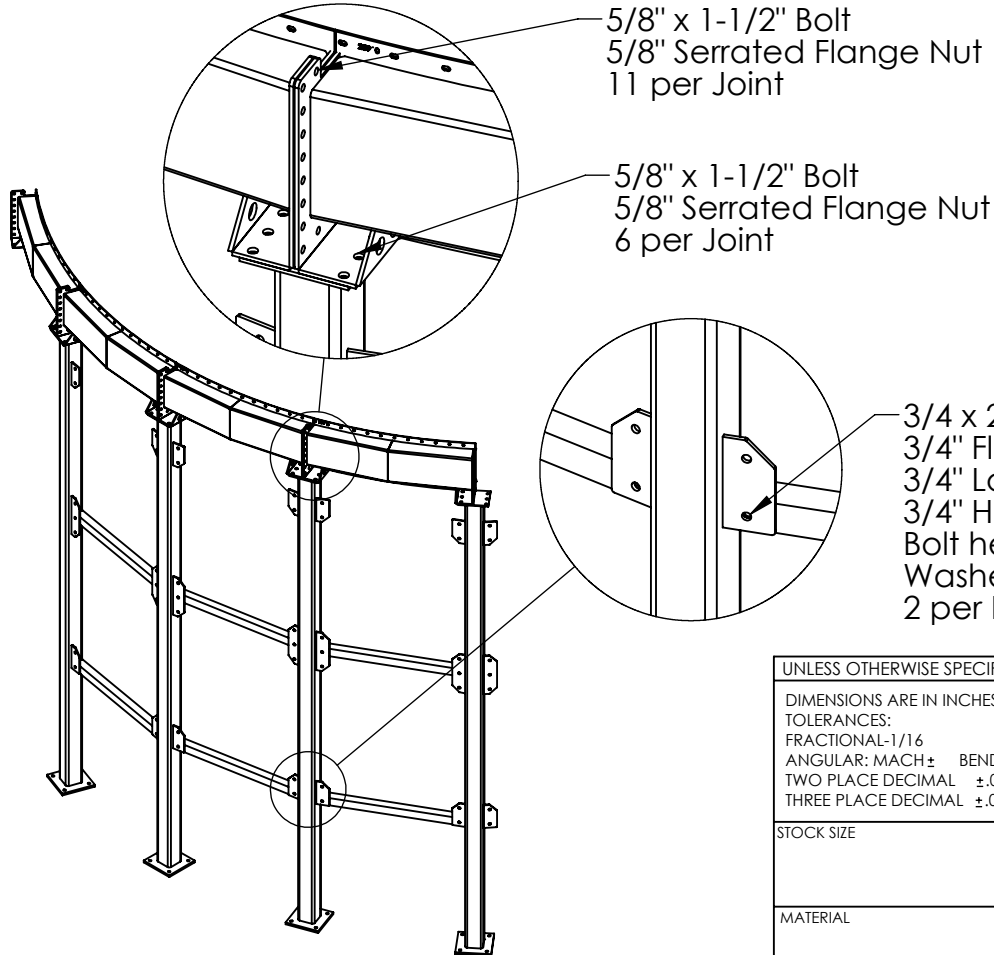
Step 1: Bolt 4 top ring sections and 4 leg sections together as shown

- Assemble laying on ground to be lifted afterwards
- Brackets on legs must angle towards each other
- Install 2 horizontal leg braces between each leg
- Leave all hardware loose
- Repeat 4 times
- Assemble remaining 2 top ring sections and legs in similar fashion

Step 2: Lift each section up to form a complete circle

- Bolt together remaining top ring and leg joints
- Install remaining horizontal leg braces

IMPORTANT: ALL HARDWARE MUST REMAIN LOOSE



Position top ring with decal as desired

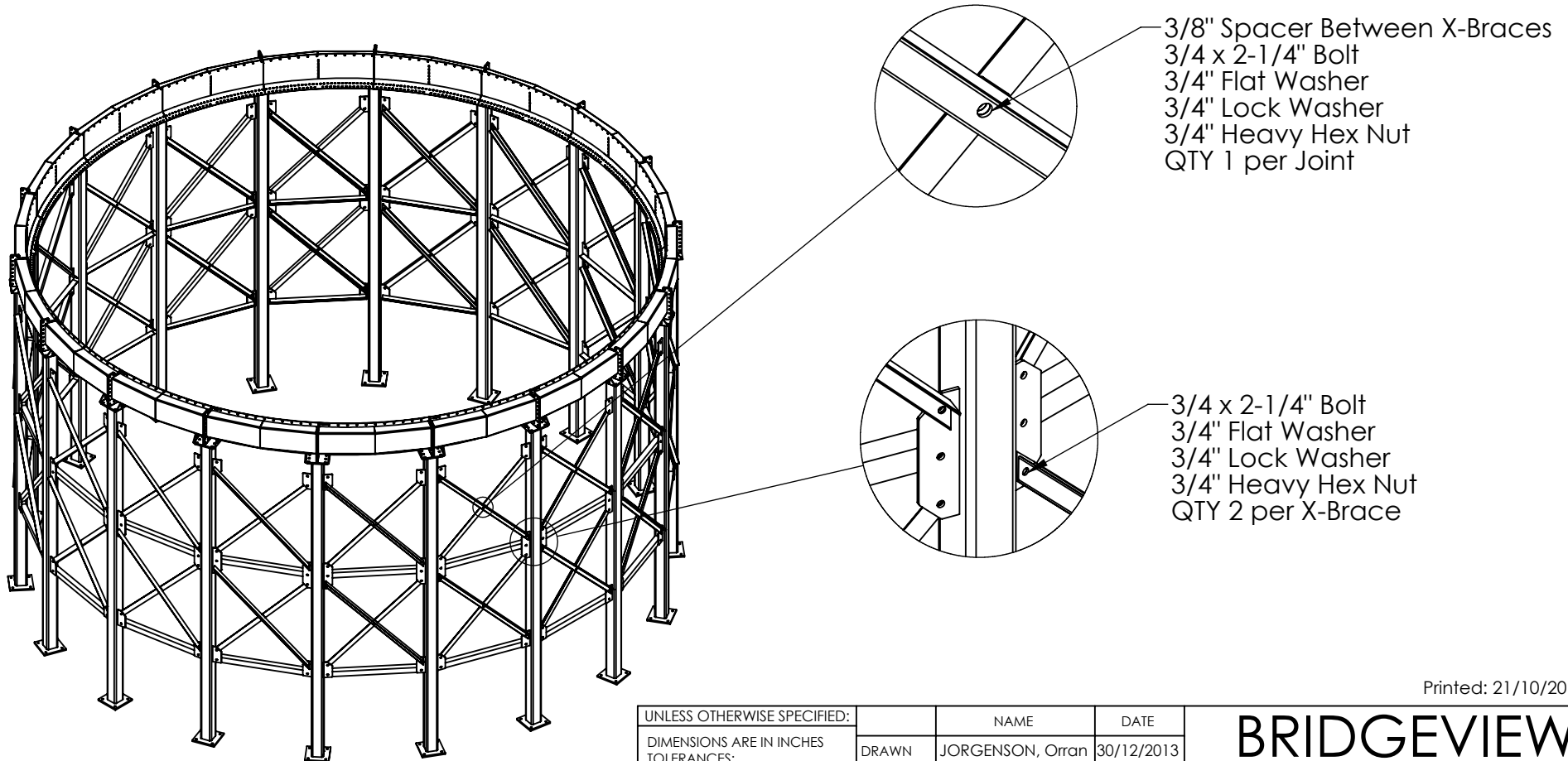
Printed: 21/10/2014

UNLESS OTHERWISE SPECIFIED:		NAME	DATE	BRIDGEVIEW	
DIMENSIONS ARE IN INCHES TOLERANCES: FRACTIONAL-1/16 ANGULAR: MACH ± BEND ±1 TWO PLACE DECIMAL ±.01 THREE PLACE DECIMAL ±.005		DRAWN	JORGENSON, Orran		
STOCK SIZE		CHECKED	TITLE: Hopper Cones		Bolt-Together Hopper Cone 27-40-Style 4, Seismic Design
MATERIAL		<p align="center">PROPRIETARY AND CONFIDENTIAL</p> <p>THE INFORMATION CONTAINED IN THIS DRAWING IS THE SOLE PROPERTY OF BRIDGEVIEW MANUFACTURING INC. ANY REPRODUCTION IN PART OR AS A WHOLE WITHOUT THE WRITTEN PERMISSION OF BRIDGEVIEW MANUFACTURING INC. IS PROHIBITED.</p>		SIZE A ID# : Dwg : HCB-27-40-X1-4	
		Comments: For Mainland Machinery, Abbotsford, BC		SCALE: 1:64	WT.: 3237.88 lb
				Page 2 of 6	

STEP 3: Install X-braces as shown

STEP 4: Tighten hardware in order (top down)

- Tighten all bolts between top rings
- Tighten all bolts between top rings and legs
- Tighten top row of x-braces
- Tighten top horizontal brace
- Tighten bottom row of x-braces
- Tighten bottom horizontal brace



Printed: 21/10/2014

UNLESS OTHERWISE SPECIFIED:		NAME	DATE	BRIDGEVIEW	
DIMENSIONS ARE IN INCHES TOLERANCES: FRACTIONAL-1/16 ANGULAR: MACH± BEND ±1 TWO PLACE DECIMAL ±.01 THREE PLACE DECIMAL ±.005		DRAWN	JORGENSEN, Orran		
STOCK SIZE		CHECKED	TITLE: Hopper Cones		Bolt-Together Hopper Cone 27-40-Style 4, Seismic Design
MATERIAL		<p align="center">PROPRIETARY AND CONFIDENTIAL</p> <p>THE INFORMATION CONTAINED IN THIS DRAWING IS THE SOLE PROPERTY OF BRIDGEVIEW MANUFACTURING INC. ANY REPRODUCTION IN PART OR AS A WHOLE WITHOUT THE WRITTEN PERMISSION OF BRIDGEVIEW MANUFACTURING INC. IS PROHIBITED.</p> <p>Comments: For Mainland Machinery, Abbotsford, BC</p>		<p>SIZE A</p> <p>ID# : Dwg : HCB-27-40-X1-4</p>	
		SCALE: 1:80		WT.: 16512.03 lb	Page 3 of 6

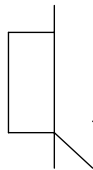
STEP 5: Install top pie sheets

- Line up first sheet, centered on band
- The missing holes should align and the bent edge should be on the counter-clockwise side
- Install all band bolts
- Add next sheet in a counter-clockwise direction
- Each sheet should overlap on top of the previous sheet
- Install band bolts
- Install seam bolts
- Continue for the rest of the sheets

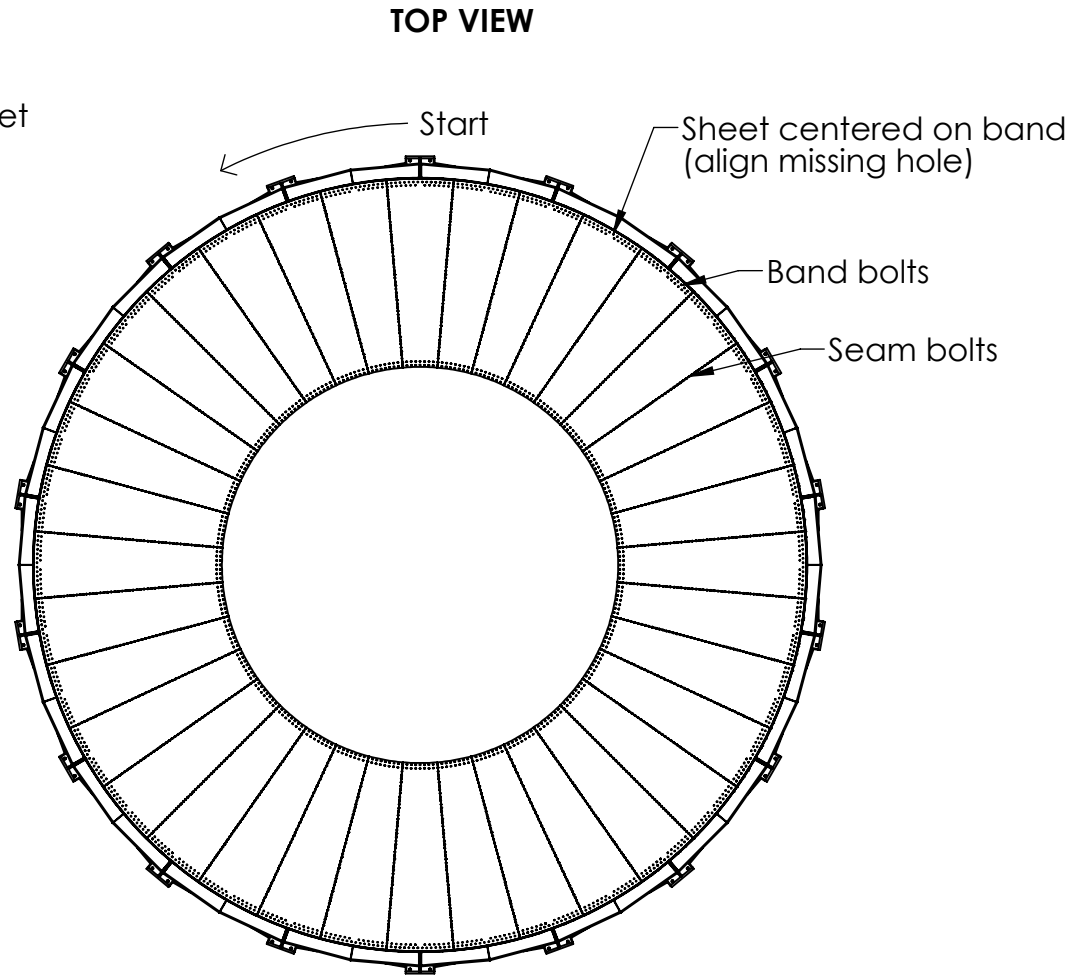
NOTE:

- 3/8 x 1" Fin Bolt and serrated flange nut
- Bolt head inside cone
- Leave all hardware loose until fully assembled

Top Ring



Top Sheet



Printed: 21/10/2014

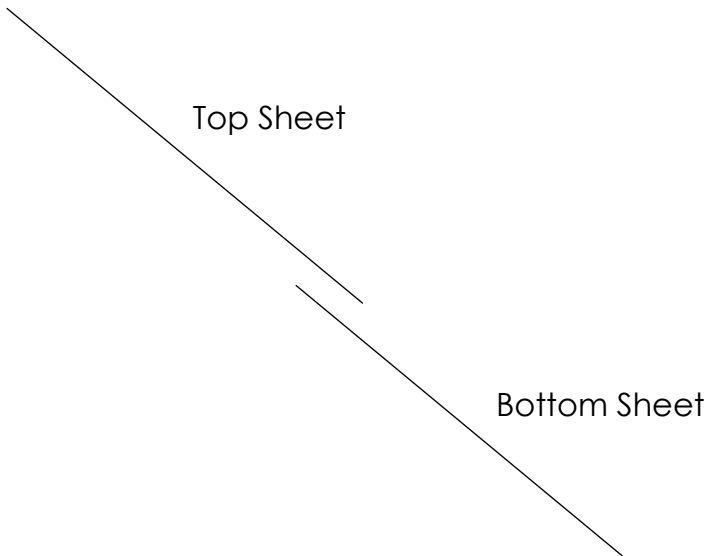
UNLESS OTHERWISE SPECIFIED:		NAME	DATE	BRIDGEVIEW	
DIMENSIONS ARE IN INCHES TOLERANCES: FRACTIONAL-1/16 ANGULAR: MACH ± BEND ± 1 TWO PLACE DECIMAL ±.01 THREE PLACE DECIMAL ±.005		DRAWN	JORGENSEN, Orran		
STOCK SIZE		CHECKED	TITLE: Hopper Cones		Bolt-Together Hopper Cone 27-40-Style 4, Seismic Design
MATERIAL		PROPRIETARY AND CONFIDENTIAL THE INFORMATION CONTAINED IN THIS DRAWING IS THE SOLE PROPERTY OF BRIDGEVIEW MANUFACTURING INC. ANY REPRODUCTION IN PART OR AS A WHOLE WITHOUT THE WRITTEN PERMISSION OF BRIDGEVIEW MANUFACTURING INC. IS PROHIBITED.		SIZE A	
		Comments: For Mainland Machinery, Abbotsford, BC		ID# : Dwg : HCB-27-40-X1-4	
				SCALE: 1:80	WT.: 19468.78 lb
				Page 4 of 6	

STEP 6: Install bottom pie sheets

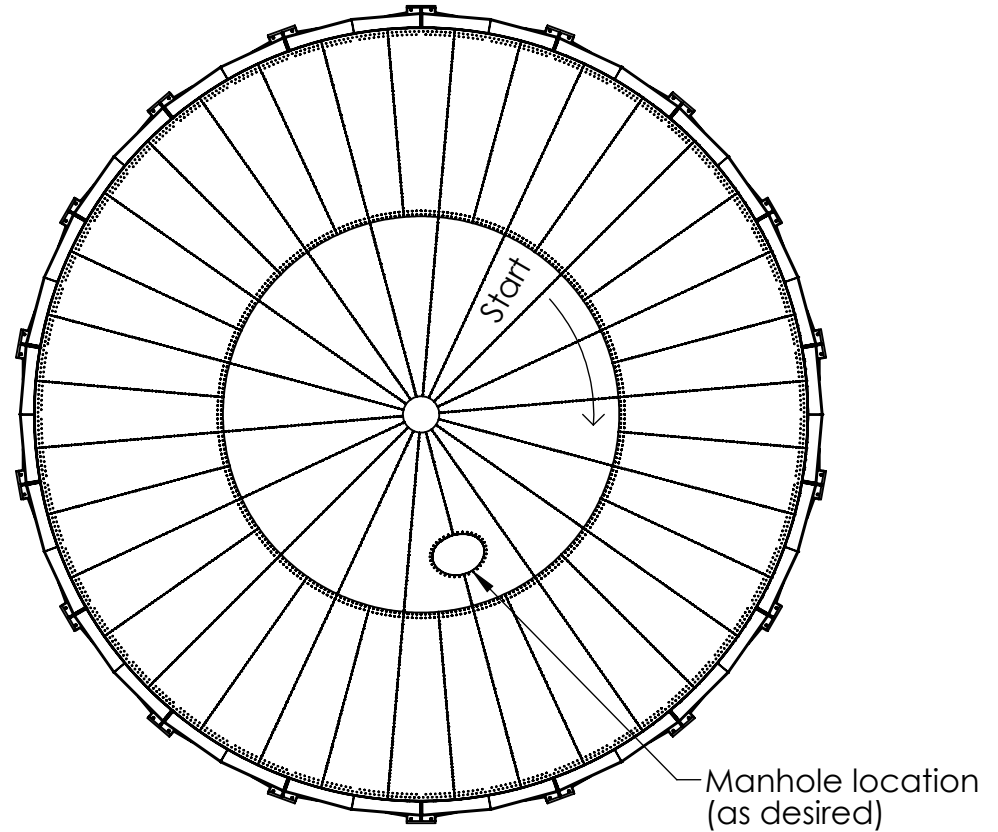
- Line up first sheet with the seams aligned with the top sheet
- These sheets should sit under the top sheets
- The bent edge should be on the counter-clockwise side
- Install top bolts
- Add next sheet in a clockwise direction
- Each sheet should overlap underneath the previous sheet
- Install top bolts
- Install seam bolts
- Continue for the rest of the sheets

NOTE:

- Install manhole in desired location for ease of access
- 3/8 x 1" Fin Bolt and serrated flange nut
- Bolt head inside cone
- Leave all hardware loose until fully assembled



TOP VIEW



Printed: 21/10/2014

UNLESS OTHERWISE SPECIFIED:		NAME	DATE	BRIDGEVIEW	
DIMENSIONS ARE IN INCHES TOLERANCES: FRACTIONAL-1/16 ANGULAR: MACH± BEND ±1 TWO PLACE DECIMAL ±.01 THREE PLACE DECIMAL ±.005		DRAWN	JORGENSON, Orran		
STOCK SIZE		CHECKED	PROPRIETARY AND CONFIDENTIAL THE INFORMATION CONTAINED IN THIS DRAWING IS THE SOLE PROPERTY OF BRIDGEVIEW MANUFACTURING INC. ANY REPRODUCTION IN PART OR AS A WHOLE WITHOUT THE WRITTEN PERMISSION OF BRIDGEVIEW MANUFACTURING INC. IS PROHIBITED.		TITLE: Hopper Cones Bolt-Together Hopper Cone 27-40-Style 4, Seismic Design
MATERIAL		Comments: For Mainland Machinery, Abbotsford, BC		SIZE A	ID# : Dwg : HCB-27-40-X1-4
				SCALE: 1:80	WT.: 20578.70 lb Page 5 of 6

STEP 7: Install manhole

- Install manhole flange to the hole in the bottom sheets
- The longer side of the flange should be to the inside
- Install the manhole cover to the inside
- Attach the chain to one of the flange bolts

STEP 8: Install bottom ring

- Install bottom ring to holes in the bottom sheet

NOTE: Use 3/8 x 1" Fin Bolts and serrated flange nuts for all joints (bolt heads inside cone)

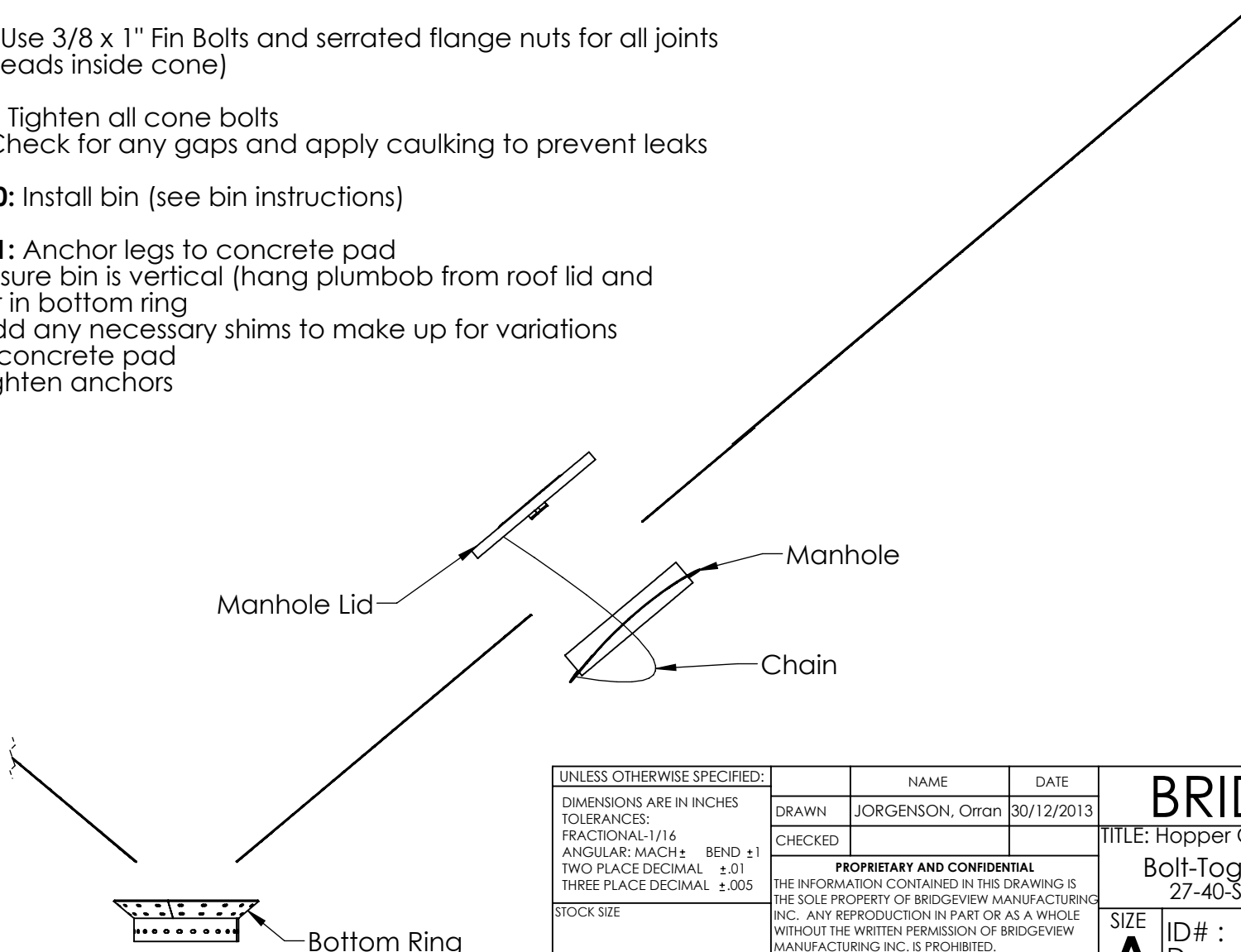
STEP 9: Tighten all cone bolts

- Check for any gaps and apply caulking to prevent leaks

STEP 10: Install bin (see bin instructions)

STEP 11: Anchor legs to concrete pad

- Ensure bin is vertical (hang plumbob from roof lid and center in bottom ring)
- Add any necessary shims to make up for variations in the concrete pad
- Tighten anchors



Printed: 21/10/2014

UNLESS OTHERWISE SPECIFIED:		NAME	DATE	BRIDGEVIEW	
DIMENSIONS ARE IN INCHES TOLERANCES: FRACTIONAL-1/16 ANGULAR: MACH± BEND ±1 TWO PLACE DECIMAL ±.01 THREE PLACE DECIMAL ±.005		DRAWN	JORGENSEN, Orran		
STOCK SIZE		CHECKED		TITLE: Hopper Cones	
MATERIAL		<p align="center">PROPRIETARY AND CONFIDENTIAL</p> <p>THE INFORMATION CONTAINED IN THIS DRAWING IS THE SOLE PROPERTY OF BRIDGEVIEW MANUFACTURING INC. ANY REPRODUCTION IN PART OR AS A WHOLE WITHOUT THE WRITTEN PERMISSION OF BRIDGEVIEW MANUFACTURING INC. IS PROHIBITED.</p>		<p align="center">Bolt-Together Hopper Cone 27-40-Style 4, Seismic Design</p>	
		Comments: For Mainland Machinery, Abbotsford, BC		<p>SIZE A</p>	<p>ID# : Dwg : HCB-27-40-X1-4</p>
				SCALE: 1:24	WT.: 64.56 lb
				Page 6 of 6	